

CORNER RECORD

Agency Index DPW # 19-101

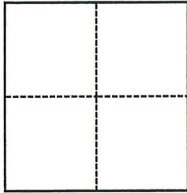
Document Number ADJ 048-232-57-1 ADJ

City of MILL VALLEY County of MARIN, California

Brief Legal Description STANDARD COUNTY MONUMENT SHOWN ON 20 RS 07.

CORNER TYPE

COORDINATES (Optional)



- Government Corner
- Meander
- Rancho
- Control
- Property
- Other

Date of Survey July 15, 2019

N. _____ E. _____

Elevation _____

Units Metric U.S. Survey Foot

Horizontal Datum _____

Zone _____ Epoch Date _____

Vertical Datum _____

Complies with Public Resources Code §§8801-8819

Complies with Public Resources Code §§8890-8902

PLS Act Ref.: 8765(d) 8771 8773 Other:

Corner/Monument: Left as found Established Rebuilt Pre-Construction

Found and tagged Reestablished Referenced Post-Construction

Narrative of corner identified and monument as found, set, reset, replaced, or removed:

See sheet #2 for description(s):

FOUND STANDARD COUNTY MONUMENT SHOWN ON 20 RS 07 NEAR LOT 32 AS SHOWN ON MAP 4 OS 76. SET FOUR REFERENCE TIES; RE-ESTABLISHED WITH COUNTY OF MARIN WELL MONUMENT PER UCS DWG #300. (SEE ATTACHED SKETCH) NO DETERMINATION WAS MADE AS TO THE VALIDITY OF THE MONUMENT SHOWN HERON OR ITS RELATION TO PROPERTY LINES IN THE AREA.

SURVEYOR'S STATEMENT

This Corner Record was prepared by me or under my direction in conformance with

the Professional Land Surveyors' Act on 06/20/22

Signed [Signature] P.L.S. or R.C.E. No. 9292



COUNTY SURVEYOR'S STATEMENT

This Corner Record was received 9/5/2019

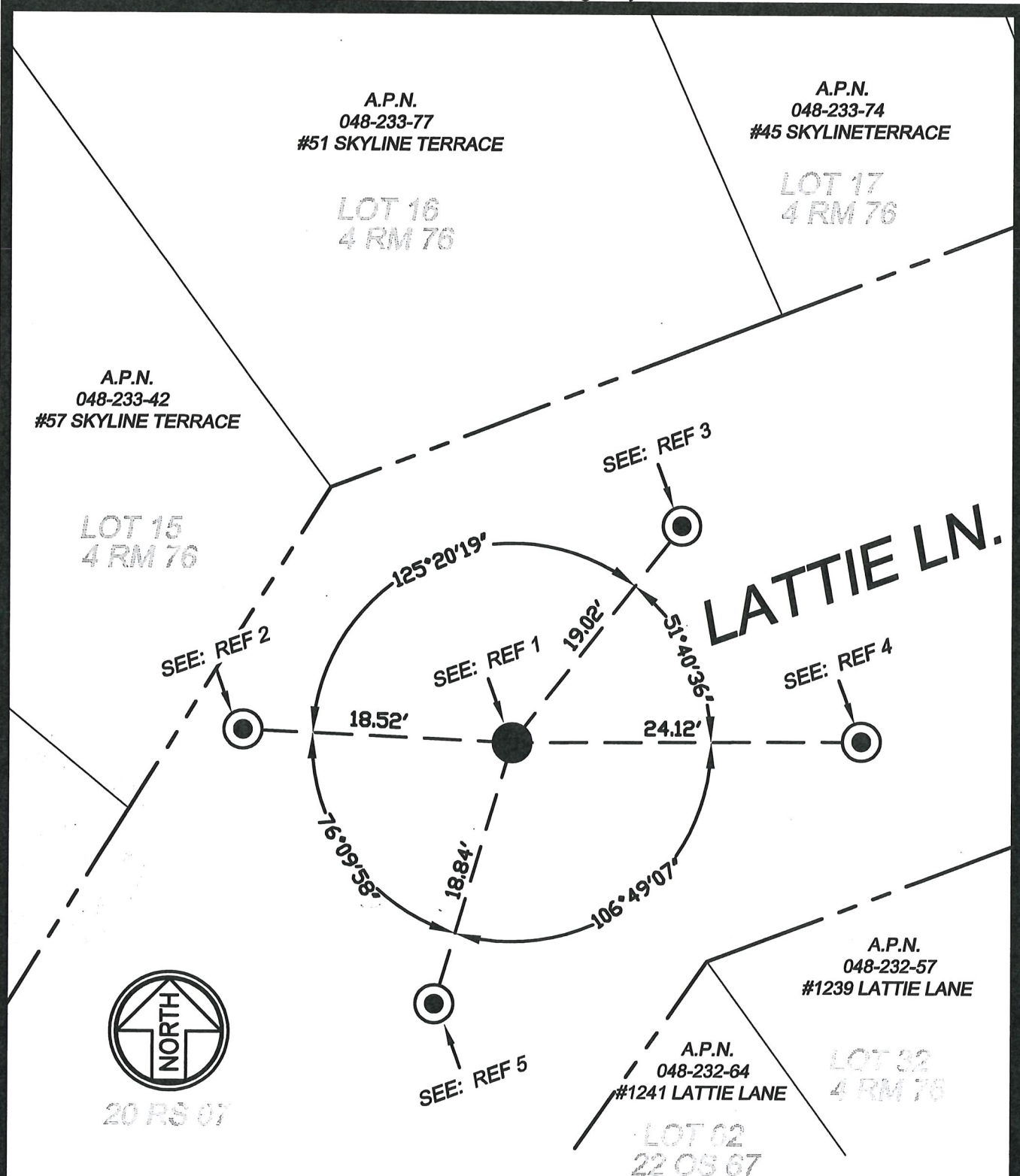
and examined and filed 6/20/22

Signed T.K. Park P.L.S. or R.C.E. No. 8176

Title County Surveyor

County Surveyor's Comment





- REF 1: FOUND 2" DISC IN STANDARD COUNTY MONUMENT WELL STAMPED "R.C.E. 8180" PER 20 RS 07 REPLACED WITH COUNTY STANDARD MONUMENT PER UNIFORM CONSTRUCTION STANDARDS DRAWING #300.
- REF 2: SET MAG NAIL AND WASHER STAMPED "MARIN COUNTY SURVEYOR " ON TOP OF ASPHALT BERM.
- REF 3: SET MAG NAIL AND WASHER STAMPED "MARIN COUNTY SURVEYOR " ON TOP OF ASPHALT BERM.
- REF 4: SET WOOD HUB WITH MAG NAIL AND WASHER STAMPED "MARIN COUNTY SURVEYOR " ON SHOULDER OF ROAD.
- REF 5: SET WOOD HUB WITH MAG NAIL AND WASHER STAMPED "MARIN COUNTY SURVEYOR " ON SHOULDER OF ROAD.

COUNTY OF MARIN
 DEPARTMENT OF PUBLIC WORKS
 SURVEY SECTION

SCALE: 1" = 10'

CORNER RECORD
 JOB No. 2019-28