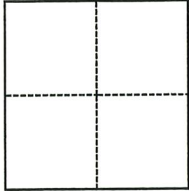


# CORNER RECORD

Agency Index APN DRW # 19-102  
 Document Number ADJ 048-223-06 ADJ

City of MILL VALLEY County of MARIN, California  
 Brief Legal Description 3/4" IRON PIN SHOWN ON 4 RM 76.

### CORNER TYPE



- Government Corner     Control  
 Meander                     Property  
 Rancho                             Other

Date of Survey July 15, 2019

### COORDINATES (Optional)

N. \_\_\_\_\_ E. \_\_\_\_\_  
 Elevation \_\_\_\_\_  
 Units     Metric             U.S. Survey Foot  
 Horizontal Datum \_\_\_\_\_  
 Zone \_\_\_\_\_ Epoch Date \_\_\_\_\_  
 Vertical Datum \_\_\_\_\_  
 Complies with Public Resources Code §§8801-8819  
 Complies with Public Resources Code §§8890-8902

PLS Act Ref.:     8765(d)             8771             8773             Other:  
 Corner/  
 Monument:     Left as found             Established             Rebuilt             Pre-Construction  
                    Found and tagged         Reestablished             Referenced             Post-Construction

Narrative of corner identified and monument as found, set, reset, replaced, or removed:

See sheet #2 for description(s):

FOUND 3/4" IRON PIN SHOWN ON 4 RM 76 NEAR LOT 5 . SET FOUR REFERENCE TIES; TO BE PRESERVED WITH COUNTY OF MARIN STANDARD MONUMENT WELL CASING AND LID. (SEE ATTACHED SKETCH) NO DETERMINATION WAS MADE AS TO THE VALIDITY OF THE MONUMENT SHOWN HERON OR ITS RELATION TO PROPERTY LINES IN THE AREA.

### SURVEYOR'S STATEMENT

This Corner Record was prepared by me or under my direction in conformance with the Professional Land Surveyors' Act on 06/20/22  
 Signed [Signature] P.L.S. or R.C.E. No. 9292

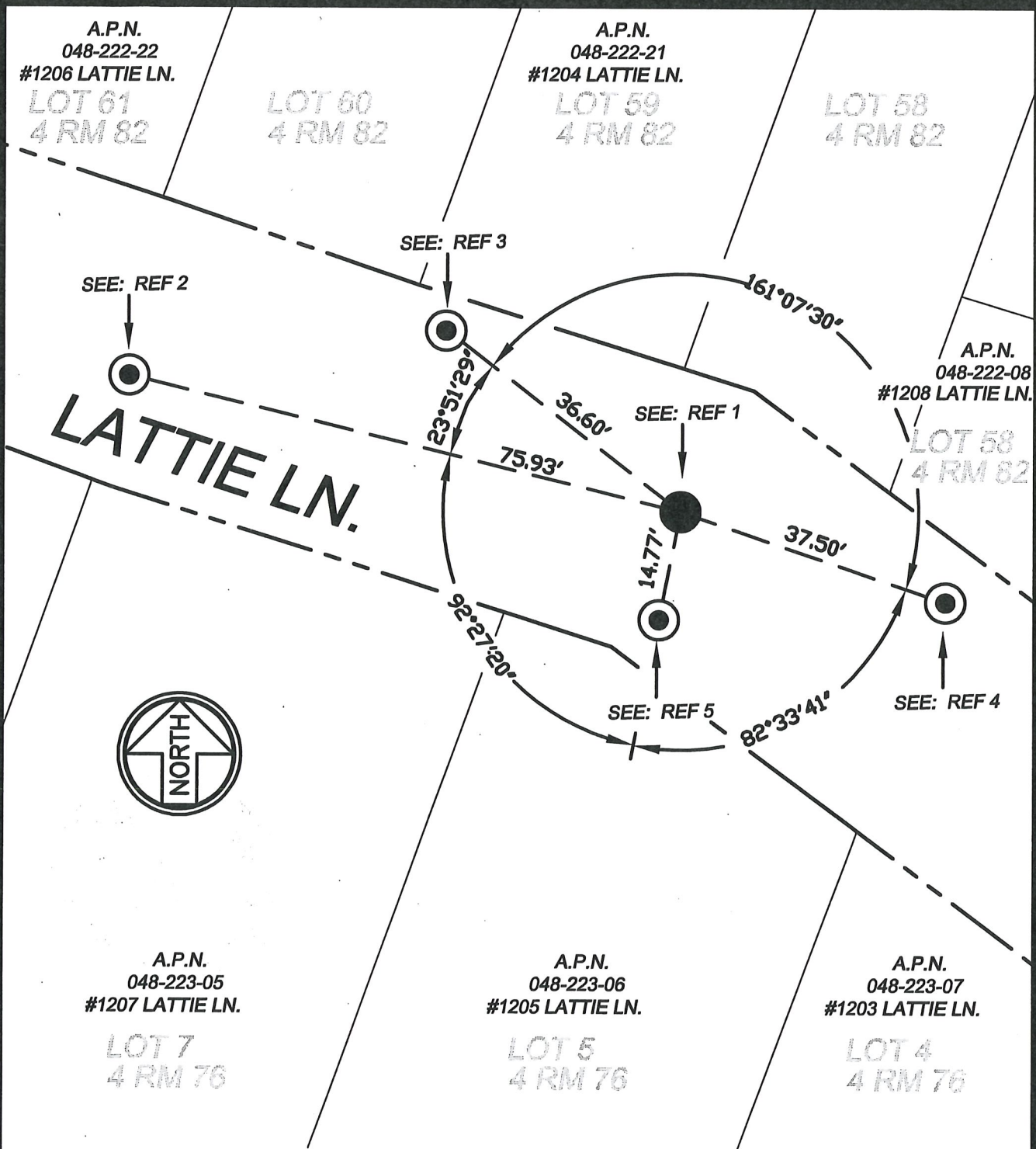


### COUNTY SURVEYOR'S STATEMENT

This Corner Record was received 9/5/2019  
 and examined and filed 6/20/22  
 Signed T.W. Park P.L.S. or R.C.E. No. 8176  
 Title County Surveyor



County Surveyor's Comment



- REF 1: FOUND  $\frac{3}{4}$ " IRON PIN 8" UNDER THE ASPHALT SURFACE PER 4 RM 76 PRESERVED WITH COUNTY STANDARD MONUMENT WELL CASING AND LID.
- REF 2: SET MAG NAIL AND WASHER STAMPED "MARIN COUNTY SURVEYOR " ON EDGE OF PAVEMENT.
- REF 2: SET MAG NAIL AND WASHER STAMPED "MARIN COUNTY SURVEYOR " ON TOP OF ASPHALT BERM.
- REF 2: SET MAG NAIL AND WASHER STAMPED "MARIN COUNTY SURVEYOR " ON TOP OF ASPHALT BERM.
- REF 5: SET NAIL AND BRASS TAG STAMPED "MARIN P.W. " ON TOP OF A WOOD STEP.

<b>COUNTY OF MARIN</b> DEPARTMENT OF PUBLIC WORKS SURVEY SECTION	<b>SCALE: 1"=20'</b>	JOB No. 2019-28 <b>CORNER RECORD</b>
--	----------------------	---