

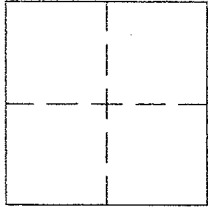
CORNER RECORD

Document Number APN 048-211-73

City of MILL VALLEY

County of MARIN, California

Legal Description N'LY LINE PARCEL 1, 4 PM 57



CORNER TYPE

Government Corner Control
Meander Property
Rancho Other
Date of Survey AUGUST 31, 2016

COORDINATES (Optional)

N. _____
E. _____
Zone _____ NAD27 NAD83
NAD83 Epoch _____
Elev. _____
Vert. Datum: NGVD29 NAVD88
Meas. Units: Metric Imperial

Corner - Left as found Found and tagged Established Reestablished Rebuilt

Identification and type of corner found: Evidence used to identify or procedure used to establish or reestablish the corner:

FOUND IRON PIPES AS SHOWN ON 2016 MAPS. 5

A description of the physical condition of the monument as found and as set or reset:

SET REBARS AND CAPS, AND HUB OFFSET LINE POINTS, PLS 5296, AS SHOWN ON REVERSE

SURVEYOR'S STATEMENT

This Corner record was prepared by me or under my direction in conformance with the Land Surveyor's Act on OCTOBER 14, 2016

Signed [Signature] P.L.S. or R.C.E. No. PLS 5296



COUNTY SURVEYOR'S STATEMENT

This Corner Record was received DECEMBER 2, 2016

and examined and filed JANUARY 24, 2017

Signed [Signature] P.L.S. or R.C.E. No. 8176

Title COUNTY SURVEYOR



County Surveyor's Comment _____

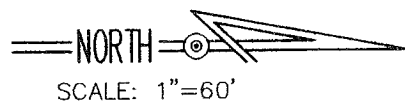
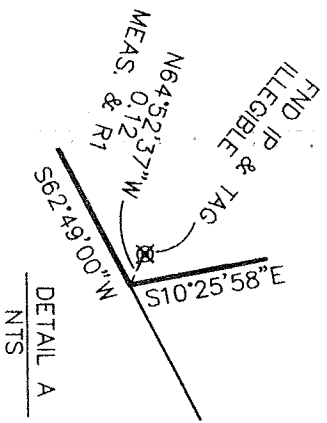
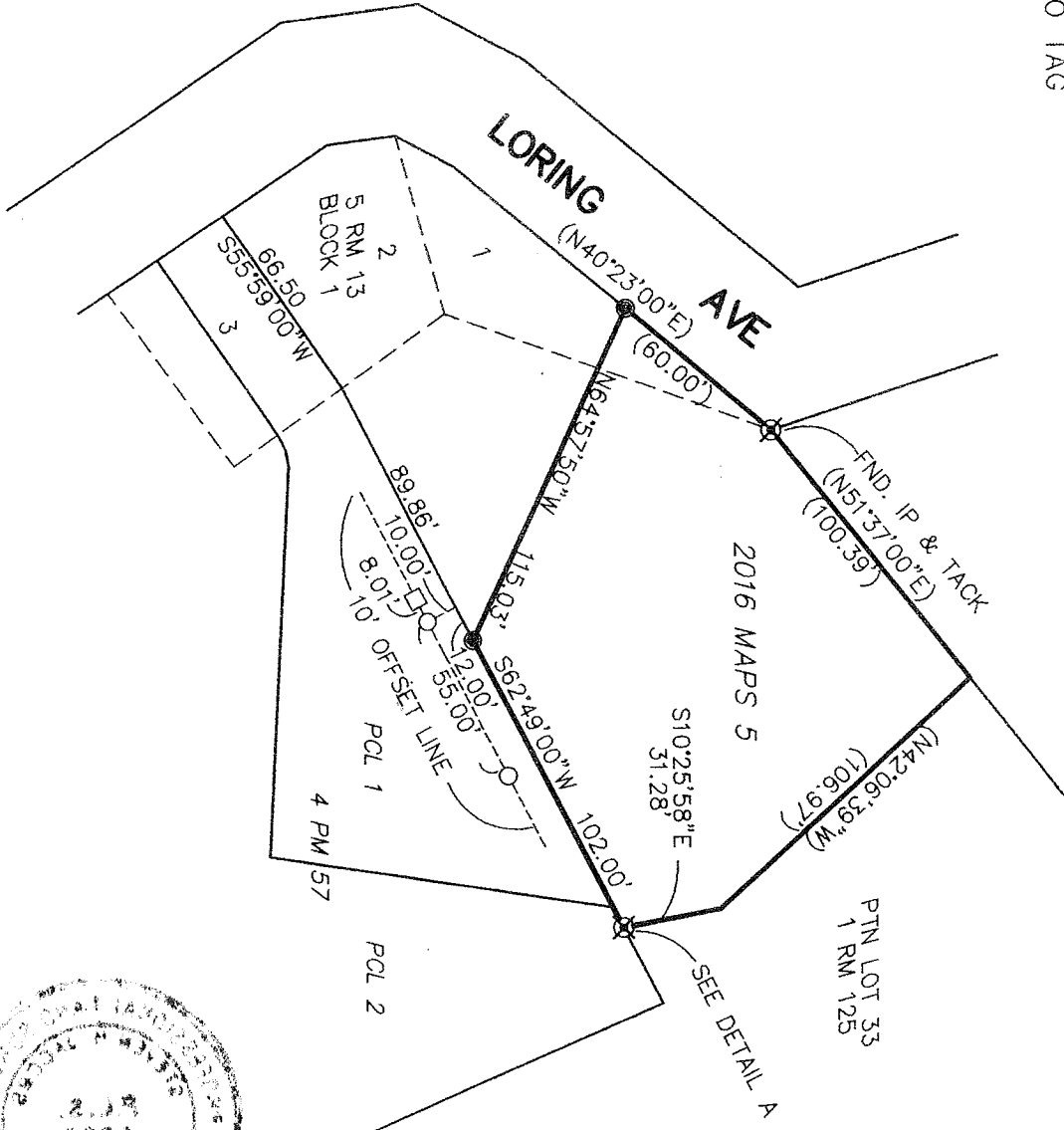


LEGEND

- FND 1/2" IP & TAG LS 7237 PER R1
- ⊗ FND 3/4" IP AS NOTED
- SET HUB & TAG PLS 5296
- SET REBAR & CAP PLS 5296
- NT NO TAG

MAP REFERENCES

R1 2016 MAPS 5
 BEARINGS AND DISTANCES
 SHOWN PER R1



PREPARED BY:
 JACOBS LAND SURVEYING
 P.O. BOX 7829
 COTATI, CA. 94931
 415 454-2235

JOB NO. 16-1428-M FB#77
 DWG FILE: 2016/september/riceCR