

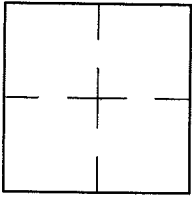
CORNER RECORD

Document Number A.P.# 048-132-10

City of MILL VALLEY

County of MARIN, California

Brief Legal Description LOT 10, BLOCK 1, 5 R.M. 54 AS SHOWN ON 2007 M. 90



CORNER TYPE COORDINATES (Optional)

Government Corner Control

Meander Property

Rancho Other

Date of Survey 07/10/13

N. _____
 E. _____
 Zone _____ NAD27 NAD83
 NAD83 Epoch _____
 Elev. _____
 Vert. Datum: NGVD29 NAVD88
 Meas. Units: Metric Imperial

Corner- Left as found Found and tagged Established Reestablished Rebuilt

Identification and type of corner found: Evidence used to identify or procedure used to establish or reestablish the corner:
REESTABLISHED LOT 10, BLOCK 1, 5 R.M. 54, AS SHOWN ON 2007 M. 90,
USING POINTS FOUND PER 2007 M. 90, AS SHOWN ON SHEET 2.

A description of the physical condition of the monument as found and as set or reset: SEE SHEET 2.

SURVEYOR'S STATEMENT

This Corner Record was prepared by me or under my direction in conformance with
 the Land Surveyor's Act on JULY 10, 2013

Signed Lawrence P. Doyle P.L.S. or R.C.E. No. P.L.S. 4694



COUNTY SURVEYOR'S STATEMENT

This Corner Record was received SEPTEMBER 24, 2013

and examined and filed NOVEMBER 12, 2013

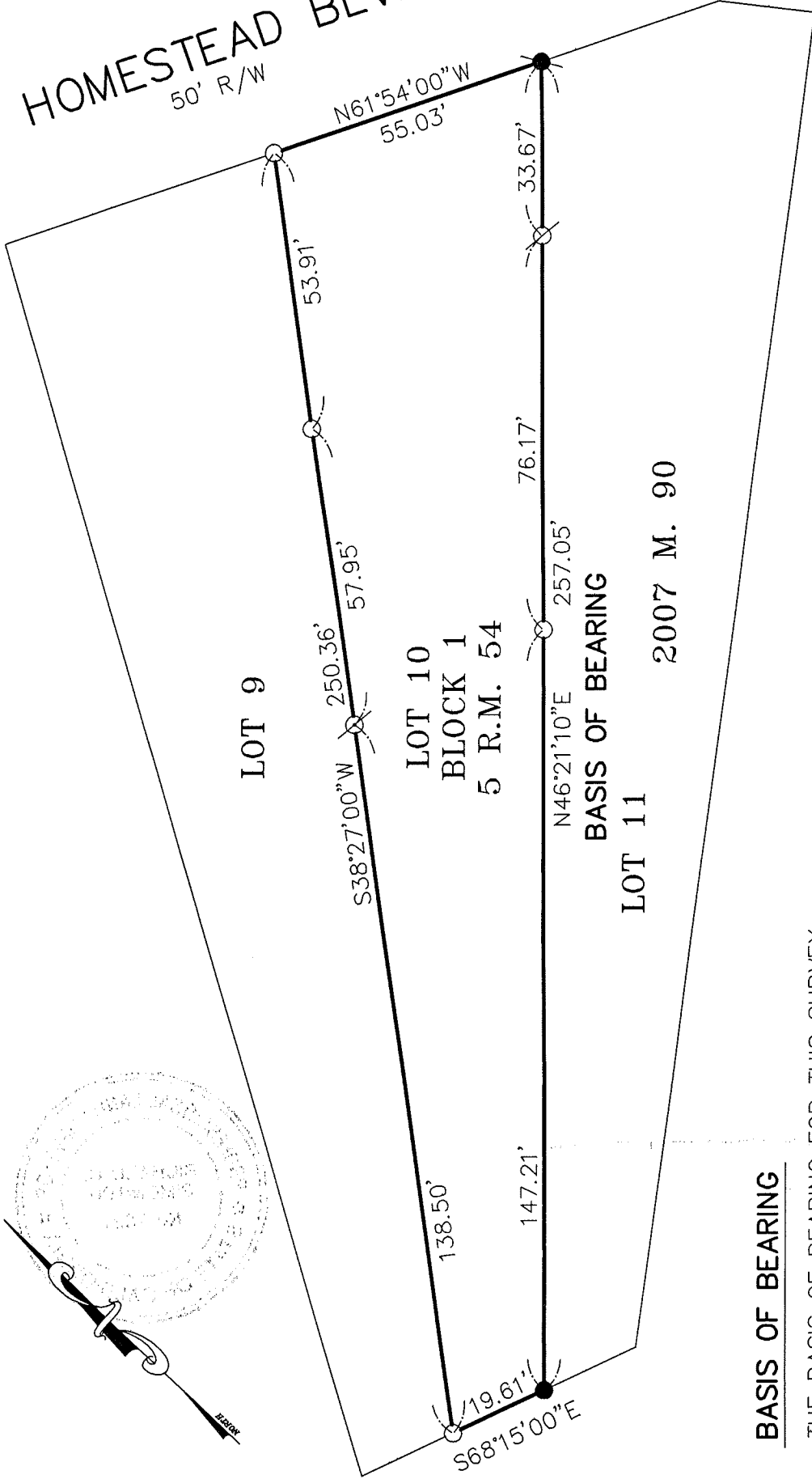
Signed Richard G. Simonitch P.L.S. or R.C.E. No. 7821



Title DEP. CO. SURV.

County Surveyor's Comment _____

HOMESTEAD BLVD.
50' R/W



LOT 9

LOT 10
BLOCK 1
5 R.M. 54

LOT 11

2007 M. 90

S38°27'00"W 250.36'
 57.95'
 53.91'
 N61°54'00"W 55.03'
 76.17'
 33.67'
 N46°21'10"E 257.05'
 147.21'
 19.61'
 S68°15'00"E

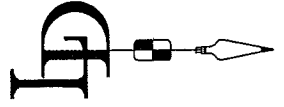
BASIS OF BEARING

BASIS OF BEARING

THE BASIS OF BEARING FOR THIS SURVEY IS N46°21'10"E BETWEEN FOUND POINTS PER 2007 M. 90

LEGEND

- FOUND OPEN 1/2" PIPE
- ⊗ FOUND NAIL & TAG, L.S. 4694 PER 2007 M. 90
- SET 3/4" PIPE AND PLUG L.S. 4694
- ∅ SET NAIL & TAG, L.S. 4694



CORNER RECORD
2007 M. 90

MILL VALLEY MARIN COUNTY CALIFORNIA

SCALE: 1" = 30'
DATE: 7/2013

LAWRENCE P. DOYLE

LAND SURVEYOR/CIVIL ENGINEER
100 HELENS LANE MILL VALLEY CA 94941 (415-388-9585)

DRAWING NO.
2394-CR

SHEET 1 OF 1