

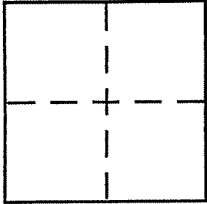
**CORNER RECORD**

Document Number APN 48-132-07

City of Near Mill Valley

County of Marin, California

Brief Legal Description Lot 7, Block 1, 5 RM 54, APN 48-132-07



**CORNER TYPE**

Government Corner  Control   
Meander  Property   
Rancho  Other   
Date of Survey \_\_\_\_\_

**COORDINATES (Optional)**

N. \_\_\_\_\_  
E. \_\_\_\_\_  
Zone \_\_\_\_\_ NAD27  NAD83   
NAD83 Epoch \_\_\_\_\_  
Elev. \_\_\_\_\_  
Vert. Datum: NGVD29  NAVD88   
Meas. Units: Metric  Imperial

Corner - Left as found  Found and tagged  Established  Reestablished  Rebuilt

Identification and type of corner found: Evidence used to identify or procedure used to establish or reestablish the corner:

See Back

A description of the physical condition of the monument as found and as set or reset:

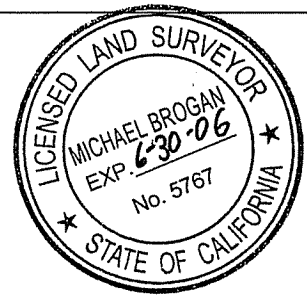
See Back

**SURVEYOR'S STATEMENT**

This Corner Record was prepared by me or under my direction in conformance with

the Land Surveyor's Act on January 8 2006

Signed Michael A. Brogan P.L.S or R.C.E. No. LS 5767



**COUNTY SURVEYOR'S STATEMENT**

This Corner Record was received JANUARY 11, 2006

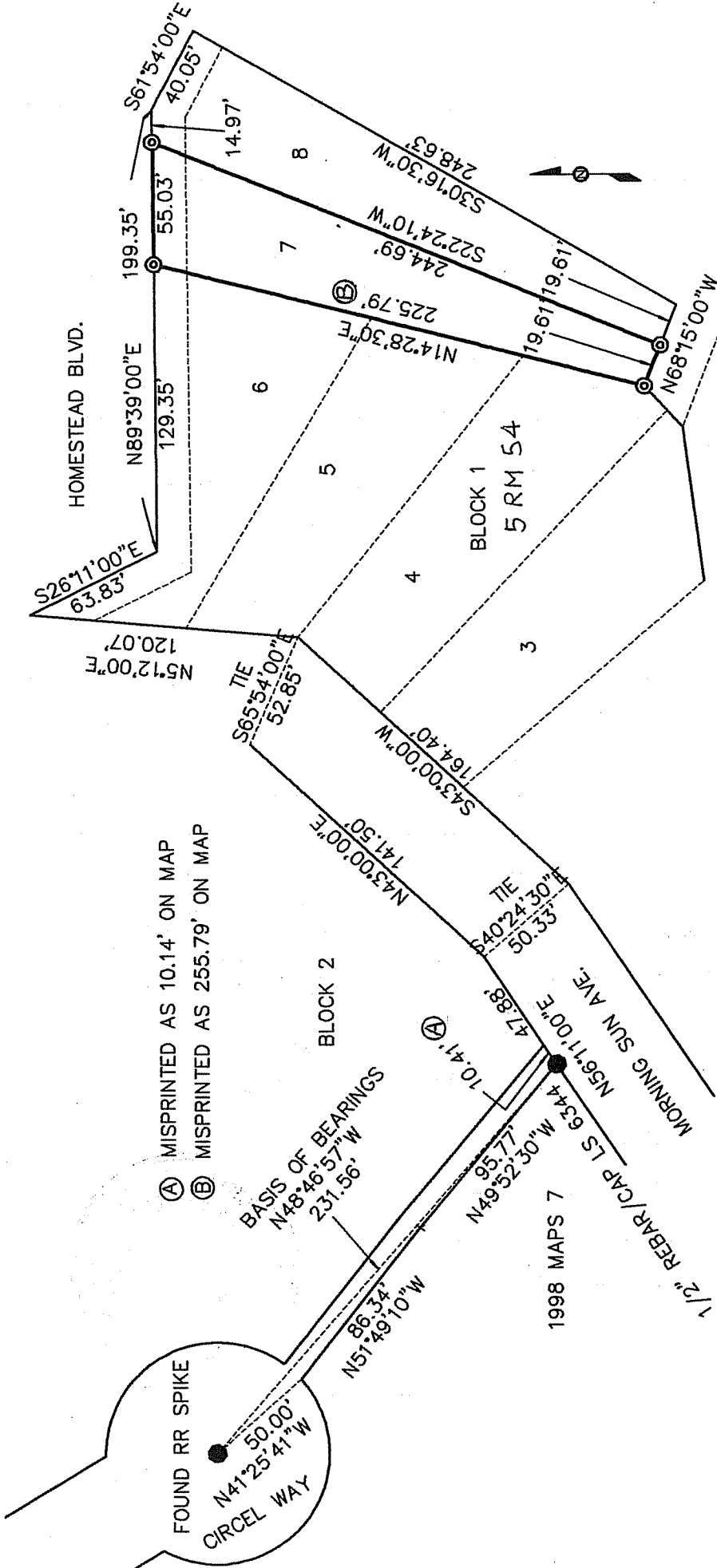
and examined and filed FEBRUARY 8, 2006

Signed [Signature] P.L.S or R.C.E. No. 7128

Title COUNTY SURVEYOR



County Surveyor's Comment \_\_\_\_\_



- (A) MISPRINTED AS 10.14' ON MAP
- (B) MISPRINTED AS 255.79' ON MAP

FOUND RR SPIKE  
 N41°25'41"W  
 50.00'  
 CIRCEL WAY

BASIS OF BEARINGS  
 N48°46'57"W  
 231.56'

BASIS OF BEARINGS: N48°46'57"W BETWEEN FOUND RAILROAD SPIKE AND REBAR/CAP LS 6344 PER 1998 M 7  
 231.56' CALCULATED AND MEASURED

ALL DIMENSIONS ARE IN FEET AND DECIMALS THEREOF  
 ● = FOUND MONUMENTATION PER 1998 MAPS 7, AS NOTED  
 ⊙ = SET 1/2" REBAR/CAP LS 5767

CORNER RECORD  
 LOT 7 BLOCK 1  
 5 RM 54  
 M. BROGAN AND ASSOCIATES, INC.  
 JOB NO. 5628 NOT TO SCALE  
 APN 48-132-07