

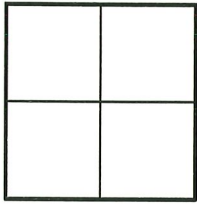
CORNER RECORD

Agency Index CR22-152
Document Number A.P.N. 048-123-48

Vicinity of the City of MILL VALLEY County of MARIN, California
Brief Legal Description LOT 1 Block 5 R.M. 13

CORNER TYPE

COORDINATES(Optional)



Government Corner Control
Meander Property
Rancho Other

Date of Survey 9/30/2022

N. _____ E. _____
Elevation _____

Units Metric U.S. Survey Foot

Horizontal Datum _____

Zone _____ Epoch Date _____

Vertical Datum _____

Complies with Public Resources Code §§8801-8819

Complies with Public Resources Code §§8890-8902

PLS Act Ref.: 8765(d) 8771 8773 Other:

Corner/Monument: Left as found Established Rebuilt Pre-Construction

Found and tagged Reestablished Referenced Post-Construction

Narrative of corner identified and monument as found, set, reset, replaced, or removed:
 See sheet #2 for description(s):

SURVEYOR'S STATEMENT

This Corner Record was prepared by me or under my direction in conformance with
the Professional Land Surveyors' Act on 9/30/2022

Signed Lawrence P. Doyle P.L.S. No. 4694



COUNTY SURVEYOR'S STATEMENT

This Corner Record was received December 20, 2022

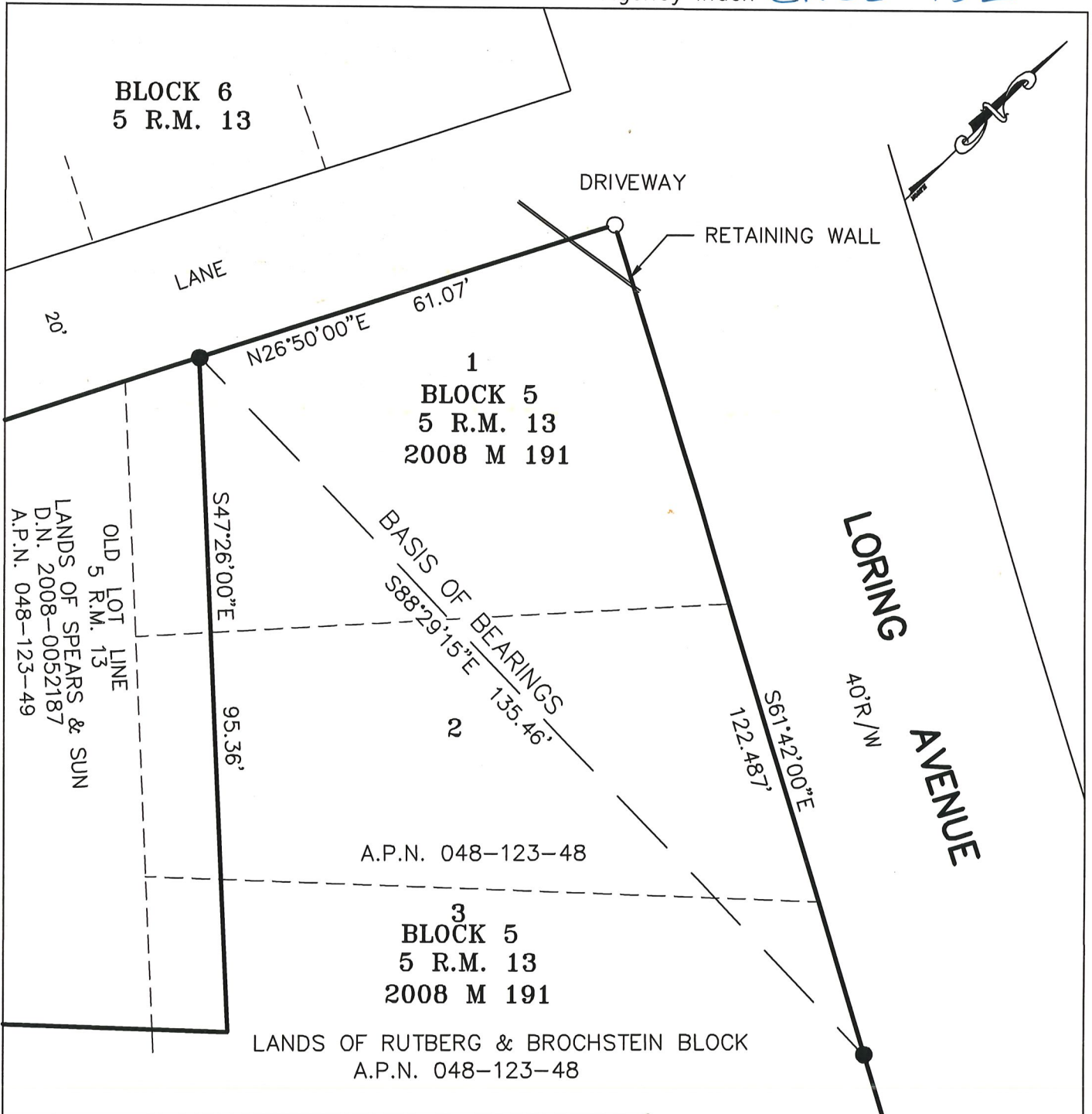
and examined and filed January 4, 2023

Signed T.W. Park P.L.S. or R.C.S. No. 8176

Title County Surveyor

County Surveyor's Comment





LEGEND

- FOUND 3/4" PIPE/PLUG P.L.S. 4694 PER 2008 M 191
- SET 3/4" PIPE/PLUG P.L.S. 4694

BASIS OF BEARINGS

BEARING OF N 25°51'05" W
 BETWEEN 3/4" PIPES & PLUGS
 STAMPED PLS 4694 PER 2008 M 191



CORNER RECORD	
LOT 1 BLOCK 5 5 R.M. 13	
MILL VALLEY MARIN COUNTY CALIFORNIA	
SCALE: 1"=20'	
DATE: 5/16/22	LAWRENCE P. DOYLE
LAND SURVEYOR/CIVIL ENGINEER	
100 HELENS LANE MILL VALLEY CA 94941 (415-388-9585)	
DRAWING NO. 3013-22	