

CORNER RECORD

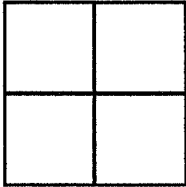
Agency Index 21-116

Document Number 048-101-23

City of unincorporated

County of MARIN, California

Brief Legal Description Parcel 2, 2021 PM 116



CORNER TYPE

- Government Corner Control
 Meander Property
 Rancho Other

Date of Survey September 17, 2021

COORDINATES (Optional)

N. _____ E. _____
 Elevation _____
 Units Metric U.S. Survey Foot
 Horizontal Datum _____
 Zone _____ Epoch Date _____
 Vertical Datum _____

- Complies with Public Resources Code §§8801-8819
 Complies with Public Resources Code §§8890-8902

- PLS Act Ref: 8765(d) 8771 8773 Other:
 Corner/Monument: Left as found Established Rebuilt Pre-Construction
 Found and tagged Reestablished Referenced Post-Construction

Narrative of corner identified and monument as found, set, reset, replaced, or removed:
 See sheet #2 for description (s):

SURVEYOR'S STATEMENT

This Corner Record was prepared by me or under my direction in conformance with
 the Professional Land Surveyors' Act on September 17, 2021

Signed [Signature] P.L.S. or R.C.E. No. 6649



COUNTY SURVEYOR'S STATEMENT

This Corner Record was received 10.6.21

and examined and filed NOV. 03, 2021

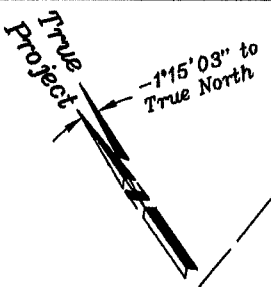
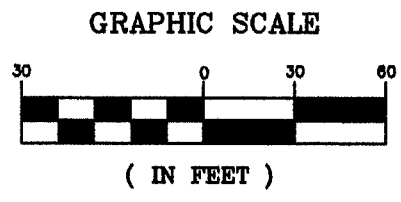
Signed [Signature] P.L.S. or R.C.E. No. 9292

Title DEPUTY

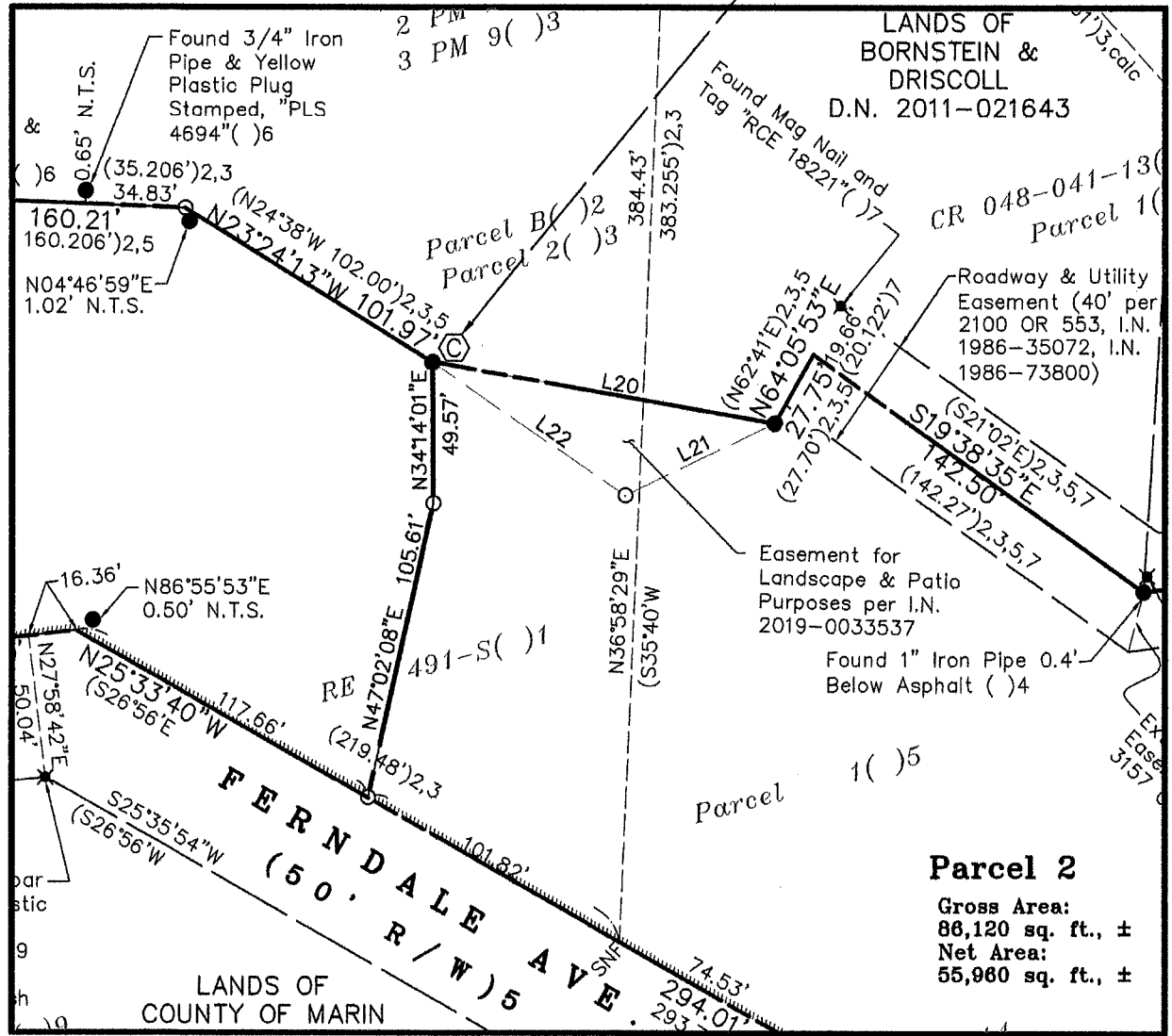
County Surveyor's Comment _____



All distances shown are in feet and decimals thereof



Found 3/4" iron pipe with yellow plastic plug stamped "PLS 3971". 2021 PM 116 incorrectly shows a pipe with nail and tag stamped "RCE 12510".



Parcel 2
 Gross Area: 86,120 sq. ft., ±
 Net Area: 55,960 sq. ft., ±



**CORNER RECORD
 LANDS OF SMITH
 FAMILY TRUST**

(Parcel 2, 2021 PM 116)
 MILL VALLEY MARIN COUNTY CALIFORNIA
 SCALE 1" = 60' SEPTEMBER 2021

L.A. Stevens & Associates, Inc.
 Professional Land Surveyors * (415) 382-7713
 7 Commercial Blvd., Suite 1 * Novato, CA 94949
 Job # 171809

Lawrence A. Stevens, PLS 6649
 Copyright © Lawrence A. Stevens 2021