

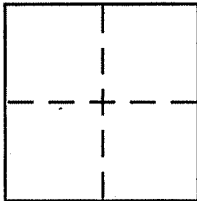
**CORNER RECORD**

Document Number APN 048-071-13

City of Mill Valley

County of Marin, California

Brief Legal Description Lands of Lowry & Parks per 2005 Maps 123



**CORNER TYPE**

Government Corner  Control   
Meander  Property   
Rancho  Other   
Date of Survey 10-22-10

**COORDINATES (Optional)**

N. \_\_\_\_\_  
E. \_\_\_\_\_  
Zone \_\_\_\_\_ NAD27  NAD83   
NAD83 Epoch \_\_\_\_\_  
Elev. \_\_\_\_\_  
Vert. Datum: NGVD29  NAVD88   
Meas. Units: Metric  Imperial

Corner - Left as found  Found and tagged  Established  Reestablished  Rebuilt

Identification and type of corner found: Evidence used to identify or procedure used to establish or reestablish the corner:

See page 2 of 2

A description of the physical condition of the monument as found and as set or reset:

See page 2 of 2

**SURVEYOR'S STATEMENT**

This Corner Record was prepared by me or under my direction in conformance with the Land Surveyor's Act on October 26 2010.

Signed [Signature] P.L.S. or R.C.E. No. 6784



**COUNTY SURVEYOR'S STATEMENT**

This Corner Record was received NOVEMBER 17, 2010

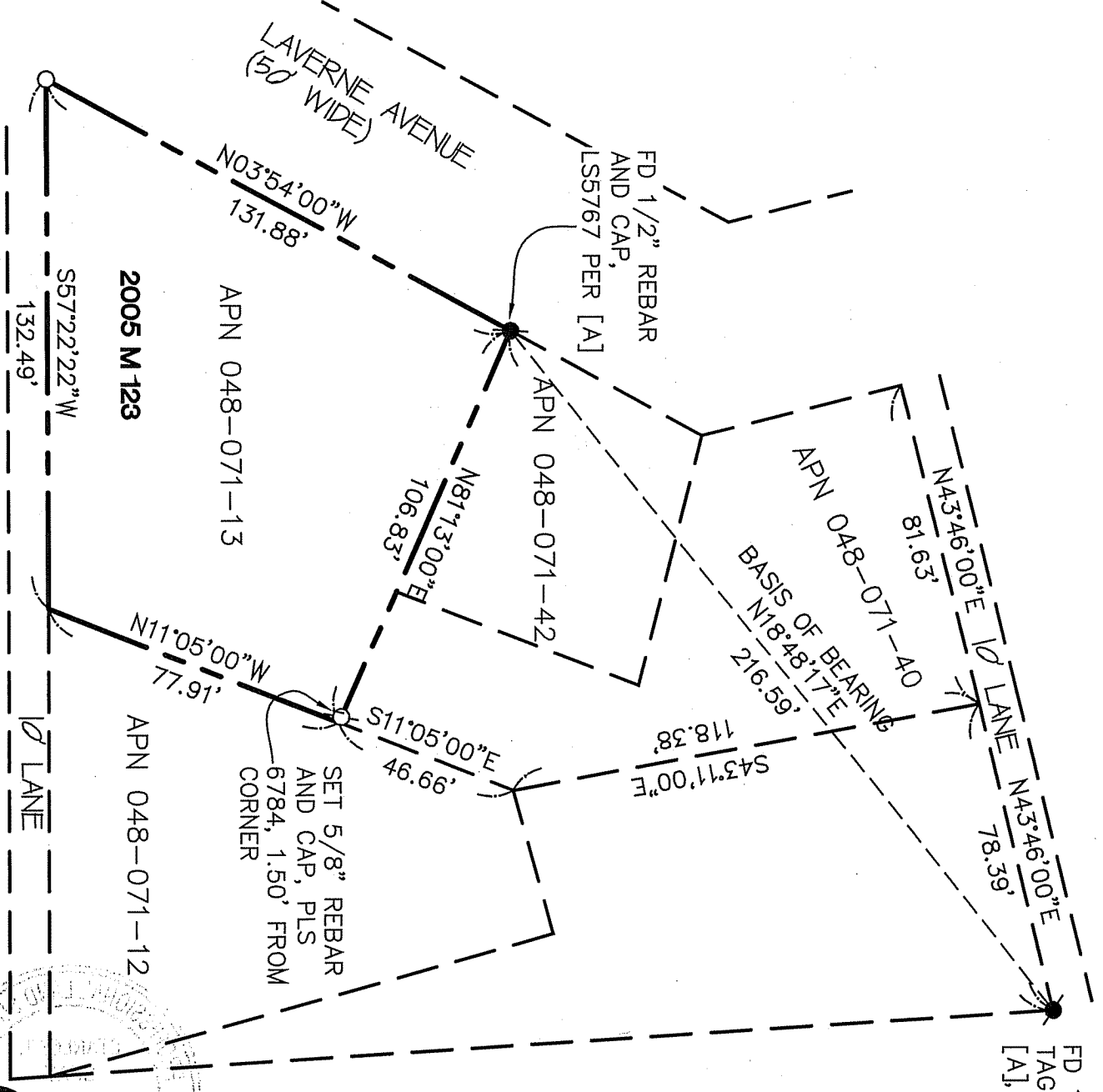
and examined and filed DECEMBER 28, 2010

Signed [Signature] P.L.S. or R.C.E. No. 7128

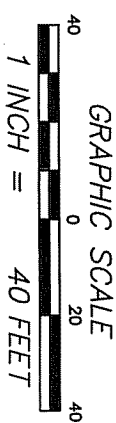
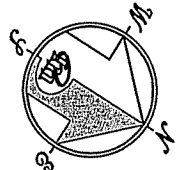
Title COUNTY SURVEYOR



County Surveyor's Comment \_\_\_\_\_



FD 1" PIPE AND TAG, LS2135 PER [A], DOWN 0.45'



**REFERENCE**

RECORD OF SURVEY, LANDS OF LOWRY AND PARKO FILED FOR RECORD MAY 9, 2005 IN BOOK 2005 OF MAPS, AT PAGE 123, MARIN COUNTY RECORDS. [A]

**LEGEND**

- FOUND MONUMENT AS NOTED
- SET 5/8" REBAR WITH CAP, PLS 6784, AS NOTED
- SET 1-1/2" WASHER AND MAG NAIL, STAMPED PLS 6784

NOTE  
RECORD=MEASURED

**CORNER RECORD**



**MERIDIAN SURVEYING, INC.**  
 777 GRAND AVENUE, SUITE 202  
 SAN RAFAEL, CA 94901  
 (415) 466-6450

1812 UNION STREET  
 SAN FRANCISCO, CA 94123  
 (415) 440-4131  
 info@meridiansurvey.com