

# CORNER RECORD

Agency Index

Document Number

DPW# 18-072  
APN 048-061-46 (ADJ)

Town of UNINCORPORATED

County of MARIN, California

Brief Legal Description

THE LANDS OF DOUGLASS & OLNEY AS SHOWN UPON THE RECORD OF SURVEY FILED FOR RECORD JULY 24, 2007 IN BOOK 2007 OF MAPS AT PAGE 137 (2007-MAPS-137), MARIN COUNTY RECORDS.



### CORNER TYPE

Government Corner  Control  
Meander  Property  
Rancho  Other

Date of Survey 11/13/2018

### COORDINATES (Optional)

N. \_\_\_\_\_ E. \_\_\_\_\_

Elevation \_\_\_\_\_

Units Metric  U.S. Survey Foot

Horizontal Datum \_\_\_\_\_

Zone \_\_\_\_\_ Epoch Date \_\_\_\_\_

Vertical Datum \_\_\_\_\_

Complies with Public Resources Code §§8801-8819

Complies with Public Resources Code §§8890-8902

PLS Act Ref:  8765(d)  8771  8773  Other:

Corner/Monument:  Left as found  Established  Rebuilt  Pre-Construction

Found and tagged  Reestablished  Referenced  Post-Construction

Narrative of corner identified and monument as found, set, reset, replaced, or removed:

See sheet #2 for description (s):

FOUND MONUMENT NEAR THE MOST EASTERLY CORNER OF THE LANDS OF DOUGLASS & OLNEY THAT COULD BE DAMAGED OR DESTROYED BY A PROPOSED GAS LINE CONSTRUCTION PROJECT. MONUMENT WAS REFERENCED AS SHOWN ON PAGE 2 OF 2.

THE PURPOSE OF THIS CORNER RECORD IS TO PRESERVE THE LOCATION OF A FOUND MONUMENT PRIOR TO TO CONSTRUCTION. NO ATTEMPT WAS OR WILL BE MADE TO DETERMINE THE RELATIONSHIP BETWEEN THE FOUND MONUMENT AND ANY BOUNDARY LINES, ROAD RIGHT-OF-WAY LINES, CENTERLINES OR OTHER MONUMENTS.

### SURVEYOR'S STATEMENT

This Corner Record was prepared by me or under my direction in conformance with the Professional Land Surveyors' Act on JANUARY 28, 2019

Signed [Signature] P.L.S. or R.C.E. No. 8965



### COUNTY SURVEYOR'S STATEMENT

This Corner Record was received NOVEMBER 20, 2018

and examined and filed JAN. 31, 2019

Signed [Signature] P.L.S. or R.C.E. No. 9292

Title DEPUTY C.S.



County Surveyor's Comment \_\_\_\_\_

- FOUND MAG NAIL AND WASHER STAMPED PLS 4694
- FOUND 3/4" IRON PIPE WITH PLASTIC PLUG AND TACK PLS 4694
- ▽ FOUND MAG NAIL AND STAMPED WASHER DOYLE T.P. PLS 4694
- ⊙ SET MAG NAIL AND SHINER ON TOP OF AC DIKE OR NEAR EDGE OF AC PAVEMENT
- ( ) RECORD INFORMATION FROM RECORD OF SURVEY 2007-MAPS-137

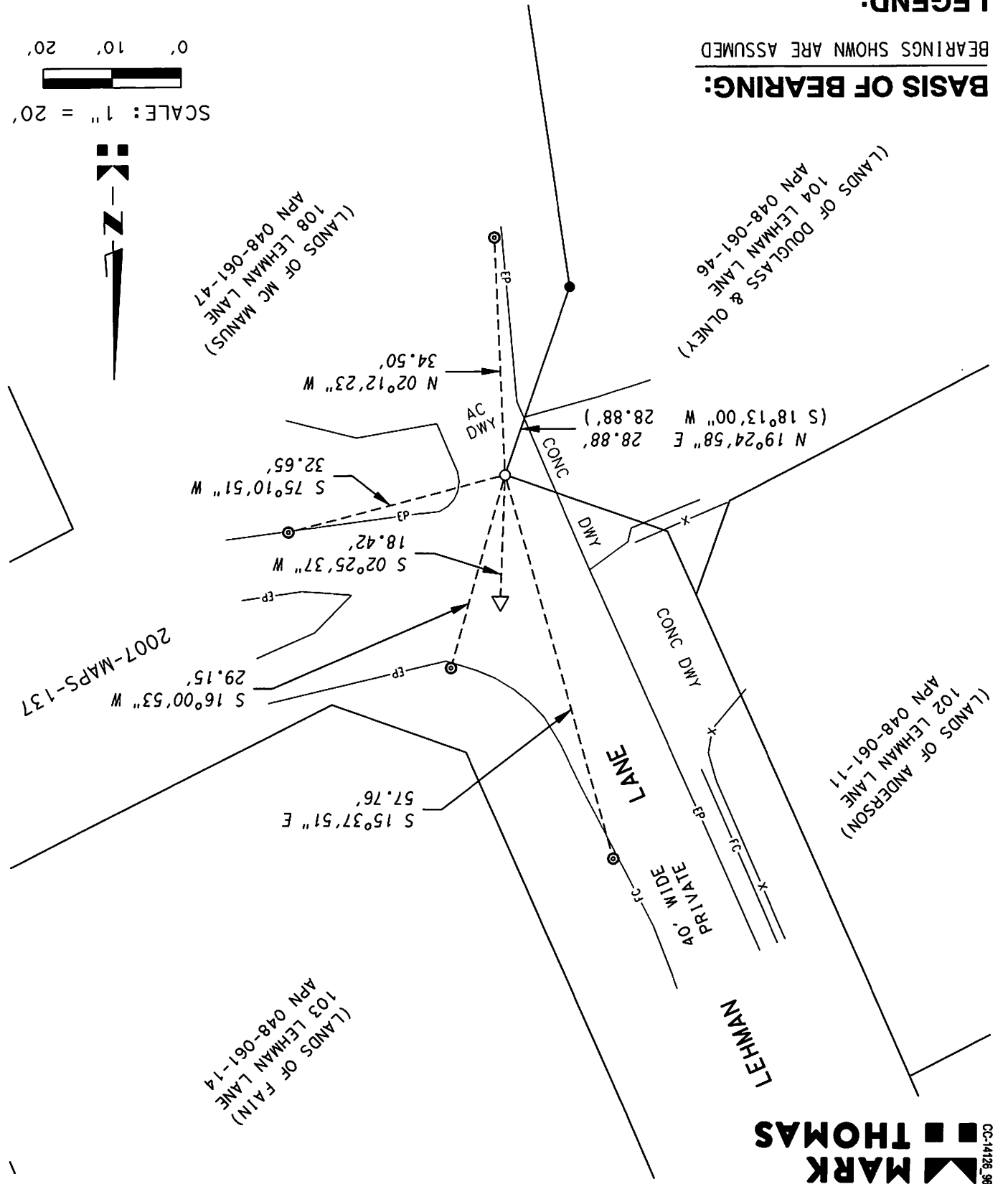
**LEGEND:**

BEARINGS SHOWN ARE ASSUMED

**BASIS OF BEARING:**

SCALE: 1" = 20'

0' 10' 20'



CC-14128\_36  
**MARK THOMAS**