

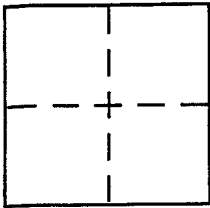
CORNER RECORD

Document Number APN 48-061-41

City of Mill Valley

County of MARIN, California

Brief Legal Description #100 Laverne Ave- APN 48-061-41



CORNER TYPE

Government Corner Control
Meander Property
Rancho Other
Date of Survey _____

COORDINATES (Optional)

N. _____
E. _____
Zone _____ NAD27 NAD83
NAD83 Epoch _____
Elev. _____
Vert. Datum: NGVD29 NAVD88
Meas. Units: Metric Imperial

Corner - Left as found Found and tagged Established Reestablished Rebuilt

Identification and type of corner found: Evidence used to identify or procedure used to establish or reestablish the corner:

Set SW'ly corner of APN 48-061-41, as shown
on 36 O.S. 53
See Back

A description of the physical condition of the monument as found and as set or reset:

See Back

SURVEYOR'S STATEMENT

This Corner Record was prepared by me or under my direction in conformance with

the Land Surveyor's Act on November 7 2005

Signed Michael A. Brogan P.L.S or R.C.E. No. LS 5767



COUNTY SURVEYOR'S STATEMENT

This Corner Record was received NOVEMBER 8, 2005

and examined and filed NOVEMBER 8, 2005

Signed [Signature] P.L.S or R.C.E. No. 7128

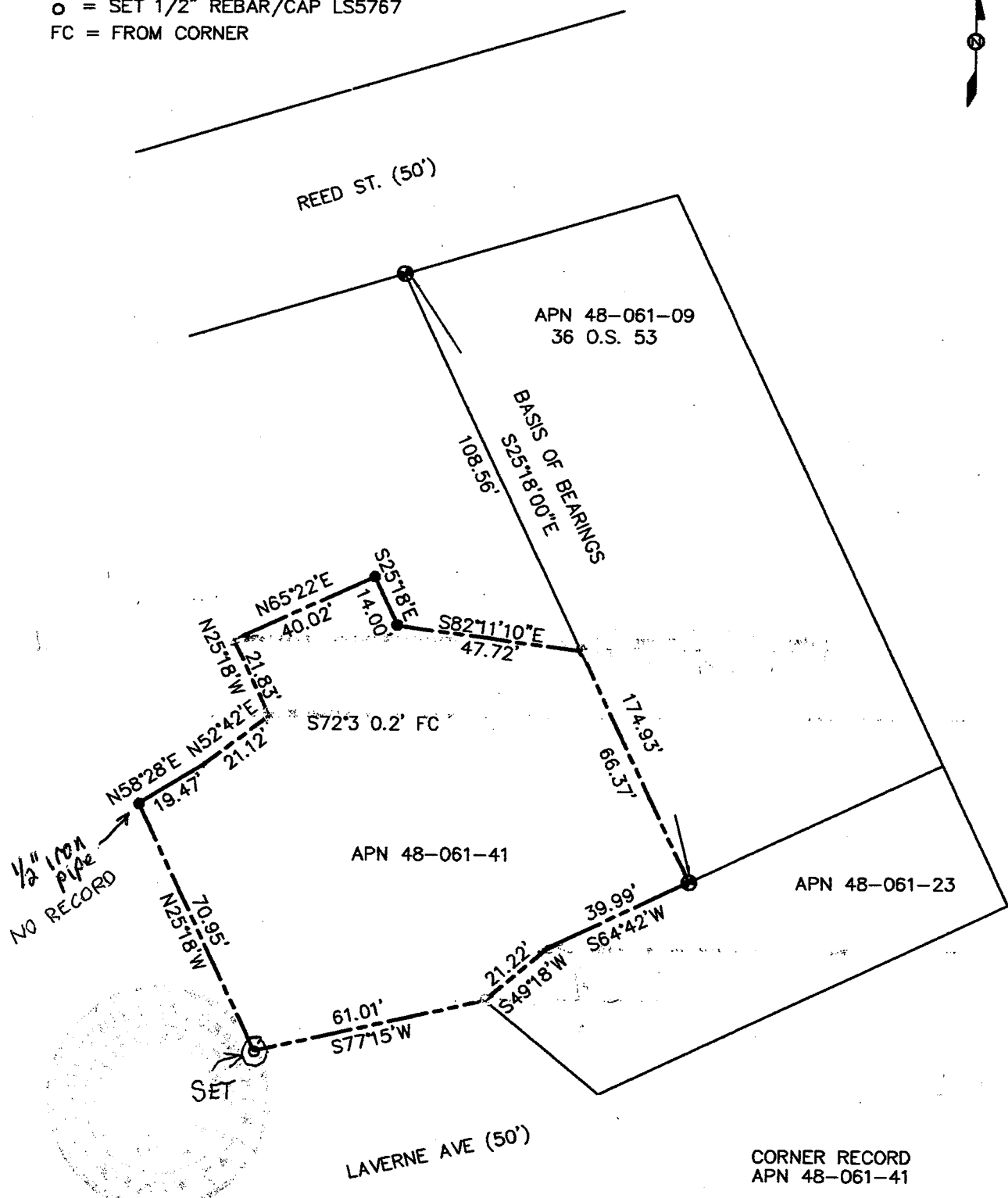
Title COUNTY SURVEYOR



County Surveyor's Comment _____

DIMENSIONS ARE IN FEET AND DECIMALS THEREOF

- = FOUND 1/2" REBAR LS 5767 36 O.S. 53
- = FOUND OLD 1/2" REBAR, NO RECORD
- = SET 1/2" REBAR/CAP LS5767
- FC = FROM CORNER



CORNER RECORD
APN 48-061-41

M. BROGAN AND ASSOCIATES, INC.
100 LABREA WAY
SAN RAFAEL CA 94903
JOB NO. 5629 2005
NOT TO SCALE