

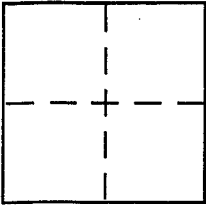
CORNER RECORD

Document Number _____

City of MILL VALLEY

County of MARIN, California

Brief Legal Description APN 048-041-07



CORNER TYPE

Government Corner Control
Meander Property
Rancho Other
Date of Survey 6/21/04

COORDINATES (Optional)

N. _____
E. _____
Zone _____ NAD27 NAD83
NAD83 Epoch _____
Elev. _____
Vert. Datum: NGVD29 NAVD88
Meas. Units: Metric Imperial

Corner - Left as found Found and tagged Established Reestablished Rebuilt

Identification and type of corner found: Evidence used to identify or procedure used to establish or reestablish the corner:

FND. REBAR S AS SHOWN ON B OS 55 AND ON REVERSE.

A description of the physical condition of the monument as found and as set or reset: SET 2"x2" REDWOOD

HUB AND 3/4" I.P. TAGGED P.L.S. 5296 IN RECORD
POSITIONS AS SHOWN ON REVERSE.

SURVEYOR'S STATEMENT

This Corner Record was prepared by me or under my direction in conformance with

the Land Surveyor's Act on JUNE 23, 2004

Signed [Signature] P.L.S or R.C.E. No. PLS 5296



COUNTY SURVEYOR'S STATEMENT

This Corner Record was received JULY 28, 2004

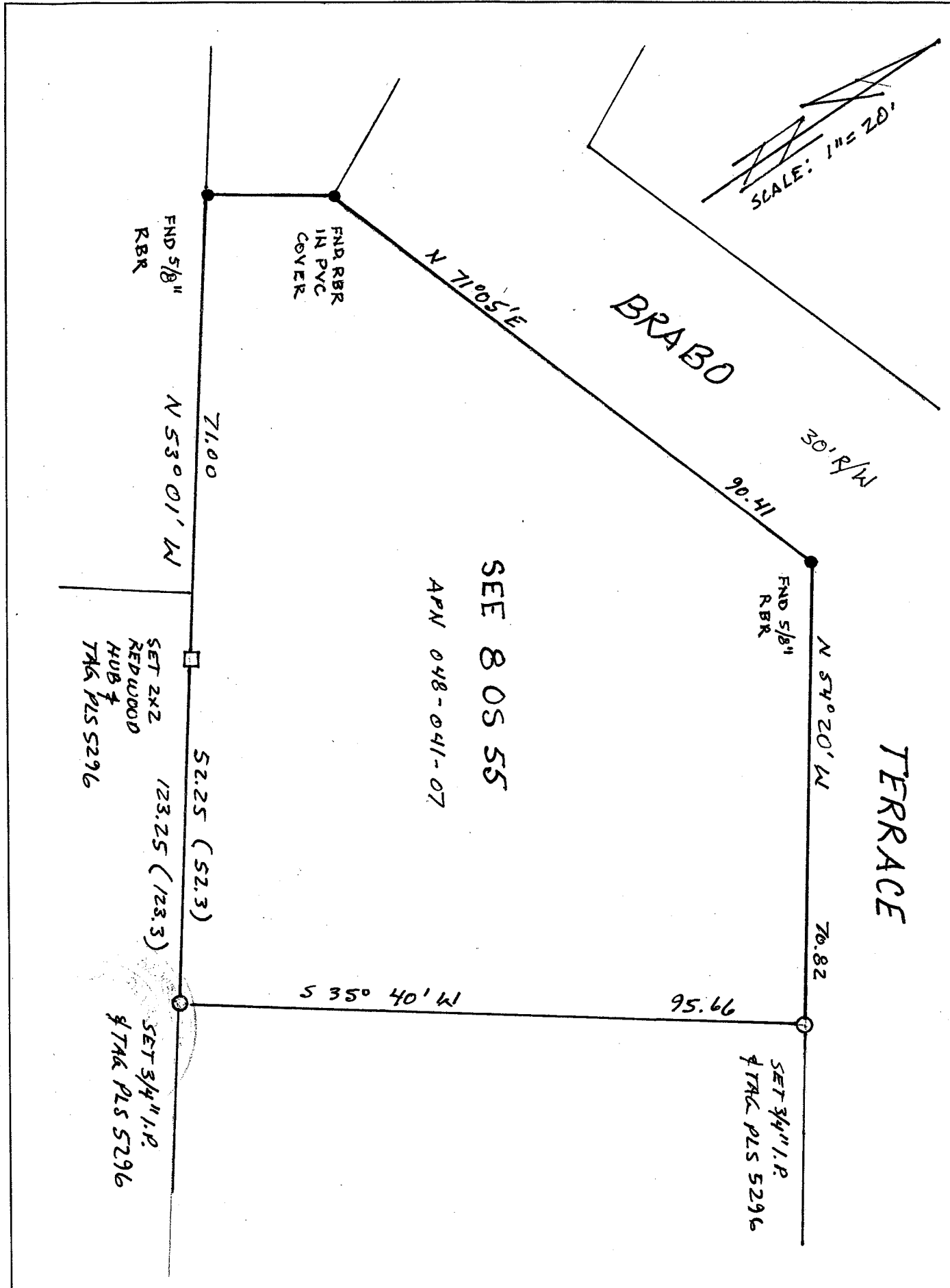
and examined and filed AUGUST 26, 2004

Signed [Signature] P.L.S or R.C.E. No. 7128

Title COUNTY SURVEYOR



County Surveyor's Comment _____



SCALE: 1" = 20'

BRABO

TERRACE

SEE 8 05 55

APN 048-041-07

FND 5/8" RBR

FND RBR IN PVC COVER

FND 5/8" RBR

SET 2X2 REDWOOD HUB & TAG PLS 5296

123.25 (123.3)

SET 3/4" I.P. & TAG PLS 5296

SET 3/4" I.P. & TAG PLS 5296