

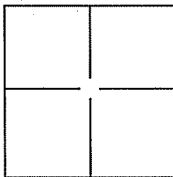
CORNER RECORD

Document Number A.P.N. 048-041-13 & 25

City of Mill Valley

County of Marin, California

Brief Legal Description Portion of Parcel 1, 234 Reed Street, 3 PM 9.



CORNER TYPE

Government Corner Control
 Meander Property
 Rancho Other

Date of Survey 30 September 2011

COORDINATES(Optional)

N. _____
 E. _____
 Zone _____ NAD27 NAD83
 NAD83 Epoch _____
 Elev. _____
 Vert. Datum: NGVD29 NADV88
 Meas. Units: Metric Imperial

Corner - Left as found Found and tagged Established Reestablished Rebuilt

Identification and type of corner found: Evidence used to identify or procedure used to establish or reestablish the corner:
Found 1/2" Rebar, No Tag, and Found 5/8" Rebar, No Tag, per 8 OS 55.

A description of the physical condition of the monument as found and as set or reset: _____
Set one at most northerly corner, Set one at northeasterly corner, Set one on southwesterly line and Set one at most southerly corner of APN 048-041-25 (4), See Exhibit "A".

SURVEYOR'S STATEMENT

This Corner Record was prepared by me or under my direction in conformance with the Land Surveyor's Act on OCTOBER 31, 2011.

Signed [Signature] P.L.S. or R.C.E. No.: 18221



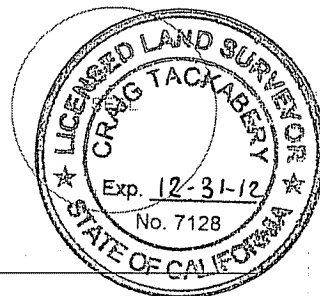
COUNTY SURVEYOR'S STATEMENT

This Corner Record was received OCTOBER 17, 2011 and examined and filed NOVEMBER 1, 2011.

Signed [Signature] P.L.S. or R.C.E. No.: 7128

Title COUNTY SURVEYOR

County Surveyor's Comment _____



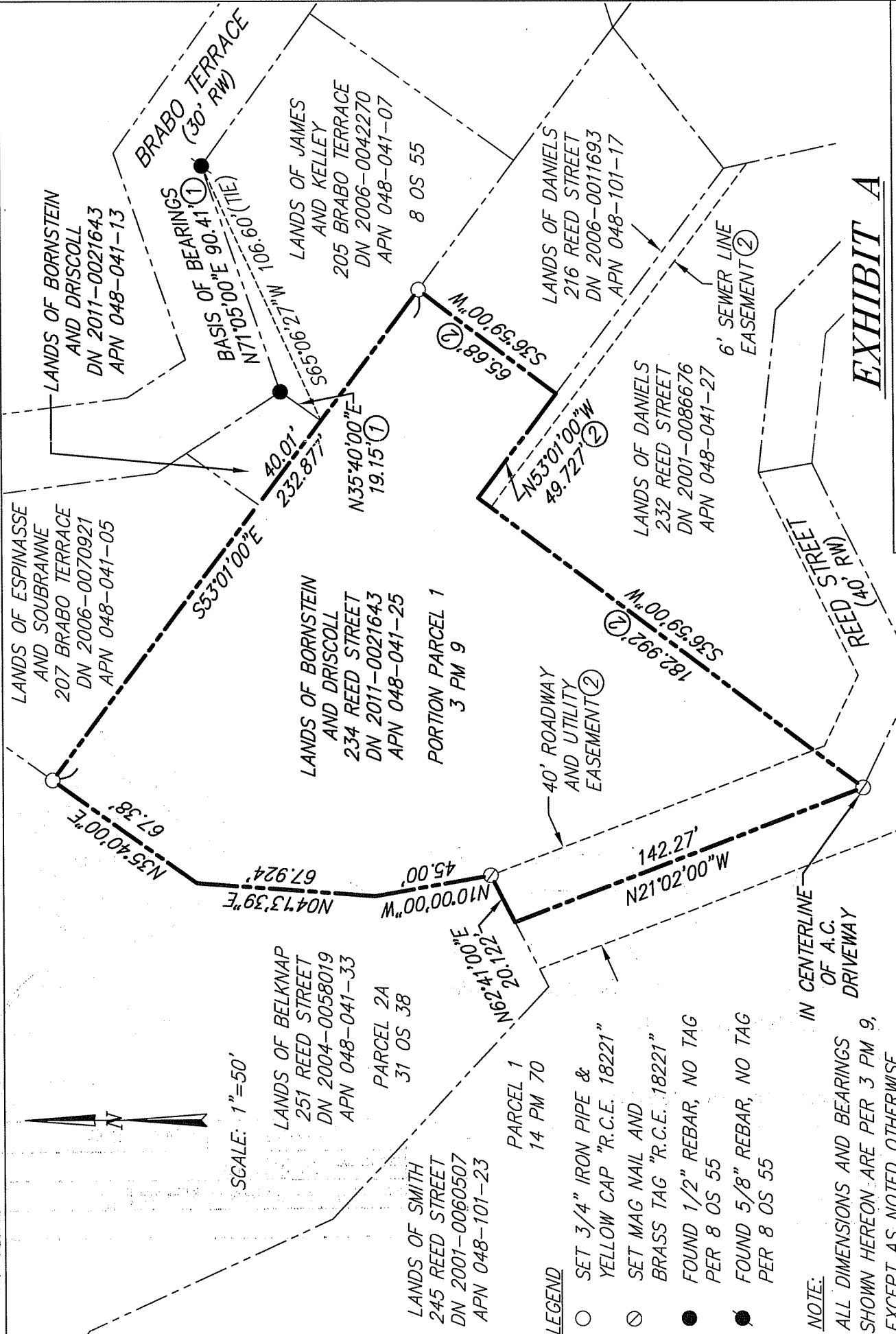


EXHIBIT A

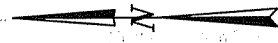
ILS ASSOCIATES, INC.
 CIVIL ENGINEERING AND LAND SURVEYING



79 GALLI DRIVE, SUITE A NOVATO, CA 94949-5717 (415)883-9200 FAX (415)883-2763

A.P.N. 048-041-13 & 25

SCALE: 1"=50'



LEGEND

- SET 3/4" IRON PIPE & YELLOW CAP "R.C.E. 18221"
- ⊙ SET MAG NAIL AND BRASS TAG "R.C.E. 18221"
- FOUND 1/2" REBAR, NO TAG PER 8 OS 55
- FOUND 5/8" REBAR, NO TAG PER 8 OS 55

NOTE:

ALL DIMENSIONS AND BEARINGS SHOWN HEREON ARE PER 3 PM 9, EXCEPT AS NOTED OTHERWISE.

REFERENCES:

- ① 8 OS 55
- ② DN 2011-0021643

DATE: 10/05/2011
 FILE: 8603CR.dwg
 PAGE 2 OF 2