

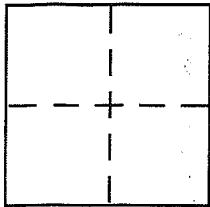
CORNER RECORD

Document Number APN 048-025-06

City of MILL VALLEY

County of MARIN, California

Brief Legal Description _____



CORNER TYPE

Government Corner Control
Meander Property
Rancho Other
Date of Survey NOV. 5, 2004

COORDINATES (Optional)

N. _____
E. _____
Zone _____ NAD27 NAD83
NAD83 Epoch _____
Elev. _____
Vert. Datum: NGVD29 NAVD88
Meas. Units: Metric Imperial

Corner - Left as found Found and tagged Established Reestablished Rebuilt

Identification and type of corner found: Evidence used to identify or procedure used to establish or reestablish the corner:

FOUND MONUMENTS AS SHOWN ON 20 05 74 AND
ON REVERSE.

A description of the physical condition of the monument as found and as set or reset: SET 3/4" IRON PIPES
AND TAG PLS 5296 AND 30d NAIL AND TAG PLS 5296 LINE POINT
IN 18" ACACIA AS SHOWN ON REVERSE.

SURVEYOR'S STATEMENT

This Corner Record was prepared by me or under my direction in conformance with

the Land Surveyor's Act on NOVEMBER 7, 2004

Signed [Signature] P.L.S. or R.C.E. No. PLS 5296



COUNTY SURVEYOR'S STATEMENT

This Corner Record was received NOVEMBER 24, 2004

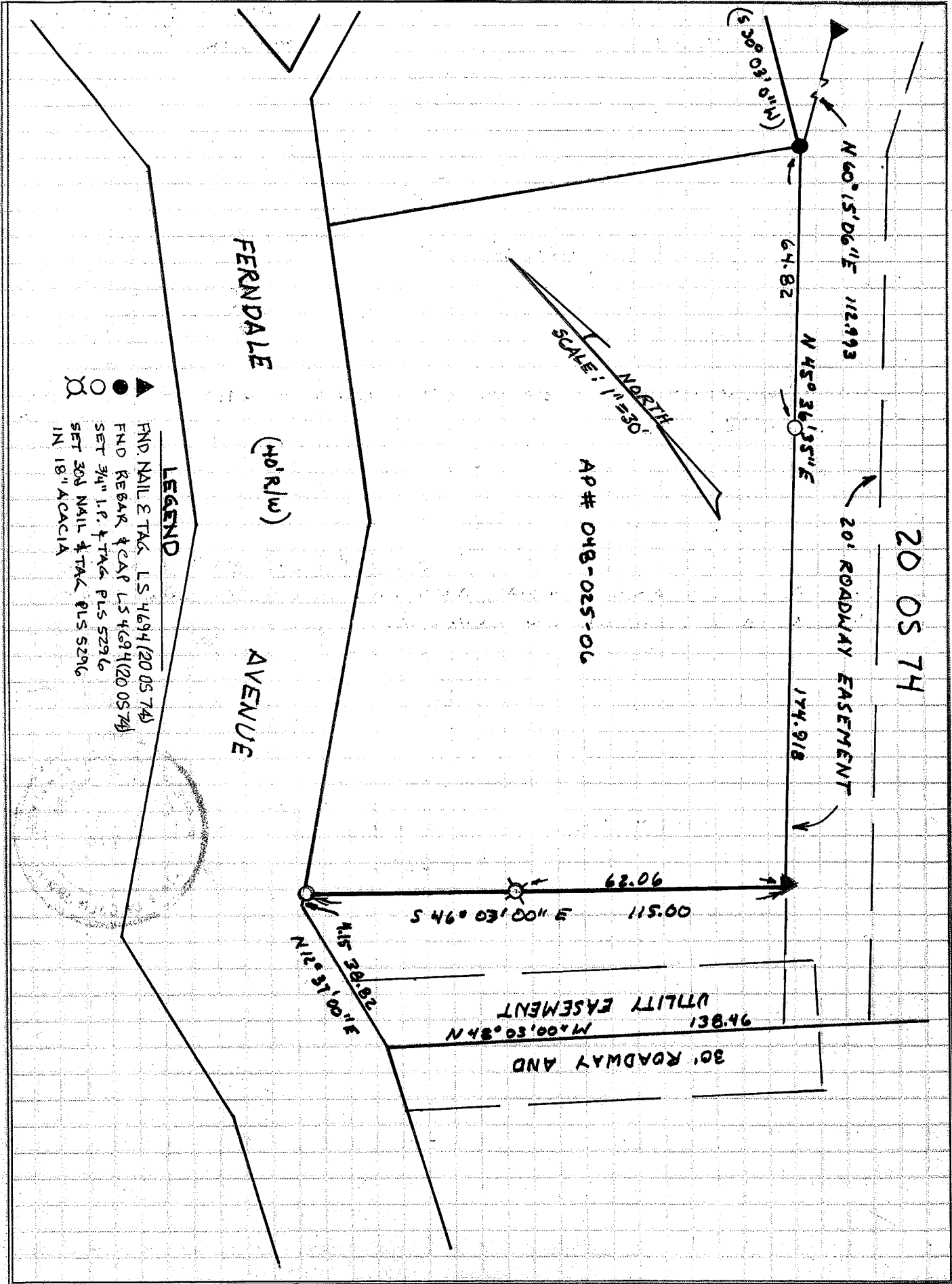
and examined and filed DECEMBER 22, 2004

Signed [Signature] P.L.S. or R.C.E. No. 7128

Title COUNTY SURVEYOR



County Surveyor's Comment _____



- LEGEND**
- ▲ FND NAIL & TAG L.S. 4694 (20 05 74)
 - FND REBAR & CAP L.S. 4694 (20 05 74)
 - SET 3/4" I.P. & TAG PLS 5296
 - SET 300 NAIL & TAG PLS 5296 IN 18" ACACIA