

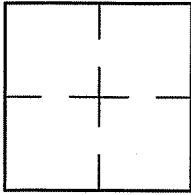
CORNER RECORD

Document Number A.P.# 047-222-07

City of MILL VALLEY

County of MARIN, California

Brief Legal Description 2000 O.S. 225



CORNER TYPE COORDINATES (Optional)

Government Corner Control

Meander Property

Rancho Other

Date of Survey 11/25/09

N. _____
 E. _____
 Zone _____ NAD27 NAD83
 NAD83 Epoch _____
 Elev. _____
 Vert. Datum: NGVD29 NAVD88
 Meas. Units: Metric Imperial

Corner- Left as found Found and tagged Established Reestablished Rebuilt

Identification and type of corner found: Evidence used to identify or procedure used to establish or reestablish the corner:
ESTABLISHED EAST PROPERTY LINE OF LANDS OF PHILLIPS AND SVENDSEN BASED ON FOUND STREET MONUMENTS
AS SHOWN ON 2000 O.S. 225

A description of the physical condition of the monument as found and as set or reset: SEE SHEET 2.

SURVEYOR'S STATEMENT

This Corner Record was prepared by me or under my direction in conformance with
 the Land Surveyor's Act on NOVEMBER 25 2009

Signed Lawrence P Doyle P.L.S. or R.C.E. No. P.L.S. 4694



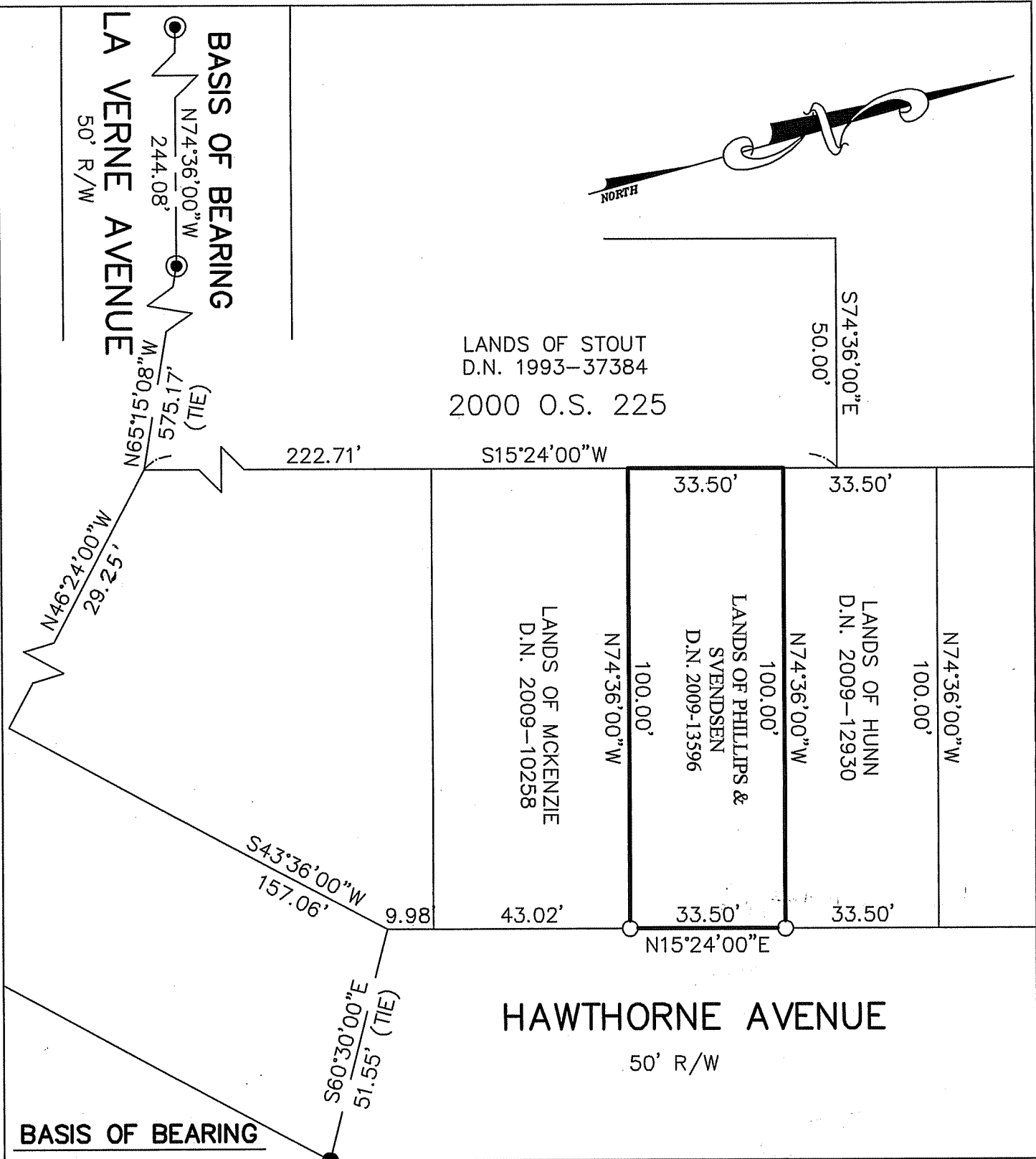
COUNTY SURVEYOR'S STATEMENT

This Corner Record was received JANUARY 15, 2010
 and examined and filed FEBRUARY 16, 2010

Signed [Signature] P.L.S. or R.C.E. No. 7128
 Title COUNTY SURVEYOR



County Surveyor's Comment _____



BASIS OF BEARING

THE BASIS OF BEARING FOR THIS SURVEY IS BETWEEN FOUND STREET MONUMENTS PER 2000 O.S. 255

LEGEND

- FOUND STREET MONUMENT
- FOUND PIPE PER 2000 O.S. 225
- SET 3/4" PIPE & PLUG, L.S. 4694



CORNER RECORD 2000 O.S. 225		
MILL VALLEY MARIN COUNTY CALIFORNIA		
SCALE: 1" = 30'	DRAWN BY:	
DATE: 11/25/09	LAWRENCE P. DOYLE	
LAND SURVEYOR/CIVIL ENGINEER		
100 HELENS LANE MILL VALLEY CA 94941 (415-388-9585)		
DRAWING NO.		
1941-09		