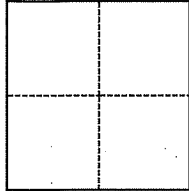


CORNER RECORD

Agency Index APN 047-221-21 (ADD)
 Document Number DPW #19-088

City of Mill Valley (APN 047-221-21) County of Marin, California

Brief Legal Description MONUMENT WELL ALONG LAVERNE AVENUE
BETWEEN MELROSE AVENUE AND SCOTT STREET



- CORNER TYPE**
- Government Corner Control
 Meander Property
 Rancho Other

Date of Survey June 5, 2019

- COORDINATES (Optional)**
- N. _____ E. _____
 Elevation _____
 Units Metric U.S. Survey Foot
 Horizontal Datum _____
 Zone _____ Epoch Date _____
 Vertical Datum _____
 Complies with Public Resources Code §§8801-8819
 Complies with Public Resources Code §§8890-8902

- PLS Act Ref.: 8765(d) 8771 8773 Other:
- Corner/
 Monument: Left as found Established Rebuilt Pre-Construction
 Found and tagged Reestablished Referenced Post-Construction

Narrative of corner identified and monument as found, set, reset, replaced, or removed:
 See sheet #2 for description(s):

FOUND 2" BRASS DISK WITH PUNCH IN MONUMENT WELL LOCATED ALONG LAVERNE AVENUE BETWEEN MELROSE AVENUE AND SCOTT STREET AS SHOWN ON RECORD OF SURVEY OF LANDS OF D'AMICO FILED DECEMBER 27, 2005 IN BOOK 2005 OF MAPS ON PAGE 367 OF OFFICIAL RECORDS.
 THIS POINT WAS REFERENCED PRIOR TO A CONSTRUCTION PROJECT IN THE VICINITY.

SURVEYOR'S STATEMENT

This Corner Record was prepared by me or under my direction in conformance with the Professional Land Surveyors' Act on July 15, 2019

Signed *[Signature]* (P.L.S.) or R.C.E. No. 8934



COUNTY SURVEYOR'S STATEMENT

This Corner Record was received July 31, 2019
 and examined and filed SEP. 04, 2019

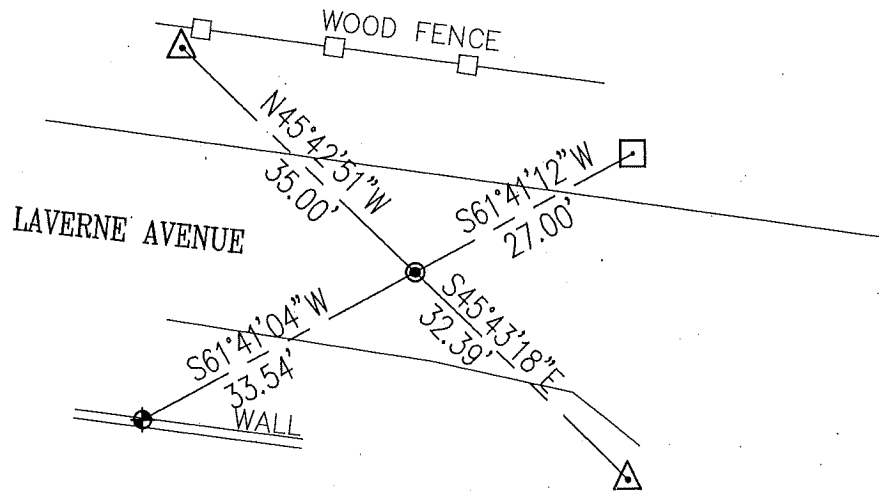
Signed *[Signature]* P.L.S. or R.C.E. No. 9292
 Title DEPUTY C.S.



County Surveyor's Comment



NOT TO SCALE



LEGEND

SYMBOLS

DESCRIPTION



FOUND STANDARD CITY MONUMENT



SET REBAR AND CAP



SET MAG NAIL



SET X ON WALL