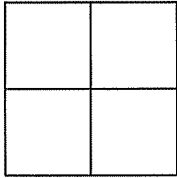


# CORNER RECORD

Document Number APN: 047-213-11

City of Mill Valley, County of Marin, State of California.

Brief Legal Description: DEED DOC. NO. 2007-0060908, PER RECORD OF SURVEY LANDS OF COWLEY  
MAP NO. 2008 RS-40



**CORNER TYPE:**

Government Corner  Control   
Meander  Property   
Rancho  Other   
Date of Survey 2/12/08

**COORDINATES:**

[Optional]  
N> \_\_\_\_\_  
E> \_\_\_\_\_  
Zone \_\_\_\_\_ Datum \_\_\_\_\_  
Elev> \_\_\_\_\_

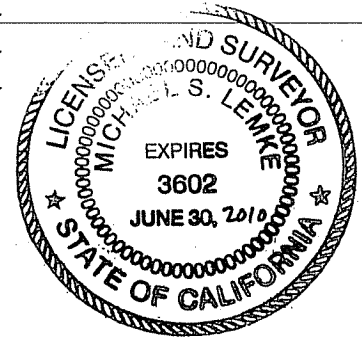
CORNER: ----- Left as found  Found & Tagged  Established  Reestablished  Rebuilt

Identification & Type of Corner Found: Evidence used to identify or procedure used to establish or reestablish the corner:

FOUND 5/8" REBAR & CAP 3602 PER SURVEY MAP 2008 R.S. 40

A description of the physical condition of the monument as found and as set or reset:

**ORIGINAL CORNERS NOT FOUND.  
SET POINTS AS SHOWN ON REVERSE.**



**SURVEYOR'S STATEMENT:**

The corner record was prepared by me or under my direction in conformance with the Land Surveyors' Act on September 18th 2008

Signed: *Michael Lemke* L.S.# 3602

**COUNTY SURVEYORS STATEMENT:**

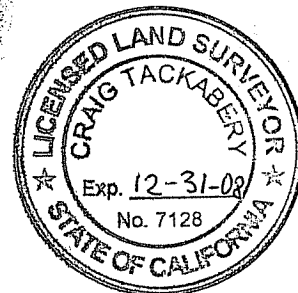
This corner record was received: SEPTEMBER 29, 2008 \_\_\_\_\_

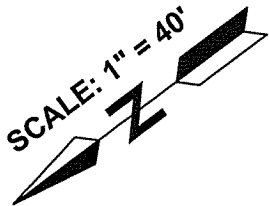
and examined and filed on OCTOBER 27, 2008 \_\_\_\_\_

Signed: *[Signature]* Title: COUNTY SURVEYOR

**COUNTY SURVEYOR'S COMMENT** \_\_\_\_\_

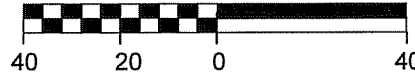
\_\_\_\_\_  
\_\_\_\_\_  
\_\_\_\_\_





**AMERICAN LAND SURVEYING**  
 2266 20th Ave, San Francisco CA 94116  
 PH: 415-665-7467 FX:415-665-7467

ORIGINAL SCALE: 1" = 40'



**MELROSE AVE 25' R/W**  
 S32°24'00"W  
 82.00'

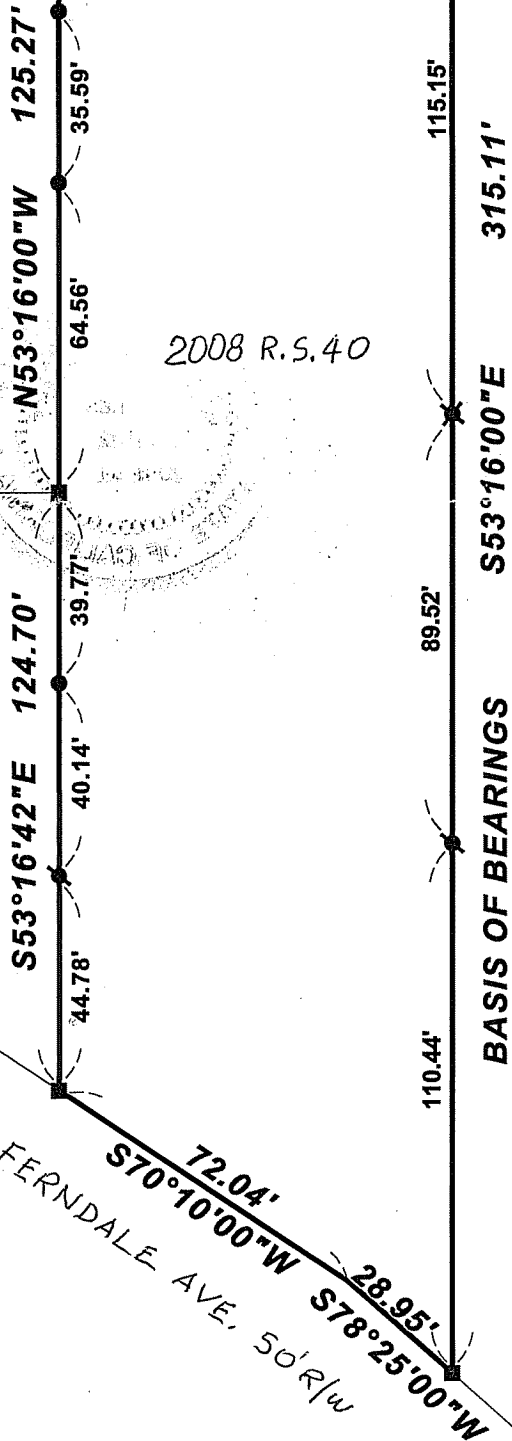
**CORNER RECORD**

**LEGEND**

- FOUND 5/8" REBAR AND CAP 3602 PER R1
- SET 1x2 & BRASS TAG LS 3602
- ⊙ SET 1/2" REBAR & CAP LS 3602
- ⊗ SET 5/8" REBAR & CAP LS 3602
- SUBJECT BOUNDARY LINES
- OTHER BOUNDARY LINES
- SURVEY TIE LINE
- R1 SURVEYS MAP 2008 R.S. 40
- 1.01'(1.00') MEASURED(RECORD)

**GENERAL NOTES**

- 1) REFERENCED MAPS PER MARIN COUNTY OFFICIAL RECORDS.
- 2) DISTANCES SHOWN IN FEET & DECIMALS.



2008 R.S. 40

**BASIS OF BEARINGS**