

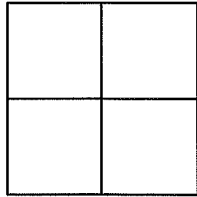
**CORNER RECORD**

Document Number APN 047-125-14

City of Mill Valley

County of Marin, California

Brief Legal Description Lot 54, of shown on "Millwood Heights Addition to Mill Valley, Being portions of Maps 5 and 7 of Tamalpais Land and Water Company, filed for record May 13, 1907 in Volume 2 of Maps, at Page 86, Marin County Records.



**CORNER TYPE**

Government Corner  Control   
 Meander  Property   
 Rancho  Other   
 Date of Survey July 20, 2016

**COORDINATES (Optional)**

N. \_\_\_\_\_  
 E. \_\_\_\_\_  
 Zone \_\_\_\_\_ Datum \_\_\_\_\_  
 Elev. \_\_\_\_\_  
 Vert. Datum: NGVD29  NAVD88   
 Meas. Units: Metric  Imperial

Corner — Left as found  Found and tagged  Established  Reestablished  Rebuilt

Identification and type of corner found: Evidence used to identify or procedure used to establish or reestablish the corner:  
We found and measured to the centerline monuments on Cape Court as shown on that Record of Survey filed in Book 2016 of Maps, at Page 12, Marin County Records. We found and measured to record monuments fronting Seymour Lane on Lot 56 and Lot 60 as shown on the same. All were in good condition and in the positions shown on the map. We then calculated Lot 54 as shown on the map. We set Brass Tags with concrete nails stamped P.L.S. 8614 on the frontage to Seymour Lane and a 1/2" Iron Pipe tagged P.L.S.8614 at the southeasterly corner at the calculated map positions. A 1/2" Iron Pipe tagged P.L.S.8614 was set 1.0' as witness from the calculated map position of the northeasterly corner of Lot 54 along the southeasterly line of Lot 54.

A description of the physical condition of the monument as found and as set or reset: \_\_\_\_\_  
All monuments found and used were in good condition and did not appear to be disturbed.

**SURVEYOR'S STATEMENT**

This Corner Record was prepared by me or under my direction in conformance with the Land Surveyor's Act on October 27, 2016

Signed [Signature] P.L.S. or R.C.E. No. 8614



**COUNTY SURVEYOR'S STATEMENT**

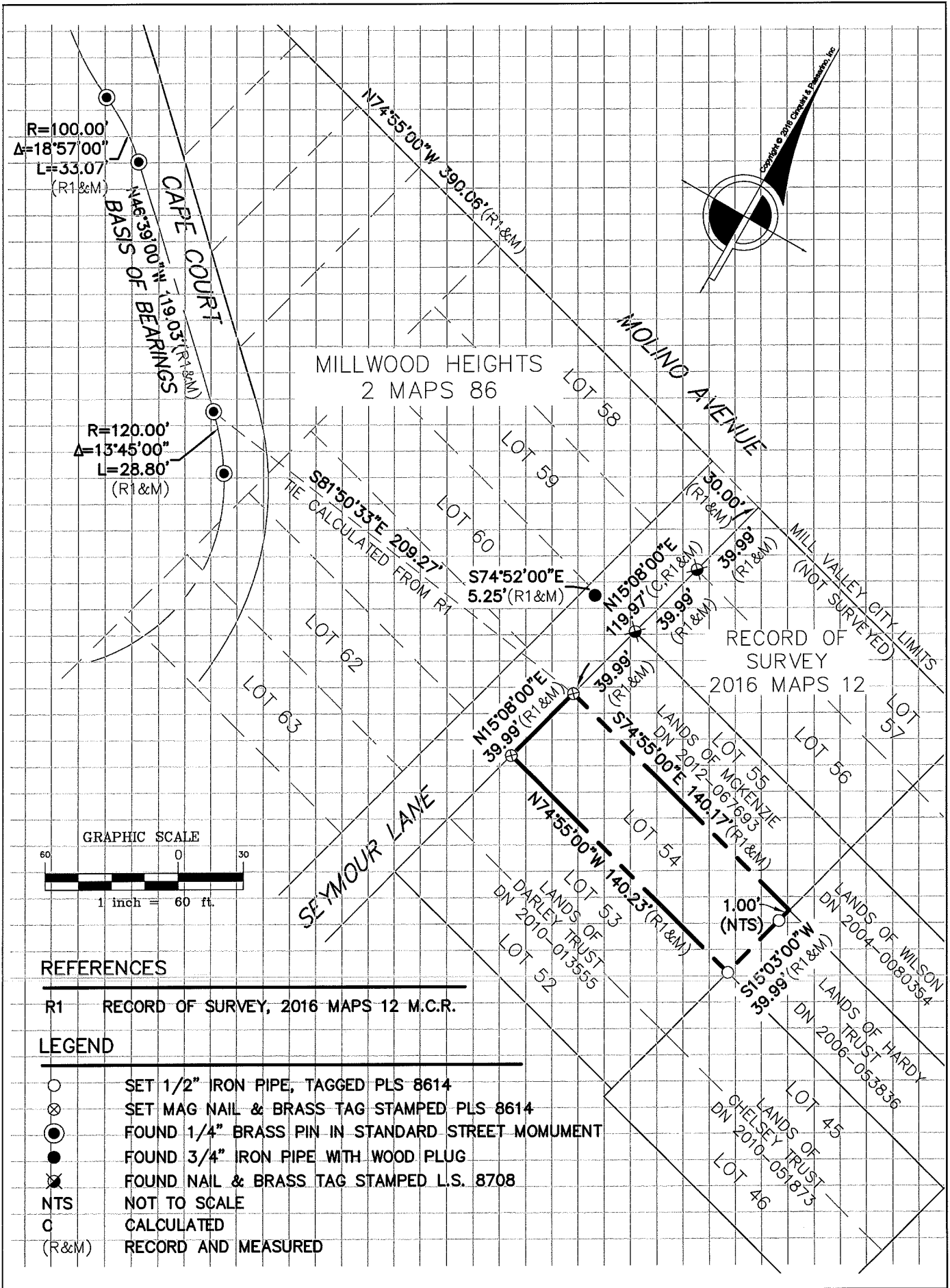
This Corner Record was received AUGUST 25, 2016 and examined and filed NOVEMBER 2, 2016

Signed [Signature] P.L.S. or R.C.E. No. 7821

Title County Surveyor

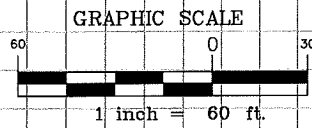
County Surveyor's Comments \_\_\_\_\_





R=100.00'  
 $\Delta=18^{\circ}57'00''$   
 L=33.07'  
 (R1&M)

R=120.00'  
 $\Delta=13^{\circ}45'00''$   
 L=28.80'  
 (R1&M)



**REFERENCES**

R1 RECORD OF SURVEY, 2016 MAPS 12 M.C.R.

**LEGEND**

- SET 1/2" IRON PIPE, TAGGED PLS 8614
- ⊗ SET MAG NAIL & BRASS TAG STAMPED PLS 8614
- FOUND 1/4" BRASS PIN IN STANDARD STREET MONUMENT
- FOUND 3/4" IRON PIPE WITH WOOD PLUG
- ⊗ FOUND NAIL & BRASS TAG STAMPED L.S. 8708
- NTS NOT TO SCALE
- C CALCULATED
- (R&M) RECORD AND MEASURED