

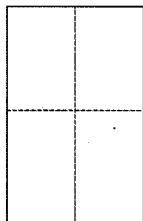
**CORNER RECORD**

Document Number 047-092-29

City of MILL VALLEY

County of MARIN, California

Brief Legal Description Lot 13-A, being a portion of Lot 13, Map of Housing Cooperative, Book 16 of Maps, at Page 16, M.C.R.



**CORNER TYPE**

Government Corner  Control   
Meaneder  Property   
Rancho  Other   
Date of Survey 08/28/2014

**COORDINATES (Optional)**

N. \_\_\_\_\_  
E. \_\_\_\_\_  
Zone \_\_\_\_\_ NAD27  NAD83   
NAD83 Epoch \_\_\_\_\_  
Elev. \_\_\_\_\_  
Vert. Datum: NGVD29  NAVD88   
Meas. Units: Metric  Imperial

Corner - Left as found  Found and tagged  Established  Reestablished  Rebuilt

Identification and type of corner found: Evidence used to identify or procedure used to establish or reestablish the corner:  
Centerline Monuments along Amaranth Blvd., found to be in Record position and used to set monuments at angle points along the most southerly and westerly boundary lines of Lot 13-A, shown on Parcel Map filed in Book 18 of Maps, at Page 53, M.C.R.

A description of the physical condition of the monument as found and as set or reset:  
Set (2) .5" iron pipe LS7237 and (2) Brass Tag and Rivet LS7237 as shown on exhibit drawing (opposite page).

**SURVEYOR'S STATEMENT**

This Corner Record was prepared by me or under my direction in conformance with the Land Surveyor's Act on Aug. 31, 2014

Signed Michael E. Ford P.L.S. or R.C.E. No. 7237



**COUNTY SURVEYOR'S STATEMENT**

This Corner Record was received 09/12/2014

and examined and filed 9-24-2014

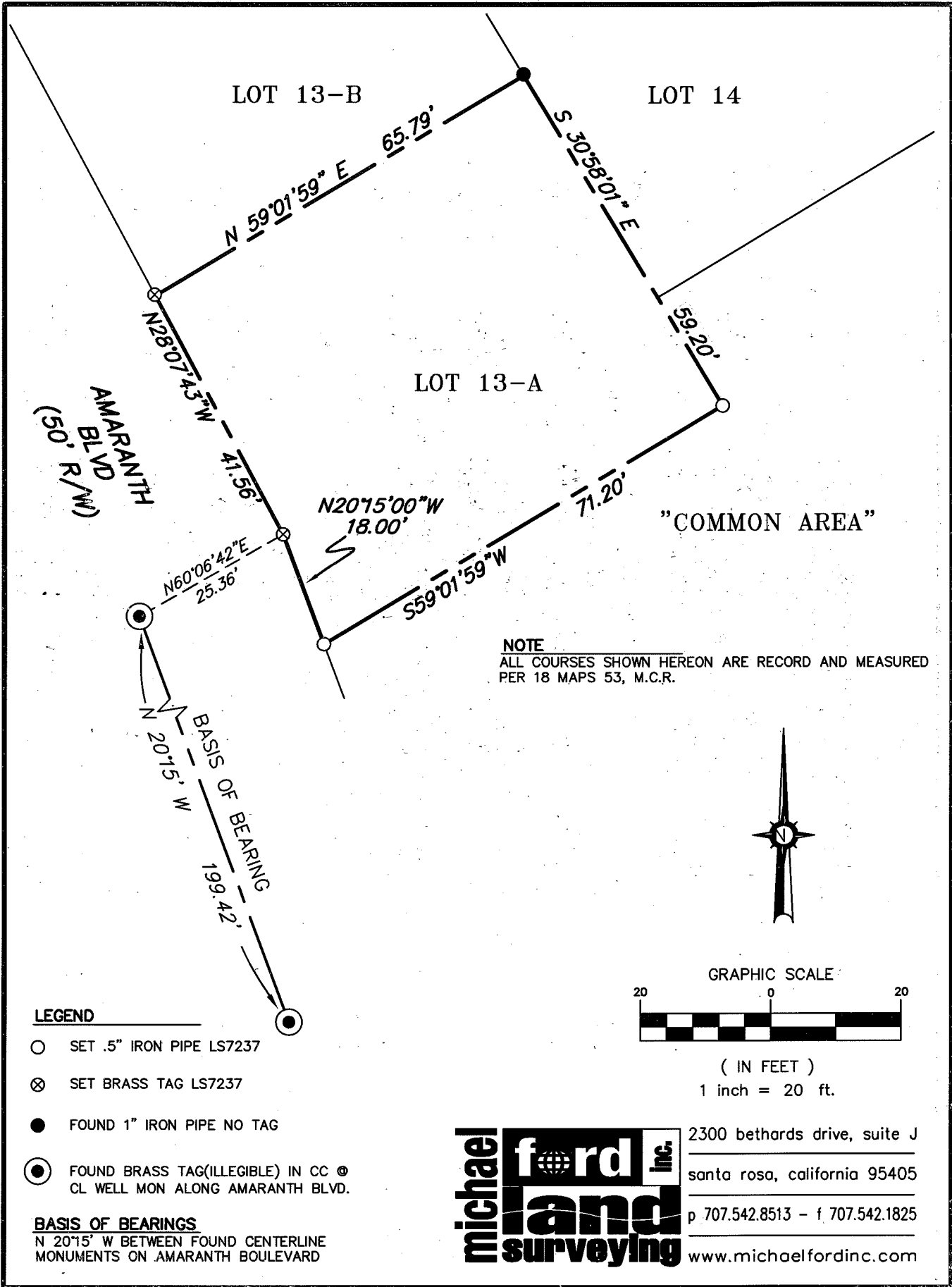
Signed Richard G. Simonitch P.L.S. or R.C.E. No. 7821

Title DEPUTY



**County Surveyor's Comment**

\_\_\_\_\_  
\_\_\_\_\_  
\_\_\_\_\_



LOT 13-B

LOT 14

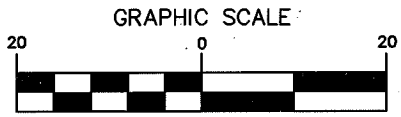
LOT 13-A

AMARANTH  
BLVD  
(50' R/W)

"COMMON AREA"

**NOTE**  
ALL COURSES SHOWN HEREON ARE RECORD AND MEASURED  
PER 18 MAPS 53, M.C.R.

BASIS OF BEARING  
N 20°15' W  
199.42'



( IN FEET )  
1 inch = 20 ft.

**LEGEND**

- SET .5" IRON PIPE LS7237
- ⊗ SET BRASS TAG LS7237
- FOUND 1" IRON PIPE NO TAG
- ⊙ FOUND BRASS TAG (ILLEGIBLE) IN CC ⊙  
CL WELL MON ALONG AMARANTH BLVD.

**BASIS OF BEARINGS**  
N 20°15' W BETWEEN FOUND CENTERLINE  
MONUMENTS ON AMARANTH BOULEVARD

**michael ford inc.**  
**land surveying**

2300 bethards drive, suite J  
santa rosa, california 95405  
p 707.542.8513 - f 707.542.1825  
www.michaelfordinc.com