

# CORNER RECORD

Agency Index 20-018

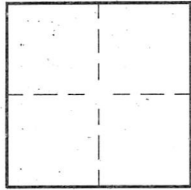
Document Number APN: 047-092-21

City of UNINCORPORATED County of MARIN, California

Brief Legal Description LOT 15, MAP OF THE HOUSING COOPERATIVE, FILED NOV 12, 1974 IN 16 MAPS 16

### CORNER TYPE

### COORDINATES (Optional)



Government Corner  Control   
Meander  Property   
Rancho  Other

Date of Survey 03/05/2020

N. \_\_\_\_\_ E. \_\_\_\_\_

Elevation \_\_\_\_\_

Units Metric  U.S. Survey Foot

Horizontal Datum \_\_\_\_\_

Zone \_\_\_\_\_ Epoch Date \_\_\_\_\_

Vertical Datum \_\_\_\_\_

Complies with Public Resources Code §§8801-8819

Complies with Public Resources Code §§88900-8902

PLS Act Ref.:  **8765(d)**  **8771**  **8773**  **Other:**

Corner/Monument:  Left as found  Established  Rebuilt  Pre-Construction

Found and tagged  Reestablished  Referenced  Post-Construction

Narrative of corner identified and monument as found, set, reset, replaced, or removed:

See sheet #2 for description(s):

FOUND AND USED (3) STANDARD MONUMENTS IN MONUMENT WELL ON CENTERLINE OF AMARANTH DRIVE PER 16 MAPS 16 STANLEY REINFELD FOUND STANDARD MONUMENTS PER 16 MAPS 16 (THIS SUBDIVISION) IN 1974 STANLEY REINFELD ONLY USED SAME STANDARD MONUMENTS PER 18 PM 53 TO SUBDIVIDE LOT 13 OF 16M16 IN 1978 LAWRENCE DOYLE FOUND AND USED STANDARD MONUMENTS PER CORNER RECORD 047-092-16 IN 2008 MICHAEL FORD FOUND AND USED STANDARD MONUMENTS PER CORNER RECORD 047-092-29 IN 2014 THE CORNERS SET PER THIS CORNER RECORD WERE ESTABLISHED USING THE SAME BOUNDARY RESOLUTION THAT HAS BEEN ESTABLISHED SINCE 1974 AND REPEATED BY THE ORIGINAL SURVEYOR OF THE SUBDIVISION AND OTHER SURVEYORS. SET (3) 3/4" IRON PIPE TAGGED "LS 7539"  
SET (1) NAIL AND TAG, TAGGED "LS 7539" IN CONCRETE WALK

### SURVEYOR'S STATEMENT

This Corner Record was prepared by me or under my direction in conformance with

the Professional Land Surveyor's Act on JULY 30, 2020

Signed [Signature] P.L.S. or R.C.E. No. LS 7539



### COUNTY SURVEYOR'S STATEMENT

This Corner Record was received \_\_\_\_\_

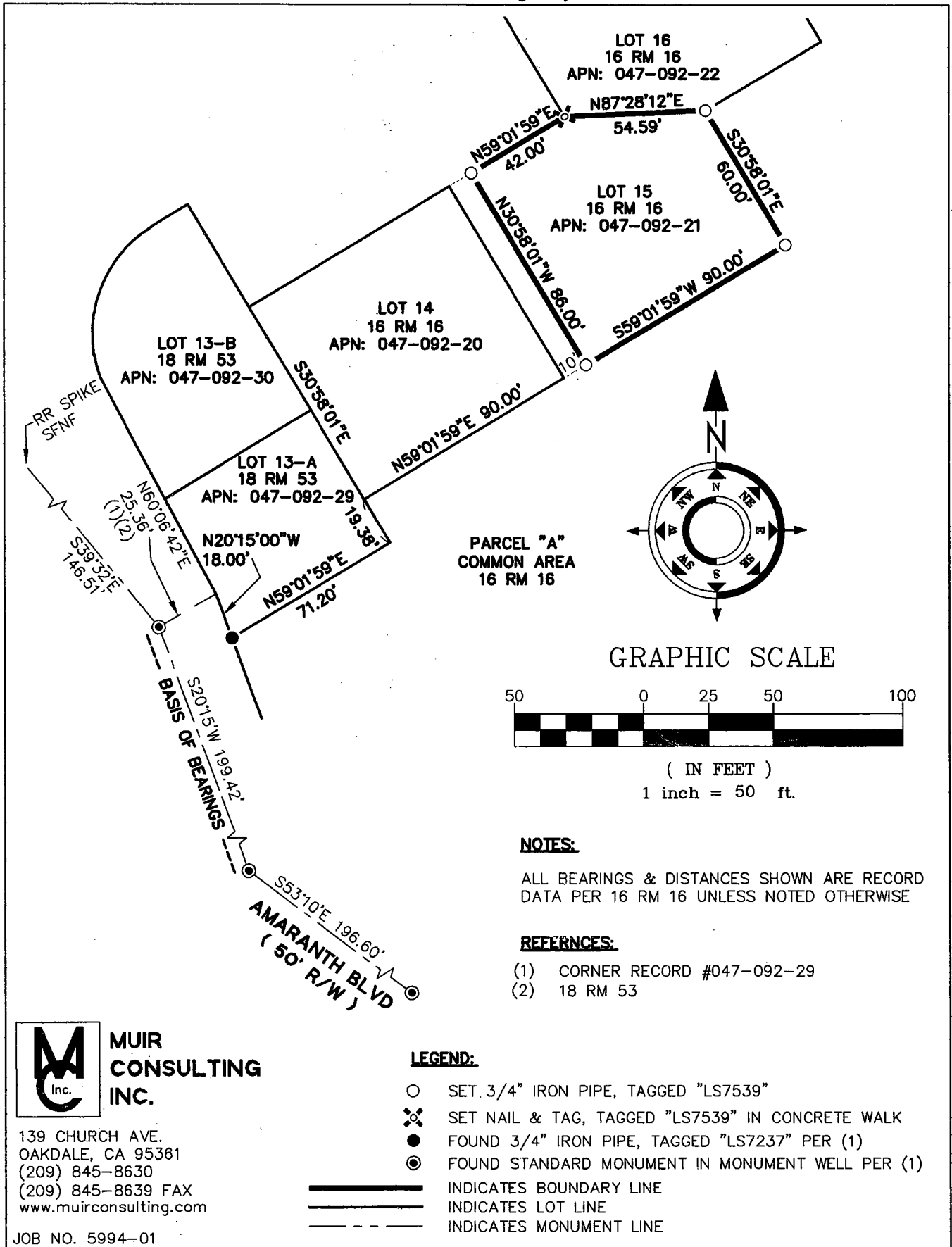
and examined and filed 09/16/2020

Signed [Signature] P.L.S. or R.C.E. No. 9292

Title DEPUTY C.S.

County Surveyor's Comment:





**MUIR CONSULTING INC.**

139 CHURCH AVE.  
OAKDALE, CA 95361  
(209) 845-8630  
(209) 845-8639 FAX  
www.muirconsulting.com

JOB NO. 5994-01