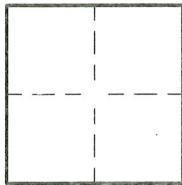


CORNER RECORD

Agency Index CR22-084
 Document Number APN: 047-092-20

City of UNINCORPORATED County of MARIN, California
 Brief Legal Description LOT 14, MAP OF THE HOUSING COOPERATIVE, FILED NOV 12, 1974 IN 16 MAPS 16



CORNER TYPE

Government Corner Control
 Meander Property
 Rancho Other
 Date of Survey 06/16/2022

COORDINATES (Optional)

N. _____ E. _____
 Elevation _____
 Units Metric U.S. Survey Foot
 Horizontal Datum _____
 Zone _____ Epoch Date _____
 Vertical Datum _____
 Complies with Public Resources Code §§8801-8819
 Complies with Public Resources Code §§88900-8902

PLS Act Ref.: 8765(d) 8771 8773 Other:
 Corner/Monument: Left as found Established Rebuilt Pre-Construction
 Found and tagged Reestablished Referenced Post-Construction

Narrative of corner identified and monument as found, set, reset, replaced, or removed:

See sheet #2 for description(s):

FOUND AND USED (3) STANDARD MONUMENTS IN MONUMENT WELL ON CENTERLINE OF AMARANTH DRIVE PER 16 MAPS 16 STANLEY REINFELD FOUND STANDARD MONUMENTS PER 16 MAPS 16 (THIS SUBDIVISION) IN 1974 STANLEY REINFELD ONLY USED SAME STANDARD MONUMENTS PER 18 PM 53 TO SUBDIVIDE LOT 13 OF 16M16 IN 1978 LAWRENCE DOYLE FOUND AND USED STANDARD MONUMENTS PER CORNER RECORD 047-092-16 IN 2008 MICHAEL FORD FOUND AND USED STANDARD MONUMENTS PER CORNER RECORD 047-092-29 IN 2014 THE CORNERS SET PER THIS CORNER RECORD WERE ESTABLISHED USING THE SAME BOUNDARY RESOLUTION THAT HAS BEEN ESTABLISHED SINCE 1974 AND REPEATED BY THE ORIGINAL SURVEYOR OF THE SUBDIVISION AND OTHER SURVEYORS. SET (4) 3/4" IRON PIPE TAGGED "LS 7735"

SURVEYOR'S STATEMENT

This Corner Record was prepared by me or under my direction in conformance with the Professional Land Surveyors Act on 6/27/22
 Signed [Signature] P.L.S. or R.C.E. No. LS 7735

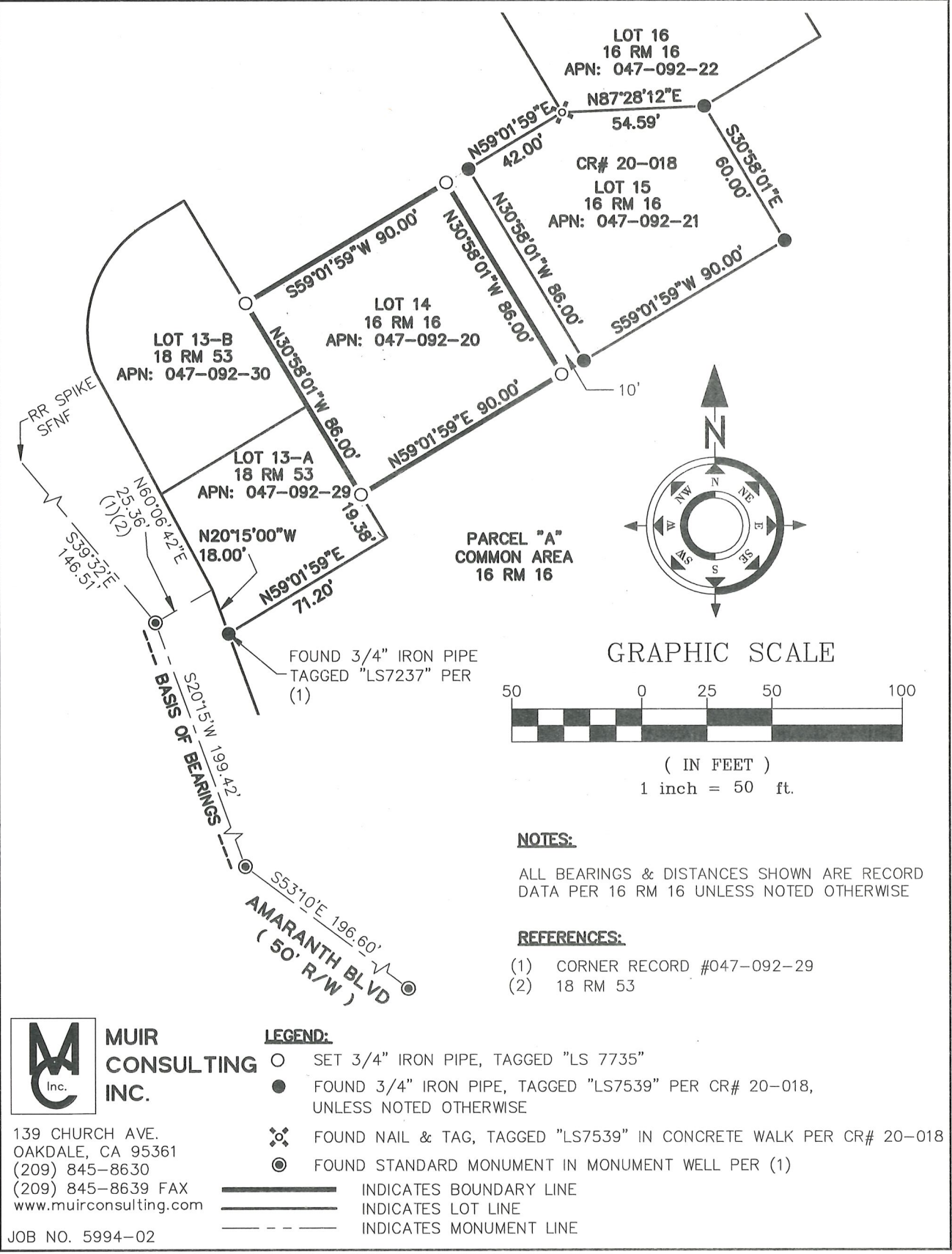


COUNTY SURVEYOR'S STATEMENT

This Corner Record was received 07/05/22
 and examined and filed 07/13/22
 Signed [Signature] P.L.S. or R.C.E. No. 8176
 Title COUNTY SURVEYOR



County Surveyor's Comment:



MUIR CONSULTING INC.
139 CHURCH AVE.
OAKDALE, CA 95361
(209) 845-8630
(209) 845-8639 FAX
www.muirconsulting.com
JOB NO. 5994-02