

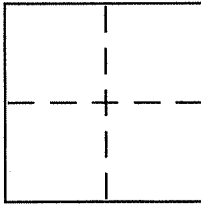
CORNER RECORD

Document Number 047-061-10

City of MILL VALLEY

County of MARIN, California

Brief Legal Description LOTS 62, 63, & 65 OF CAMP TAMALPAIS 3RD



CORNER TYPE

- Government Corner Control
- Meander Property
- Rancho Other
- Date of Survey _____

COORDINATES (Optional)

N. _____
 E. _____
 Zone _____ NAD27 NAD83
 NAD83 Epoch _____
 Elev. _____
 Vert. Datum: NGVD29 NAVD88
 Meas. Units: Metric Imperial

Corner - Left as found Found and tagged Established Reestablished Rebuilt

Identification and type of corner found: Evidence used to identify or procedure used to establish or reestablish the corner:

SEE PAGE 2 OF 2

A description of the physical condition of the monument as found and as set or reset:

SEE PAGE 2 OF 2

SURVEYOR'S STATEMENT

This Corner Record was prepared by me or under my direction in conformance with the Land Surveyor's Act on 12/7/06

Signed [Signature] P.L.S or P.C.E. No. 6784



COUNTY SURVEYOR'S STATEMENT

This Corner Record was received DECEMBER 13, 2006

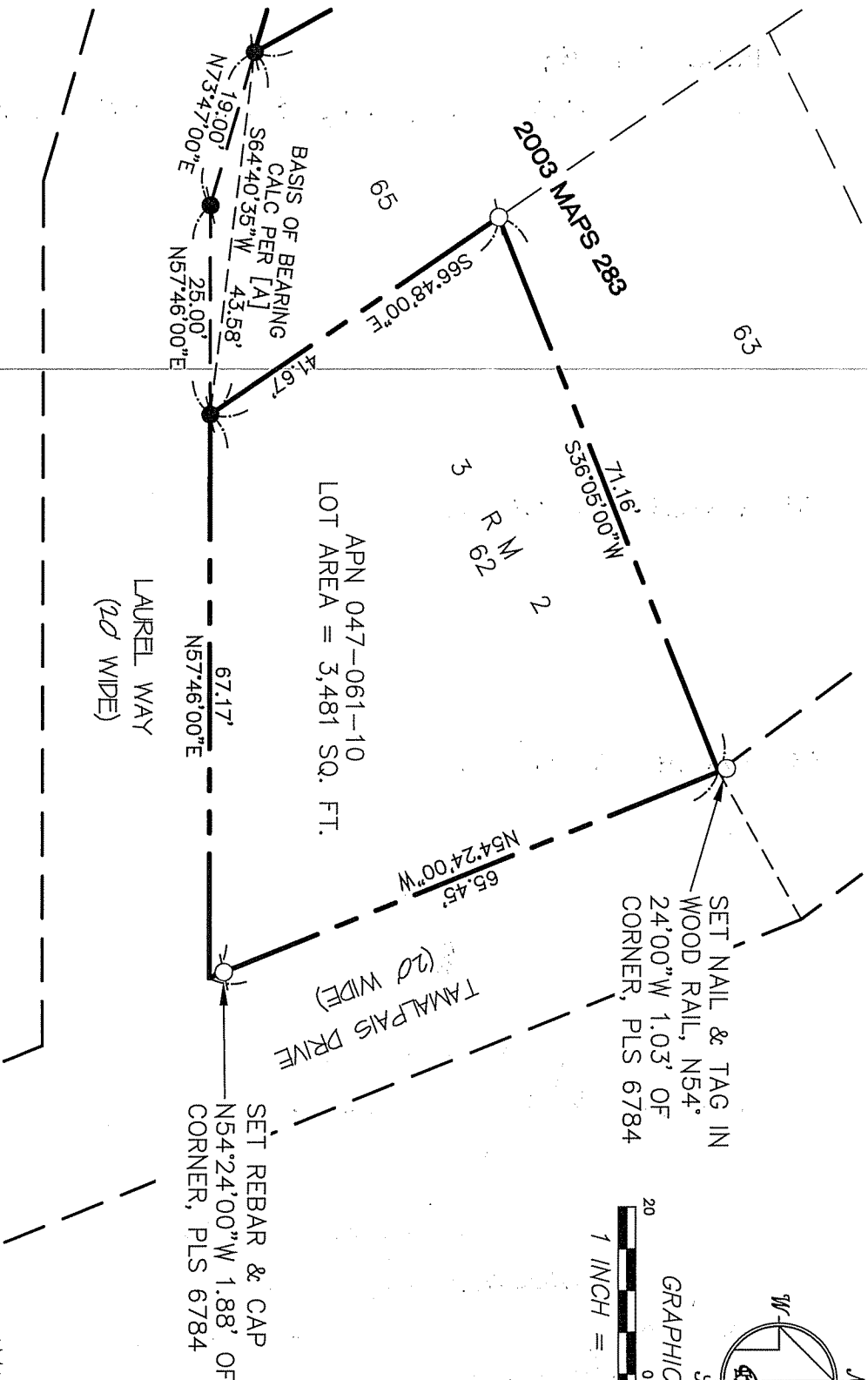
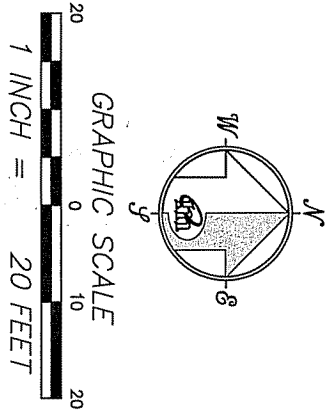
and examined and filed JANUARY 16, 2007

Signed [Signature] P.L.S or P.C.E. No. 7128

Title COUNTY SURVEYOR



County Surveyor's Comment _____



APN 047-061-10
 LOT AREA = 3,481 SQ. FT.

LAUREL WAY
 (20' WIDE)

TAMALPAIS DRIVE
 (20' WIDE)

523 TAMALPAIS DRIVE
 MILL VALLEY

CORNER RECORD

REFERENCE
 [A] "RECORD OF SURVEY, LANDS OF MADDISON AND FARRELL, RECORDED NOVEMBER 17, 2003 IN VOLUME 2003 OF MAPS AT PAGE 283, MARIN COUNTY RECORDS.

LEGEND
 SET 5/8" REBAR WITH CAP, PLS 6784
 FOUND REBAR & CAP, PLS 5767 PER [A]
 NOTE
 RECORD=MEASURED

MERIDIAN SURVEYING ENGINEERING, INC.
 1812 UNION STREET
 SAN FRANCISCO, CA 94123
 (415) 440-4131
 info@meridiansurvey.com
 06122
 777 GRAND AVENUE, SUITE 202
 SAN RAFAEL, CA 94901
 (415) 456-5450