

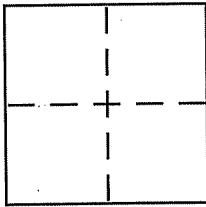
CORNER RECORD

Document Number 047-061-10

City of MILL VALLEY

County of MARIN, California

Brief Legal Description LOT 62 OF CAMP TAMALPAIS,



CORNER TYPE

Government Corner Control
Meander Property
Rancho Other
Date of Survey SEPT 11 2006

COORDINATES (Optional)

N. _____
E. _____
Zone _____ NAD27 NAD83
NAD83 Epoch _____
Elev. _____
Vert. Datum: NGVD29 NAVD88
Meas. Units: Metric Imperial

Corner - Left as found Found and tagged Established Reestablished Rebuilt

Identification and type of corner found: Evidence used to identify or procedure used to establish or reestablish the corner:

SEE PAGE 2

A description of the physical condition of the monument as found and as set or reset:

SEE PAGE 2

SURVEYOR'S STATEMENT

This Corner Record was prepared by me or under my direction in conformance with the Land Surveyor's Act on 9/26/06

Signed [Signature] P.L.S or R.C.E. No. 6784

COUNTY SURVEYOR'S STATEMENT

This Corner Record was received OCTOBER 17, 2006

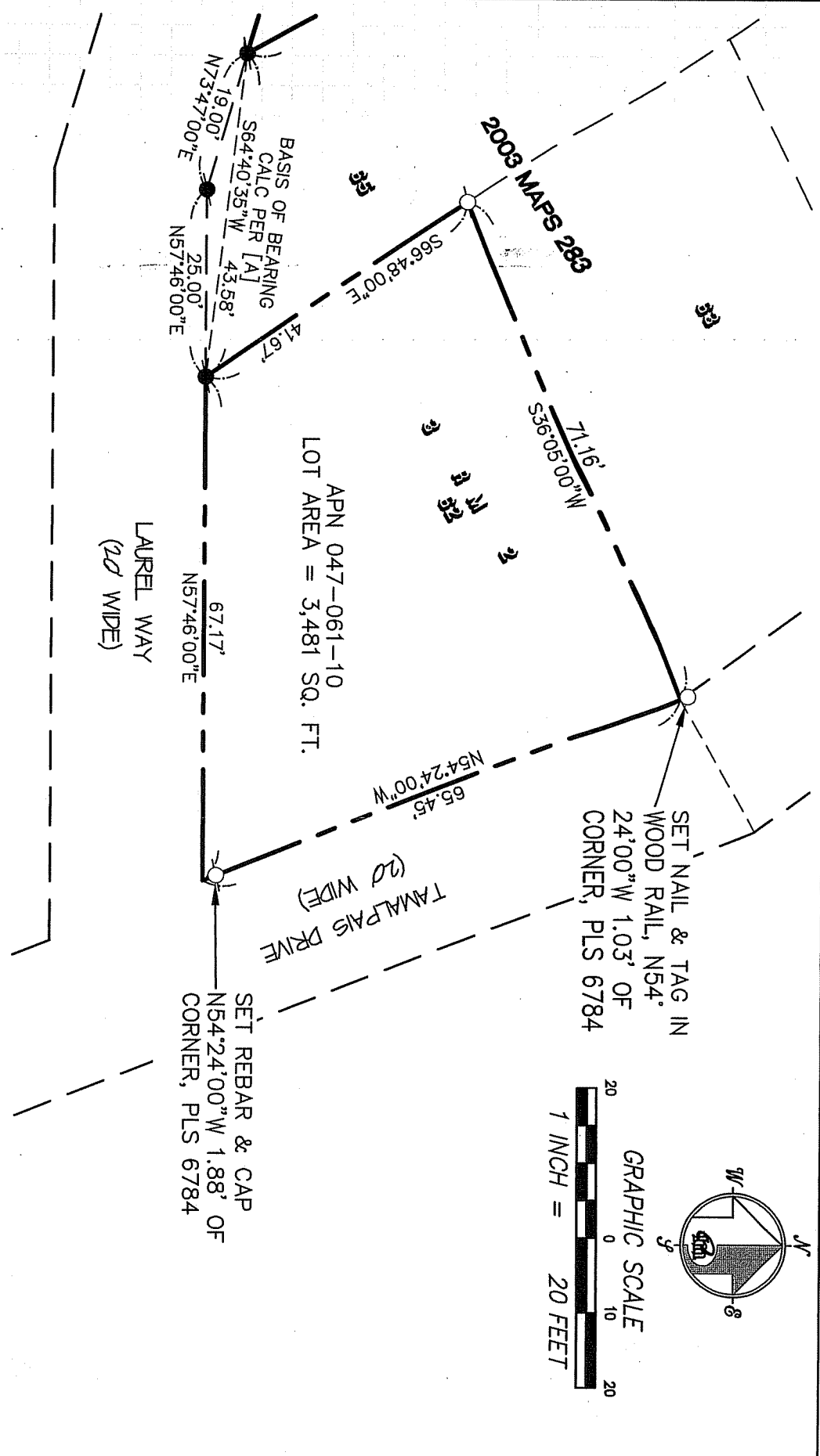
and examined and filed NOVEMBER 15, 2006

Signed [Signature] P.L.S or R.C.E. No. 7128

Title COUNTY SURVEYOR

County Surveyor's Comment _____





REFERENCE

[A] "RECORD OF SURVEY, LANDS OF MADDISON AND FARRELL, RECORDED NOVEMBER 17, 2003 IN VOLUME 2003 OF MAPS AT PAGE 283, MARIN COUNTY RECORDS.

LEGEND

- SET 5/8" REBAR WITH CAP, PLS 6784
 - FOUND REBAR & CAP, PLS 5767
- NOTE
RECORD=MEASURED

CORNER RECORD

MERIDIAN SURVEYING, INC.
 1812 UNION STREET
 SAN FRANCISCO, CA 94123
 (415) 440-4131

06122 777 GRAND AVENUE, SUITE 202
 SAN RAFAEL, CA 94901
 (415) 468-6450

info@meridiansurvey.com