

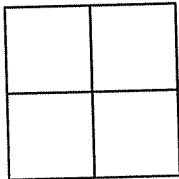
# CORNER RECORD

Document Number APN:047-032-31

County of MARIN

State of California.

Brief Legal Description: PARCEL 'C' OF 3 PM 77



**CORNER TYPE:**

- Government Corner  Control
- Meander  Property
- Rancho  Other
- Date of Survey 6/04/09

**COORDINATES:**

[Optional]

N> \_\_\_\_\_  
 E> \_\_\_\_\_  
 Zone \_\_\_\_\_ Datum \_\_\_\_\_  
 Elev> \_\_\_\_\_

CORNER: ----- Left as found  Found & Tagged  Established  Reestablished  Rebuilt

Identification & Type of Corner Found: Evidence used to identify or procedure used to establish or reestablish the corner:

**FOUND MONUMENTS AS SHOWN ON 3 PM 77 AND SET MONUMENTS AS SHOWN ON REVERSE.**

A description of the physical condition of the monument as found and as set or reset:

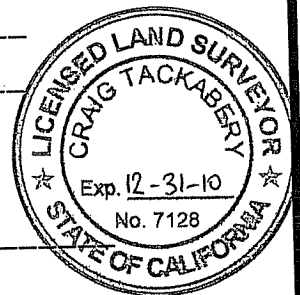
**Original corners not found.  
Set points as shown on reverse.**



**SURVEYOR'S STATEMENT:**

The corner record was prepared by me or under my direction in conformance with the Land Surveyors' Act on JAN 6 2010

Signed : Douglas J Matteson RCE# 18200



**COUNTY SURVEYORS STATEMENT:**

This corner record was received: JANUARY 7, 2010 \_\_\_\_\_  
and filed FEBRUARY 24, 2010 \_\_\_\_\_

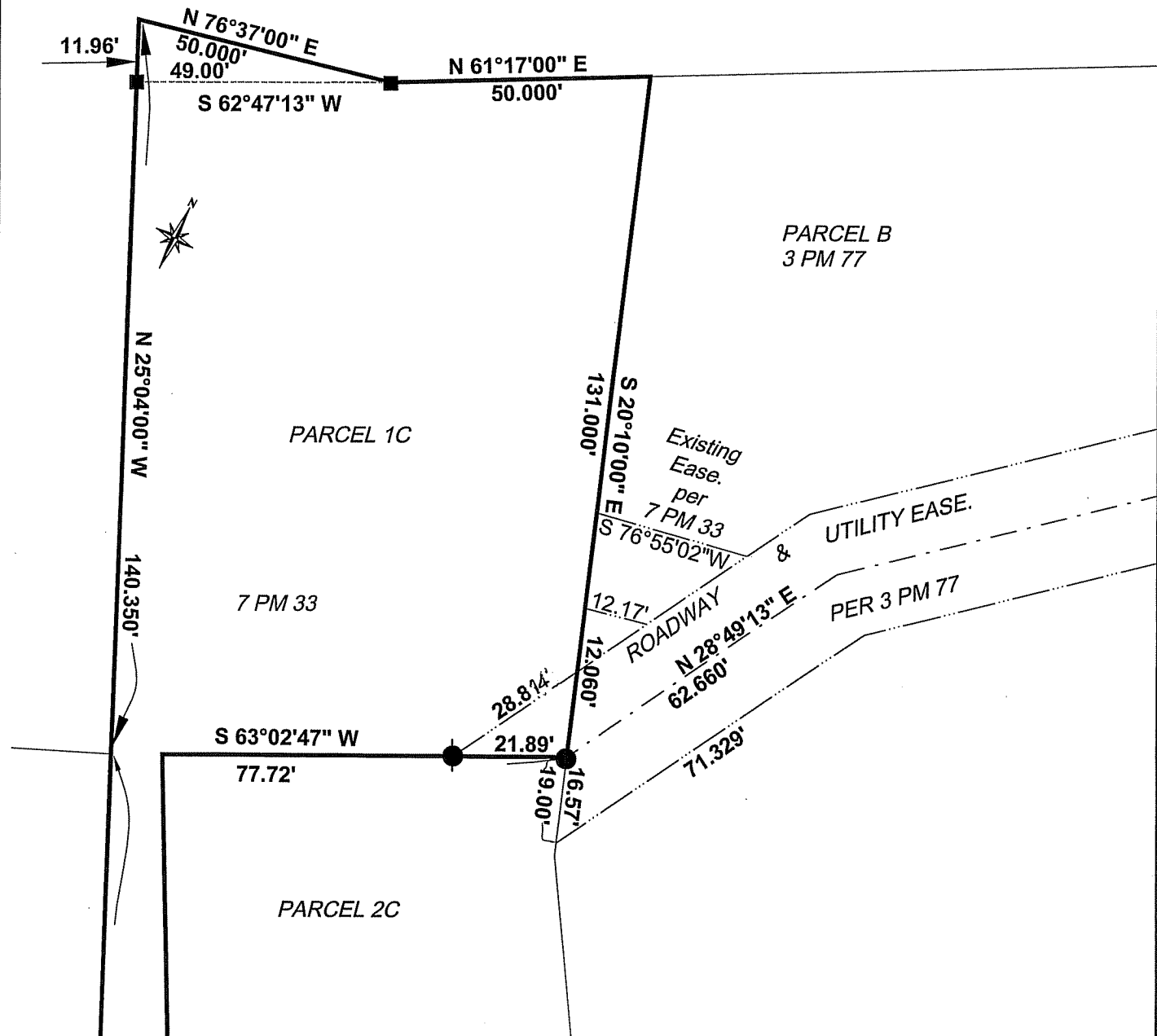
Signed Craig Tackabery Title: COUNTY SURVEYOR  
**CRAIG TACKABERY**

COUNTY SURVEYOR'S COMMENT \_\_\_\_\_



### LEGEND

- SET NAIL AND TAG R.C.E. 18200
- SET  $\frac{5}{8}$ " REBAR & CAP R.C.E. 18200
- FOUND IP IN CONC PER R1
- R1 7 PM 33
- SUBJECT PROPERTY LINES
- ADJOINER PROPERTY LINES
- EASEMENT LINES PER R1
- - - SURVEY TIES



GRAPHIC SCALE: 1" = 30'

