

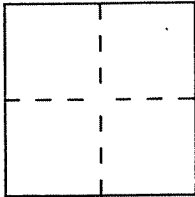
CORNER RECORD

Document Number A.P.N. 43-430-12

City of MILL VALLEY

County of MARIN, California

Brief Legal Description LOT 50, MAP OF STRAWBERRY VISTA SUB 21 RM33



CORNER TYPE

Government Corner Control
Meander Property
Rancho Other
Date of Survey _____

**COORDINATES
(Optional)**

N. _____
E. _____
Zone _____ Datum _____
Elev. _____

Corner — Left as found Found and tagged Established Reestablished Rebuilt

Identification and type of corner found: Evidence used to identify or procedure used to establish or reestablish the corner:

SEE PAGE 2 / 2

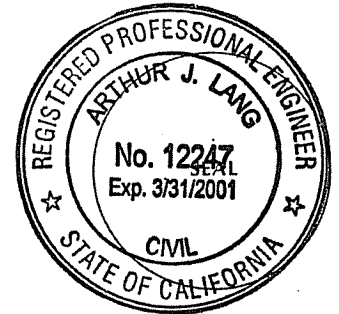
A description of the physical condition of the monument as found and as set or reset:

SEE PAGE 2 / 2

SURVEYOR'S STATEMENT

This Corner Record was prepared by me or under my direction in conformance with the Land Surveyors' Act on 12/20/2000 19__.

Signed [Signature] L.S. or R.C.E. Number 12247



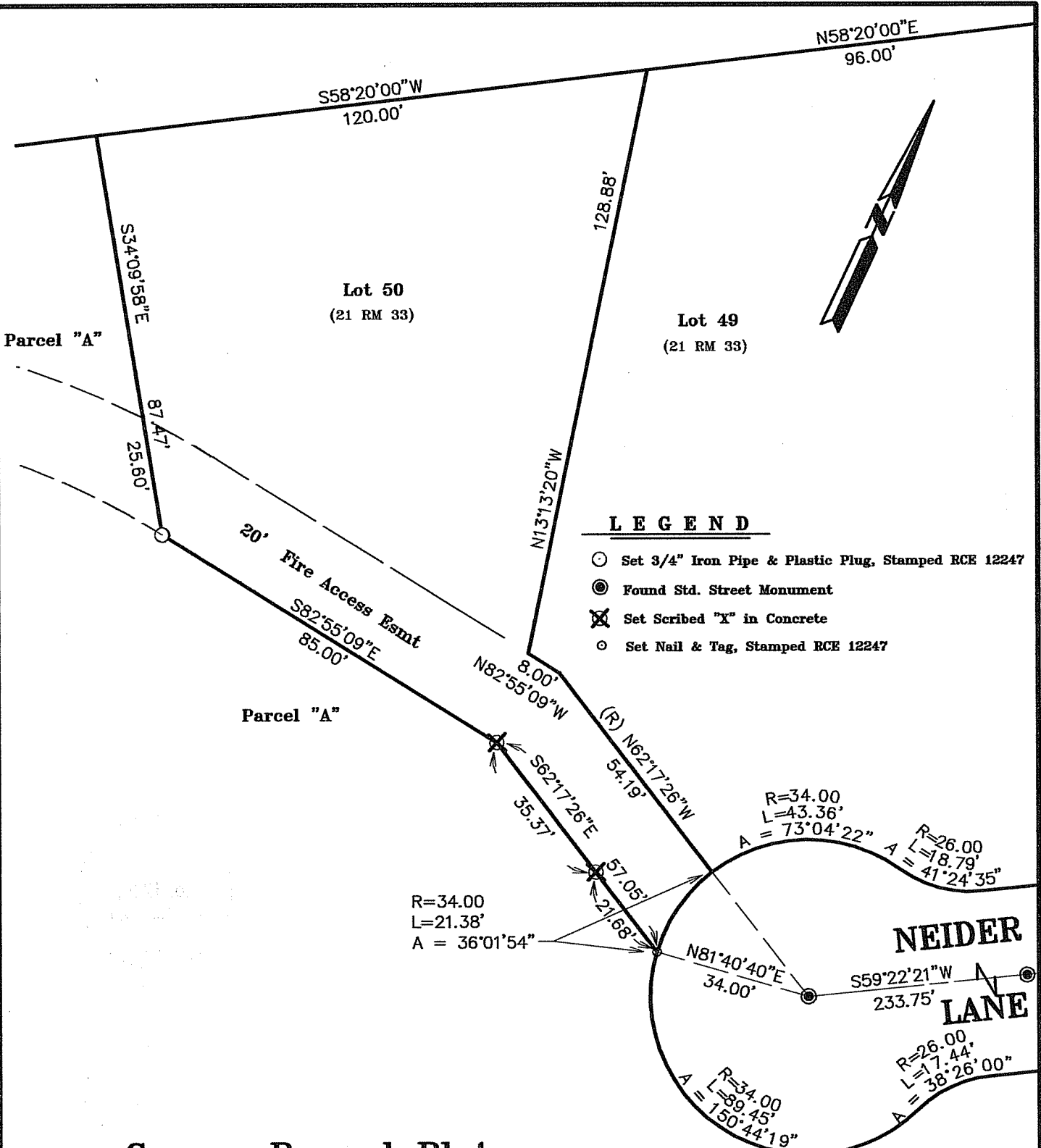
COUNTY SURVEYOR'S STATEMENT

This Corner Record was received 12-28-2000 19__ and examined and filed 1-3-2001 19__.

Signed [Signature] Title DEPUTY



County Surveyor's Comment _____



Corner Record Plat

of
 Lot 50, Map of "Strawberry Vista Subdivision"
 (21 RM 33)

Mill Valley Marin County California
 Scale: 1" = 30' November 2000

Arthur J. Lang Associates, Inc.

Civil Engineers, Land Surveyors, Structural Engineers
 7 Pamaron Way * Novato, CA 94947 (415) 883-3577