

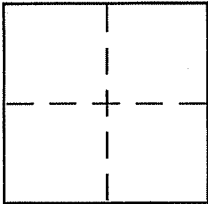
**CORNER RECORD**

Document Number 043-430-08

City of Mill Valley

County of MARIN, California

Brief Legal Description Lot 50, Map of "Strawberry Vista Subdivision, 21 RM 33"



**CORNER TYPE**

Government Corner  Control   
Meander  Property   
Rancho  Other   
Date of Survey 04-07-2000

**COORDINATES (Optional)**

N. \_\_\_\_\_  
E. \_\_\_\_\_  
Zone \_\_\_\_\_ NAD27  NAD83   
NAD83 Epoch \_\_\_\_\_  
Elev. \_\_\_\_\_  
Vert. Datum: NGVD29  NAVD88   
Meas. Units: Metric  Imperial

Corner - Left as found  Found and tagged  Established  Reestablished  Rebuilt

Identification and type of corner found: Evidence used to identify or procedure used to establish or reestablish the corner:

SEE PAGE 2 OF 2.

A description of the physical condition of the monument as found and as set or reset:

SEE PAGE 2 OF 2.

**SURVEYOR'S STATEMENT**

This Corner Record was prepared by me or under my direction in conformance with the Land Surveyor's Act on APRIL 14, 2000

Signed Arthur J. Lang or R.C.E. No. 12247

**COUNTY SURVEYOR'S STATEMENT**

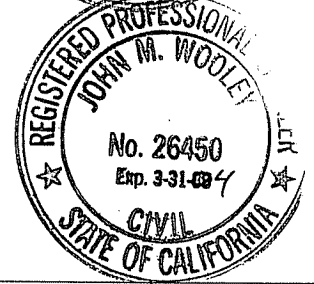
This Corner Record was received APRIL 17, 2000

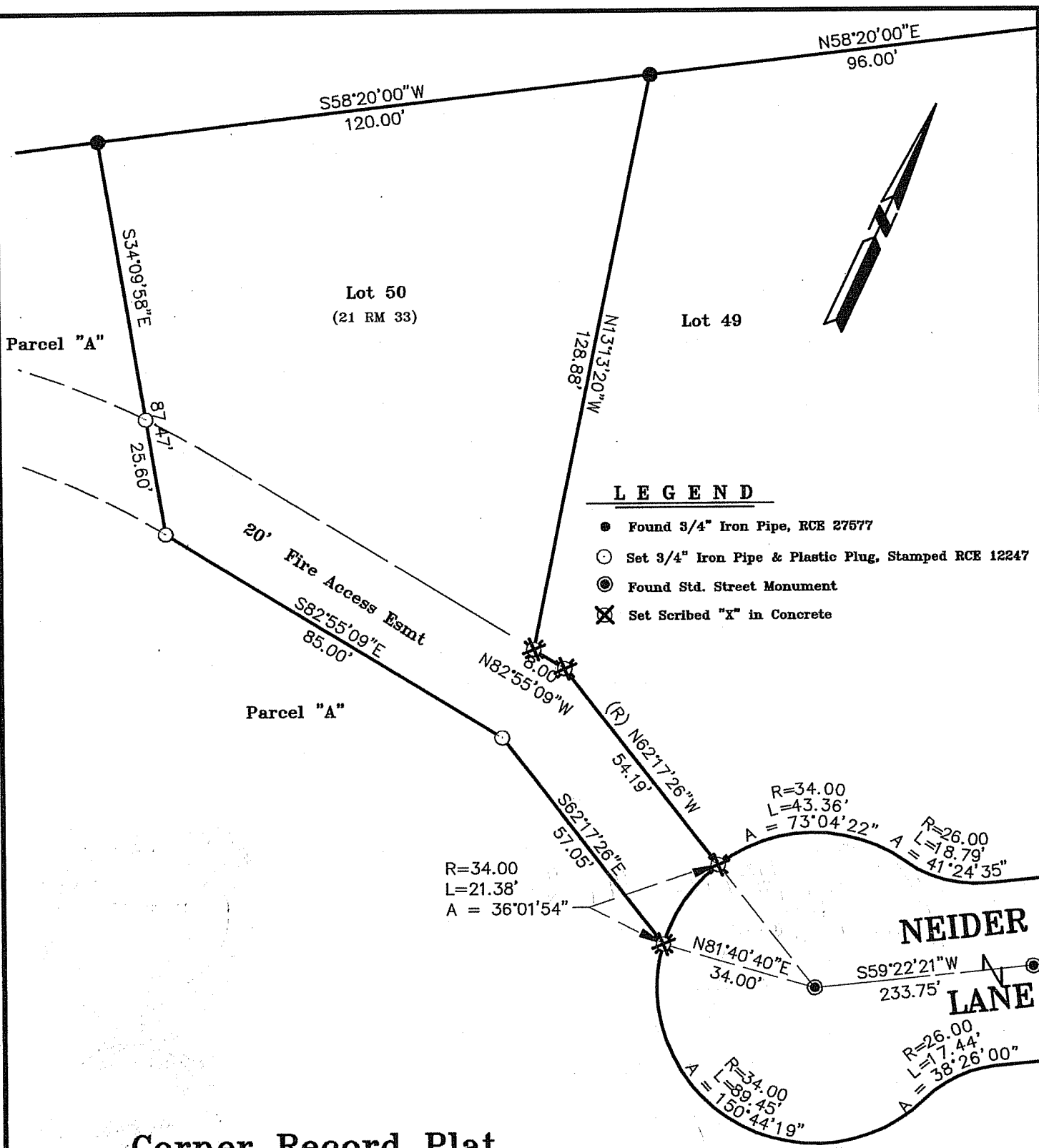
and examined and filed APRIL 18, 2000

Signed John M. Woolley P.L.S. or R.C.E. No. 26450

Title DEPUTY

County Surveyor's Comment \_\_\_\_\_





**LEGEND**

- Found 3/4" Iron Pipe, RCE 27577
- Set 3/4" Iron Pipe & Plastic Plug, Stamped RCE 12247
- ⊙ Found Std. Street Monument
- ⊗ Set Scribed "X" in Concrete

**Corner Record Plat**

of  
 Lot 50, Map of "Strawberry Vista Subdivision"  
 (21 RM 33)

Mill Valley Marin County California  
 Scale: 1" = 30' April 2000

**Arthur J. Lang Associates, Inc.**

Civil Engineers, Land Surveyors, Structural Engineers  
 7 Pamaron Way \* Novato, CA 94947 (415) 883-3577