

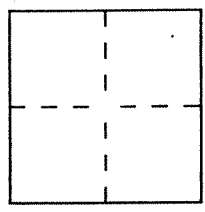
CORNER RECORD

Document Number A.P.N. 43-430-01#02

City of MILL VALLEY

County of MARIN, California

Brief Legal Description LOTS 43 & 44, MAP OF STRAWBERRY VISTA 21 RM 33



CORNER TYPE

- Government Corner
- Meander
- Rancho
- Date of Survey _____
- Control
- Property
- Other

COORDINATES (Optional)

N. _____
 E. _____
 Zone _____ Datum _____
 Elev. _____

Corner — Left as found Found and tagged Established Reestablished Rebuilt

Identification and type of corner found: Evidence used to identify or procedure used to establish or reestablish the corner:

SEE PAGE 2/2

A description of the physical condition of the monument as found and as set or reset:

SEE PAGE 2/2

SURVEYOR'S STATEMENT

This Corner Record was prepared by me or under my direction in conformance with the Land Surveyors' Act on 12/20/2000 19__.

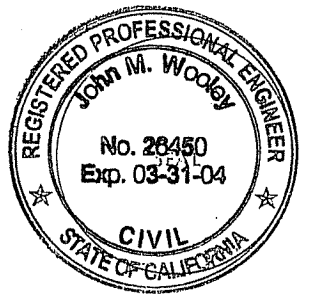
Signed Arthur J. Lang or R.C.E. Number 12 247



COUNTY SURVEYOR'S STATEMENT

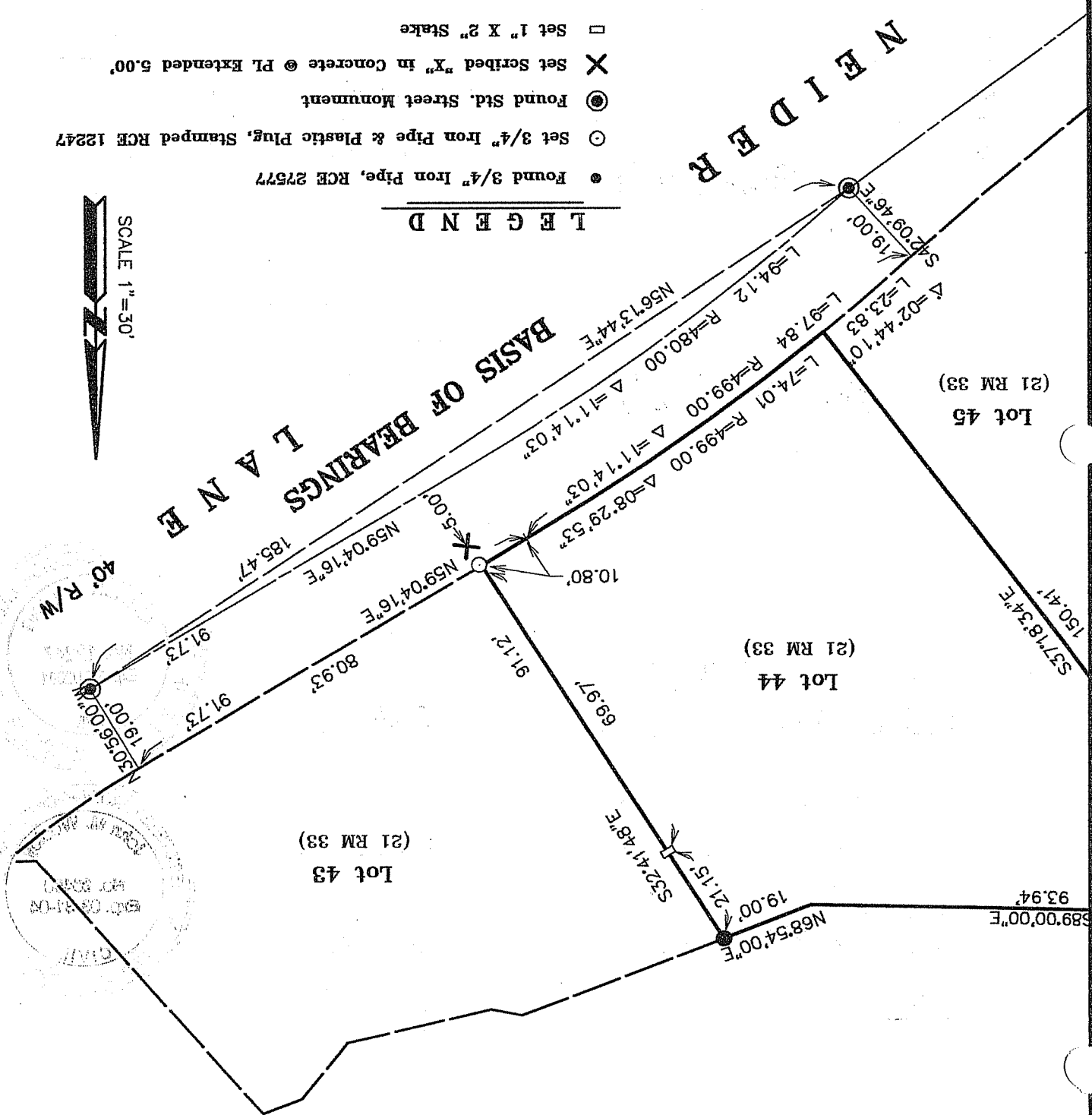
This Corner Record was received 12-28-2000 19__ and examined and filed 1-3-2001 19__.

Signed John M. Wooley Title DEPUTY



County Surveyor's Comment _____

All distances shown are in feet and decimals thereof



- LEGEND**
- Found 3/4" Iron Pipe, RCE 27577
 - Set 3/4" Iron Pipe & Plastic Plug, Stamped RCE 12247
 - ⊙ Found Std. Street Monument
 - ✕ Set Scribed "X" in Concrete @ Pl. Extended 5.00'
 - Set 1" X 2" Stake



Corner Record Plat
 of
 Lot 44, Map of "Strawberry Vista Subdivision"
 Marin Valley
 Marin County
 California
 November 2000

Arthur J. Lang Associates, Inc.
 Civil Engineers, Land Surveyors, Structural Engineers
 7 Pamaron Way * Novato, CA 94947 (415) 883-3577