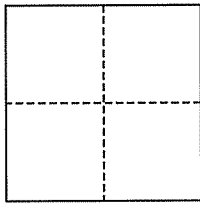


**CORNER RECORD**

Document Number AP # 43-410-17  
County of Marin, California

City of Mill Valley

Brief Legal Description Being Lot 56, 21-RM-33 (APN# 043-410-17)



**CORNER TYPE**

Government Corner  Control   
Meander  Property   
Rancho  Other   
Date of Survey \_\_\_\_\_

**COORDINATES (Optional)**

N. \_\_\_\_\_  
E. \_\_\_\_\_  
Zone \_\_\_\_\_ NAD27  NAD83   
NAD83 Epoch \_\_\_\_\_  
Elev. \_\_\_\_\_  
Vert. Datum: NGVD29  NAVD88   
Meas. Units: Metric  Imperial

**Corner-** Left as found  Found and tagged  Established  Reestablished  Rebuilt

Identification and type of corner found: Evidence used to identify or procedure used to establish or reestablish the corner:

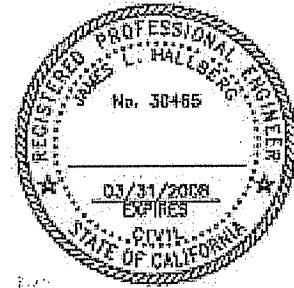
Found Monuments per 21-RM-33

A description of the physical condition of the monument as found and as set or reset: Set 3/4" Iron Pipe & Plug, Stamped R.C.E. 30465 as shown

**SURVEYOR'S STATEMENT**

This corner Record was prepared by me or under my direction in conformance with the Land Surveyor's Act on August 22, 2007

Signed [Signature] P.L.S. or R.C.E. No. 30465



**COUNTY SURVEYOR'S STATEMENT**

This Corner Record was received AUGUST 27, 2007 and examined and filed SEPTEMBER 19, 2007

Signed [Signature] P.L.S. or R.C.E. No. 7128

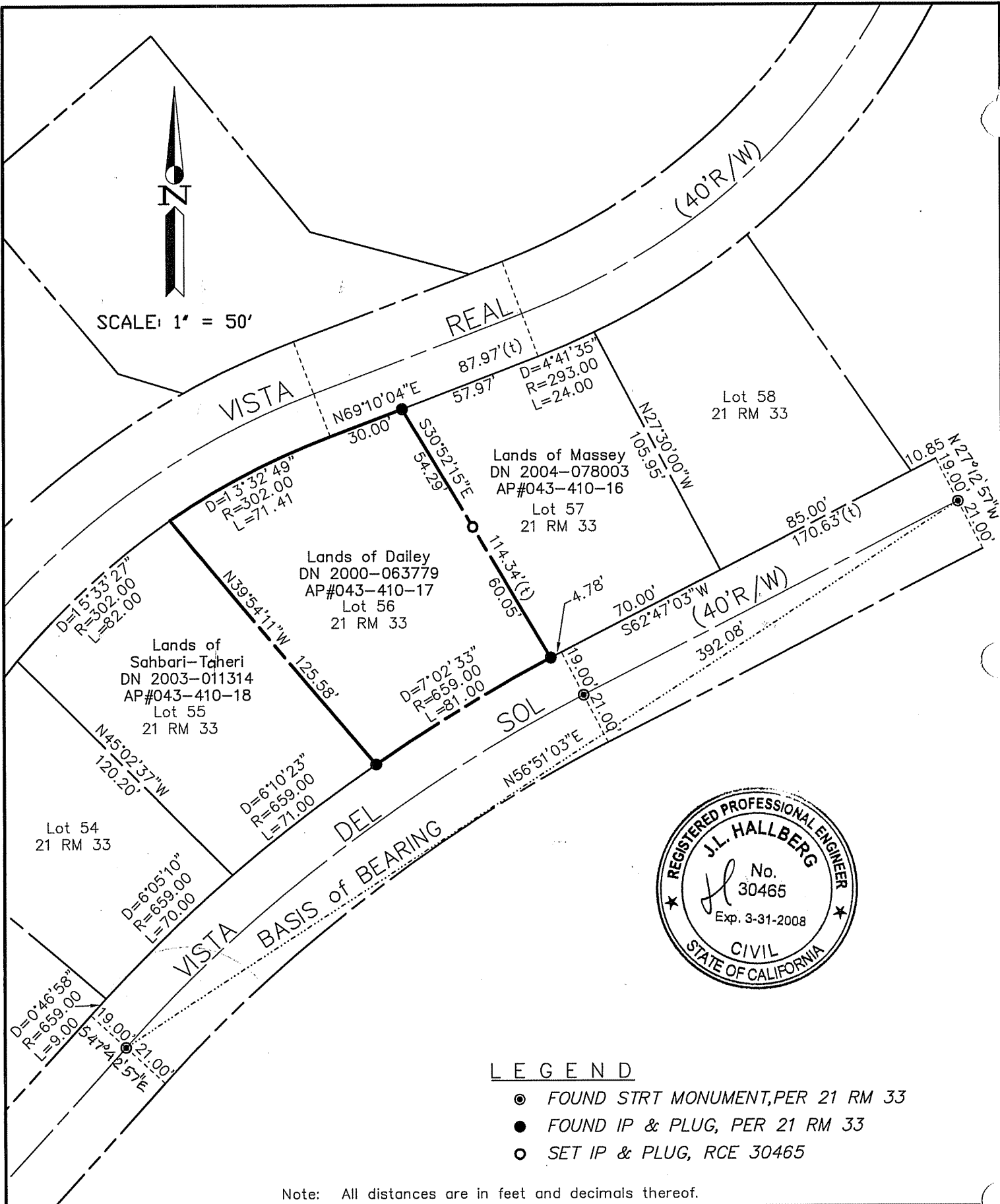
Title COUNTY SURVEYOR



**County Surveyor's Comment** \_\_\_\_\_



SCALE: 1" = 50'



**LEGEND**

- FOUND STRT MONUMENT, PER 21 RM 33
- FOUND IP & PLUG, PER 21 RM 33
- SET IP & PLUG, RCE 30465

Note: All distances are in feet and decimals thereof.

SHEET	1	OF	1
SCALE:	1" = 50'	DESIGN:	SDA
DATE:	Aug. 2007	DRAWN:	SDA
FILE:	2007-139	CHECKED:	J.L.H

**J.L. ENGINEERING**  
 CIVIL ENGINEERS-LAND SURVEYORS  
 1539 4th ST., SAN RAFAEL, CA. 94901 (415) 457-6647

**Corner Record**  
 Lands of DAILEY- 14 Vista Real  
 APN 043-410-17, Mill Valley, Marin County, CA