

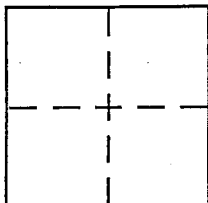
CORNER RECORD

Document Number 043-403-02

City of Mill Valley

County of MARIN, California

Brief Legal Description Lot 12 - 20 R.M. 84



CORNER TYPE

- Government Corner Control
- Meander Property
- Rancho Other
- Date of Survey _____

COORDINATES (Optional)

N. _____
 E. _____
 Zone _____ NAD27 NAD83
 NAD83 Epoch _____
 Elev. _____
 Vert. Datum: NGVD29 NAVD88
 Meas. Units: Metric Imperial

Corner - Left as found Found and tagged Established Reestablished Rebuilt

Identification and type of corner found: Evidence used to identify or procedure used to establish or reestablish the corner:

Used Subdivision Monuments as shown 20 R.M. 84
as control & Basis of bearings
Found rebar - RCE 13350 @ SW corner

A description of the physical condition of the monument as found and as set or reset:

Set corners / angle points as shown on back

SURVEYOR'S STATEMENT

This Corner Record was prepared by me or under my direction in conformance with the Land Surveyor's Act on April 8 2013

Signed Michael G. Brogan P.L.S or R.C.E. No. LS 5767



COUNTY SURVEYOR'S STATEMENT

This Corner Record was received APRIL 22, 2013

and examined and filed MAY 29, 2013

Signed [Signature] P.L.S or R.C.E. No. 7821

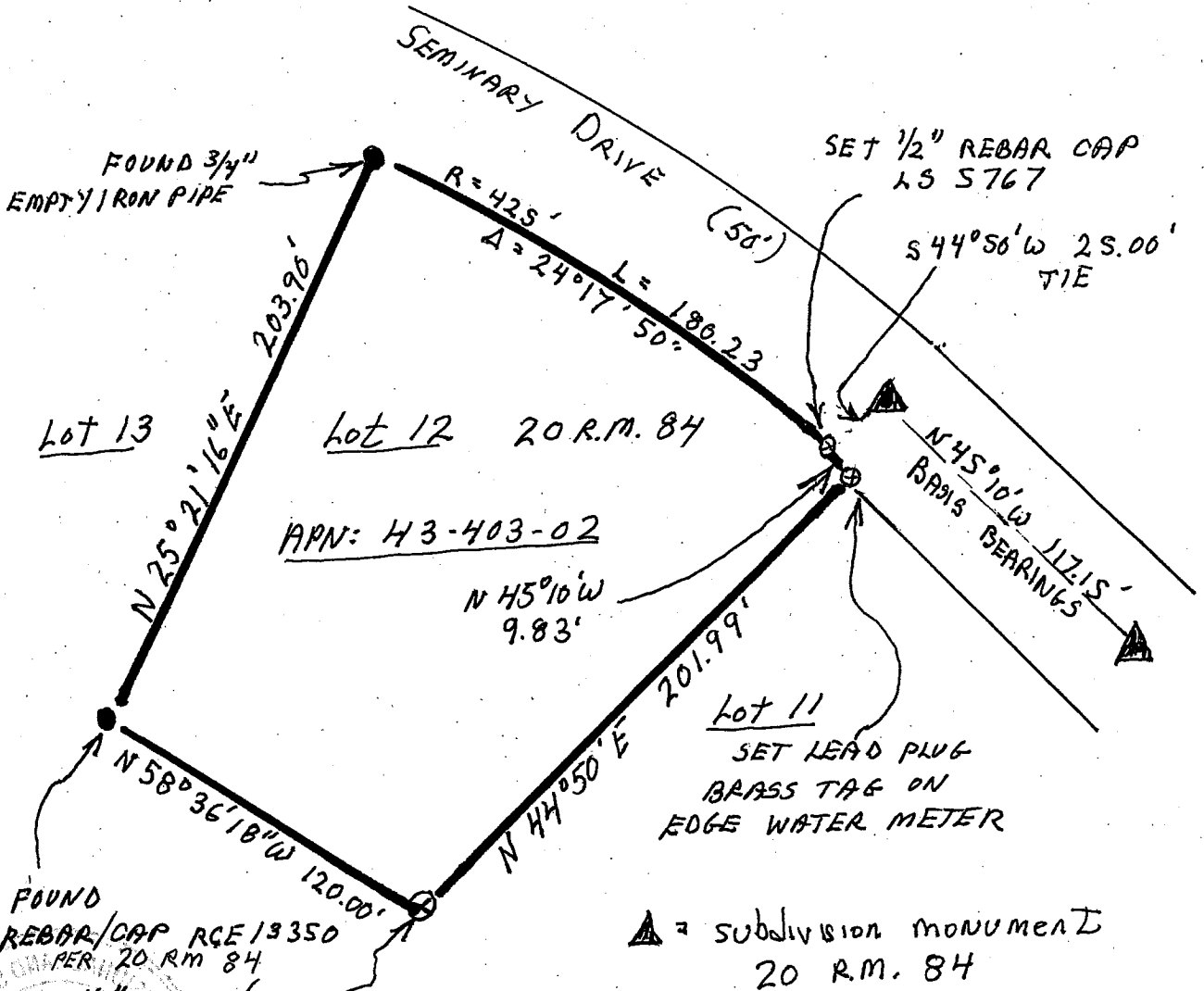
Title DEPUTY CO. SURVEYOR



County Surveyor's Comment _____

NORTH

NOT TO SCALE



FOUND 3/4" EMPTY IRON PIPE

Lot 13

Lot 12 20 R.M. 84

APN: 43-403-02

Lot 11

SET LEAD PLUG BRASS TAG ON EDGE WATER METER

FOUND REBAR/CAP RCE 13350 PER 20 R.M. 84

SET 1/2" REBAR/CAP AS 5767

▲ = subdivision monument 20 R.M. 84

