

CORNER RECORD

Document Number 043-403-01

City of Mill Valley

County of Marin, California

Brief Legal Description Lot 11, Seminary Ridge-Phase 1, 20 R.M. 84, M.C.R.



CORNER TYPE

Government Corner Control
Meaneder Property
Rancho Other
Date of Survey 3/27/13

COORDINATES (Optional)

N. _____
E. _____
Zone _____ NAD27 NAD83
NAD83 Epoch _____
Elev. _____
Vert. Datum: NGVD29 NAVD88
Meas. Units: Metric Imperial

Corner – Left as found Found and tagged Established Reestablished Rebuilt

Identification and type of corner found: Evidence used to identify or procedure used to establish or reestablish the corner:
Found centerline monuments in record position per 20 R.M. 84 were used to locate Lot 11 in said map. Existing monuments were found at all corners of said lot. Points on line were established on the northwest and southeast lines of said lot.

A description of the physical condition of the monument as found and as set or reset: N'ly cor: Brass Tag L.S.5767
W'ly cor: Rebar & Cap L.S. 5767 S'ly cor: Rebar & Cap L.S. 4870
E'ly cor: Rebar & Cap Illegible Points on line: 1/2" iron pipes L.S. 7237

SURVEYOR'S STATEMENT

This Corner Record was prepared by me or under my direction in conformance with the Land Surveyor's Act on MARCH 28 2013
Signed Michael E. Ford P.L.S. or R.C.E. No. 7237



COUNTY SURVEYOR'S STATEMENT

This Corner Record was received APRIL 1, 2013
and examined and filed MAY 7, 2013
Signed Richard G. Simonitch P.L.S. or R.C.E. No. 7821
Title DEPUTY COUNTY SURVEYOR



County Surveyor's Comment

NOTE:

ALL COURSES SHOWN HEREON ARE RECORD AND MEASURED PER SEMINARY RIDGE PHASE 1, 20 R.M. 84, M.C.R.

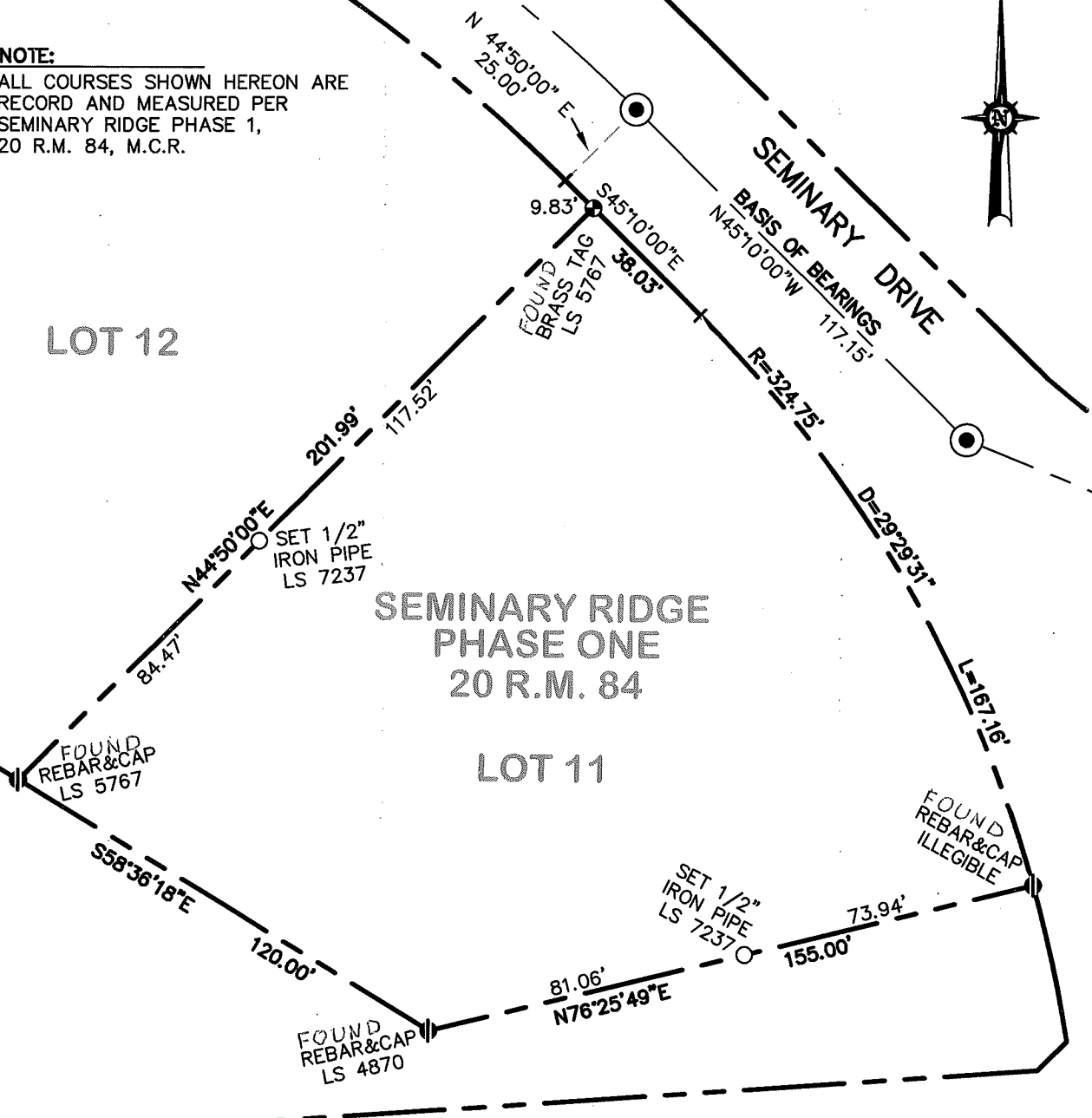


LOT 12

SEMINARY RIDGE
PHASE ONE
20 R.M. 84

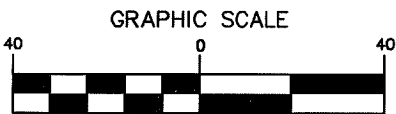
LOT 11

SEMINARY DRIVE
BASIS OF BEARINGS
N45°10'00"W



BASIS OF BEARINGS

N 45°10'00" W BETWEEN FOUND CENTERLINE MONUMENTS AS SHOWN ON SEMINARY RIDGE PHASE 1, 20 R.M. 84, MARIN COUNTY RECORDS.



(IN FEET)
1 inch = 40 ft.



2300 bethards drive, suite J

santa rosa, california 95405

p 707.542.8513 - f 707.542.1825

www.michaelfordinc.com