

(For County Use Only)

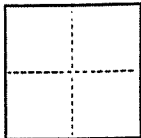
A.P. # 43-402-10

CORNER RECORD

COUNTY OF Marin T. 1N. R. 6W Mount Diablo MERIDIAN CALIFORNIA

CORNER TYPE: GOV'T. CORNER MEANDER RANCHO CONTROL OTHER

CORNER IDENTIFICATION — DATE OF VISIT November 6 1992



Lot 3 - Map of Seminary Ridge - Phase I (20 M 84)

A.P.N. # 43-402-10

CORNER — LEFT AS FOUND FOUND AND TAGGED REESTABLISHED OBLITERATED CORNER REBUILT

PHYSICAL DESCRIPTION OF CORNER FOUND; EVIDENCE AND METHOD USED TO IDENTIFY OR REESTABLISH

Used existing monuments per 20 M 84 to establish position for corner set on this survey.

PHYSICAL DESCRIPTION OF MONUMENTS REBUILT OR PERPETUATED

Set 5/8" rebar with cap (R.E. 31749)



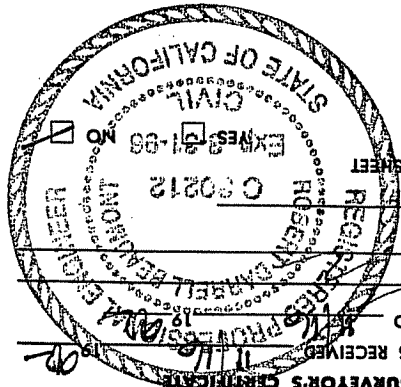
THIS CORNER RECORD WAS PREPARED BY ME OR UNDER MY
 DIRECTION IN CONFORMANCE WITH THE LAND SURVEYORS ACT
 OF 1907, CHAPTER 11, SECTION 11.92

SIGNED: *Michael J. Helmer*

L.S. or R.C.E. No. 31749

No. 31749

SEAL



COUNTY SURVEYOR'S CERTIFICATE

THE CORNER RECORD WAS RECEIVED BY ME AND EXAMINED AND FILED

BY: *Rosemary Bell*

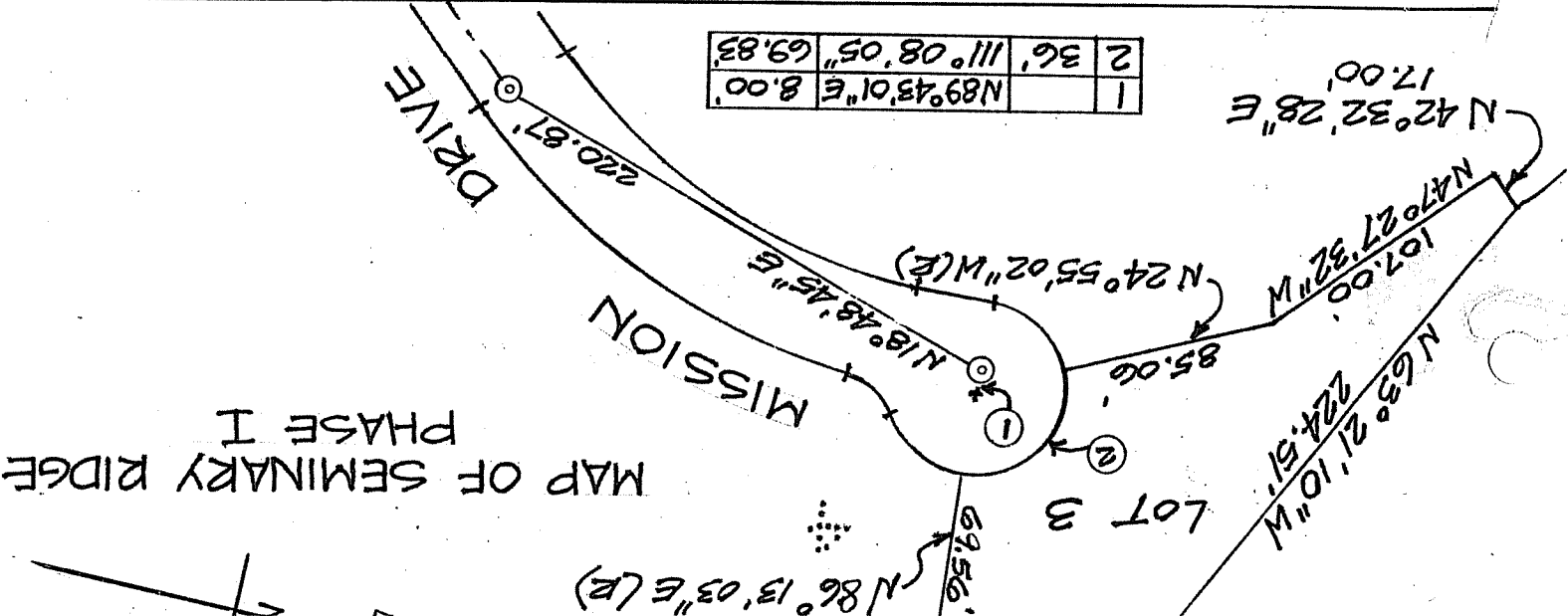
TITLE: _____

DOCUMENT No. _____

STATEMENT ON BACK OF SHEET

SURVEYOR'S CERTIFICATE

1	N89°43'01" E	8.00'
2	36' 11" 08.05" W	69.83'



MAP OF SEMINARY RIDGE
 PHASE I

MISSION DRIVE

LOT 3

N86°13'03" E (R)
 69.56'

N42°32'28" E
 17.00'

N47°27'32" W
 107.00'

N63°21'10" W
 224.51'

N24°55'02" W (L)
 85.06'

N18°48'45" E
 85.06'

220.87'