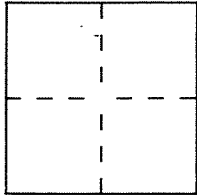


CORNER RECORD

Document Number 43-402-07

City of MILL VALLEY County of MARIN, California

Brief Legal Description NW COR LOT 6 - SEMINARY RIDGE - 20 RM 84



CORNER TYPE

Government Corner Control
Meander Property
Rancho Other
Date of Survey 11-7-94

COORDINATES
(Optional)

N. _____
E. _____
Zone _____ Datum _____
Elev. _____

Corner — Left as found Found and tagged Established Reestablished Rebuilt

Identification and type of corner found: Evidence used to identify or procedure used to establish or reestablish the corner:

RECOVERED STANDARD STREET MONUMENTS AND NORTHWEST CORNER OF LOT 6 PER BOOK 20 OF RECORD MAPS, PAGE 84 TO REESTABLISH THE SOUTHWEST CORNER OF LOT 6 AS SHOWN ON SKETCH ON REVERSE SIDE.

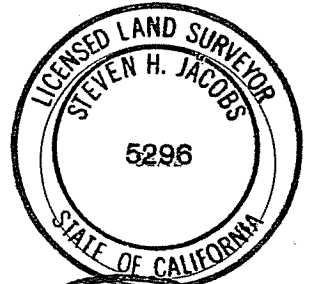
A description of the physical condition of the monument as found and as set or reset: SET 3/4" IRON PIPE TAGGED P.L.S. 5296 - 1.4 FEET BEHIND BACK OF SIDEWALK AT NORTHWEST CORNER OF LOT 6

AP# 43-402-07

SURVEYOR'S STATEMENT

This Corner Record was prepared by me or under my direction in conformance with the Land Surveyors' Act on NOVEMBER 9, 1994.

Signed Steven H. Jacobs L.S. or R.C.E. Number P.L.S. 5296



COUNTY SURVEYOR'S STATEMENT

This Corner Record was received NOVEMBER 14 1994 and examined and filed 11-14- 1994.

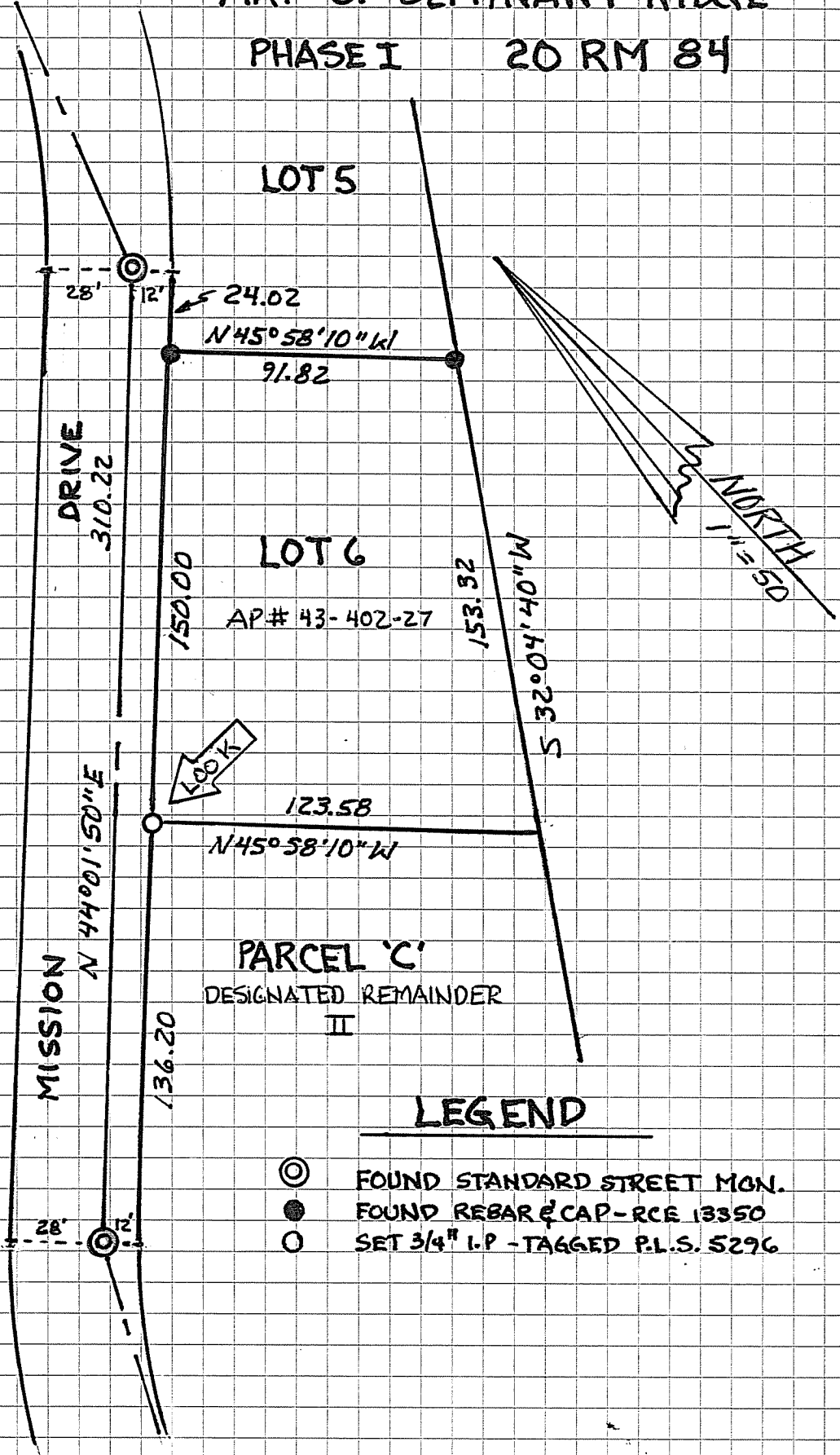
Signed Richard A. Carlsen Title Deputy County Surveyor



County Surveyor's Comment _____

MAP OF SEMINARY RIDGE
 PHASE I 20 RM 84

LOT 5



LOT 6

AP# 43-402-27

PARCEL 'C'

DESIGNATED REMAINDER II

LEGEND

- ⊙ FOUND STANDARD STREET MON.
- FOUND REBAR & CAP - RCE 13350
- SET 3/4" I.P. - TAGGED P.L.S. 5296