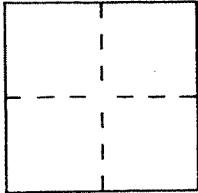


# CORNER RECORD

Document Number A.P.N. 043-390-11

City of Mill Valley County of Marin, California

Brief Legal Description Lot 18 Strawberry Point Subdivision 20 RM 16



### CORNER TYPE

Government Corner  Control   
 Meander  Property   
 Rancho  Other   
 Date of Survey Oct. 22, 2003

### COORDINATES (Optional)

N. \_\_\_\_\_  
 E. \_\_\_\_\_  
 Zone \_\_\_\_\_ Datum \_\_\_\_\_  
 Elev. \_\_\_\_\_

Corner — Left as found  Found and tagged  Established  Reestablished  Rebuilt

Identification and type of corner found: Evidence used to identify or procedure used to establish or reestablish the corner:

Found standard street monuments on Egret Way per 20 RM 16.

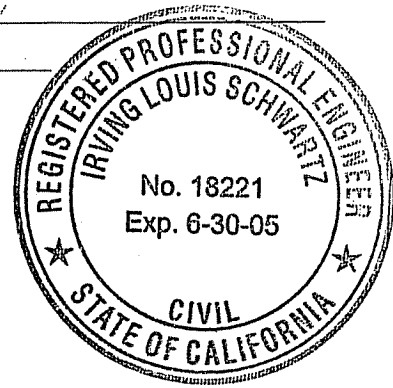
A description of the physical condition of the monument as found and as set or reset:

Set 3/4" I.P. and tag RCE 18221 unless shown otherwise on Exhibit A.

### SURVEYOR'S STATEMENT

This Corner Record was prepared by me or under my direction in conformance with the Land Surveyors' Act on OCTOBER 24, 2003

Signed [Signature] LS or R.C.E. Number 18221



### COUNTY SURVEYOR'S STATEMENT

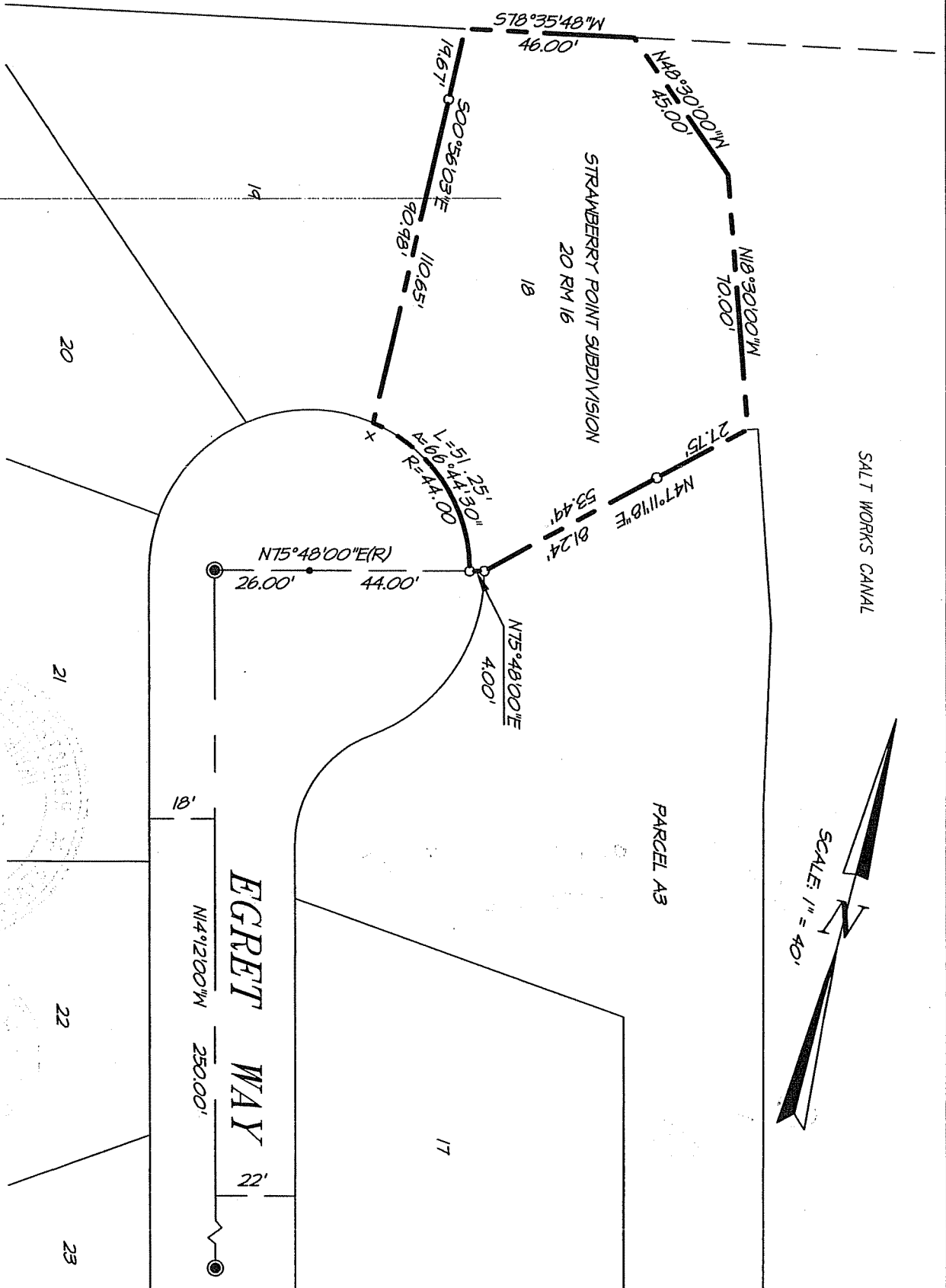
This Corner Record was received OCTOBER 27, 2003 and examined and filed NOVEMBER 10, 2003

Signed [Signature] Title COUNTY SURVEYOR



County Surveyor's Comment \_\_\_\_\_  
 \_\_\_\_\_  
 \_\_\_\_\_  
 \_\_\_\_\_

NAVIGATION EASEMENT/CHANNEL



SALT WORKS CANAL

PARCEL A3

STRAWBERRY POINT SUBDIVISION  
20 RM 16

EGRET WAY

EXHIBIT "A"

LEGEND

- FOUND STANDARD STREET MONUMENT
- ⊗ FOUND "x" @ TC ON PL EXTENDED
- SET 3/4" IRON PIPE & TAG "R.C.E. 10221"
- UNLESS NOTED OTHERWISE

NOTE:

ALL DIMENSIONS SHOWN HEREON ARE PER 20 RM 16 UNLESS OTHERWISE NOTED.

A.P.N. 043-039-11



**ILS ASSOCIATES, INC.**  
CIVIL ENGINEERING AND LAND SURVEYING

70 GULL DRIVE, SUITE A, NOVATO, CA 94948-5170 (415)983-8800 FAX (415)983-8783

DATE: 10/23/03  
FILE: 7570CCOR.DWG