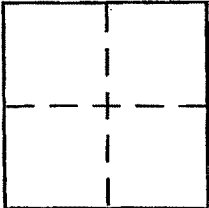


CORNER RECORD

Document Number APN 043-390-01
City of UNINCORPORATED County of MARIN, California

Brief Legal Description PORTION OF LINE BETWEEN LOTS 28/29, 20 MAPS 16



CORNER TYPE

Government Corner Control
Meander Property
Rancho Other
Date of Survey _____

COORDINATES (Optional)

N. _____
E. _____
Zone _____ NAD27 NAD83
NAD83 Epoch _____
Elev. _____
Vert. Datum: NGVD29 NAVD88
Meas. Units: Metric Imperial

Corner - Left as found Found and tagged Established Reestablished Rebuilt

Identification and type of corner found: Evidence used to identify or procedure used to establish or reestablish the corner:

SEE SKETCH PAGE 2 OF 2

A description of the physical condition of the monument as found and as set or reset:

SEE SKETCH PAGE 2 OF 2

SURVEYOR'S STATEMENT

This Corner Record was prepared by me or under my direction in conformance with the Land Surveyor's Act on AUGUST 5, 2000

Signed [Signature] P.L.S. or R.C.E. No. 5102



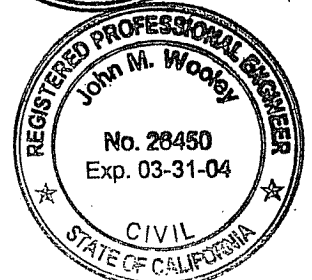
COUNTY SURVEYOR'S STATEMENT

This Corner Record was received 10-25-2000

and examined and filed 10-25-2000

Signed [Signature] P.L.S. or R.C.E. No. 26450

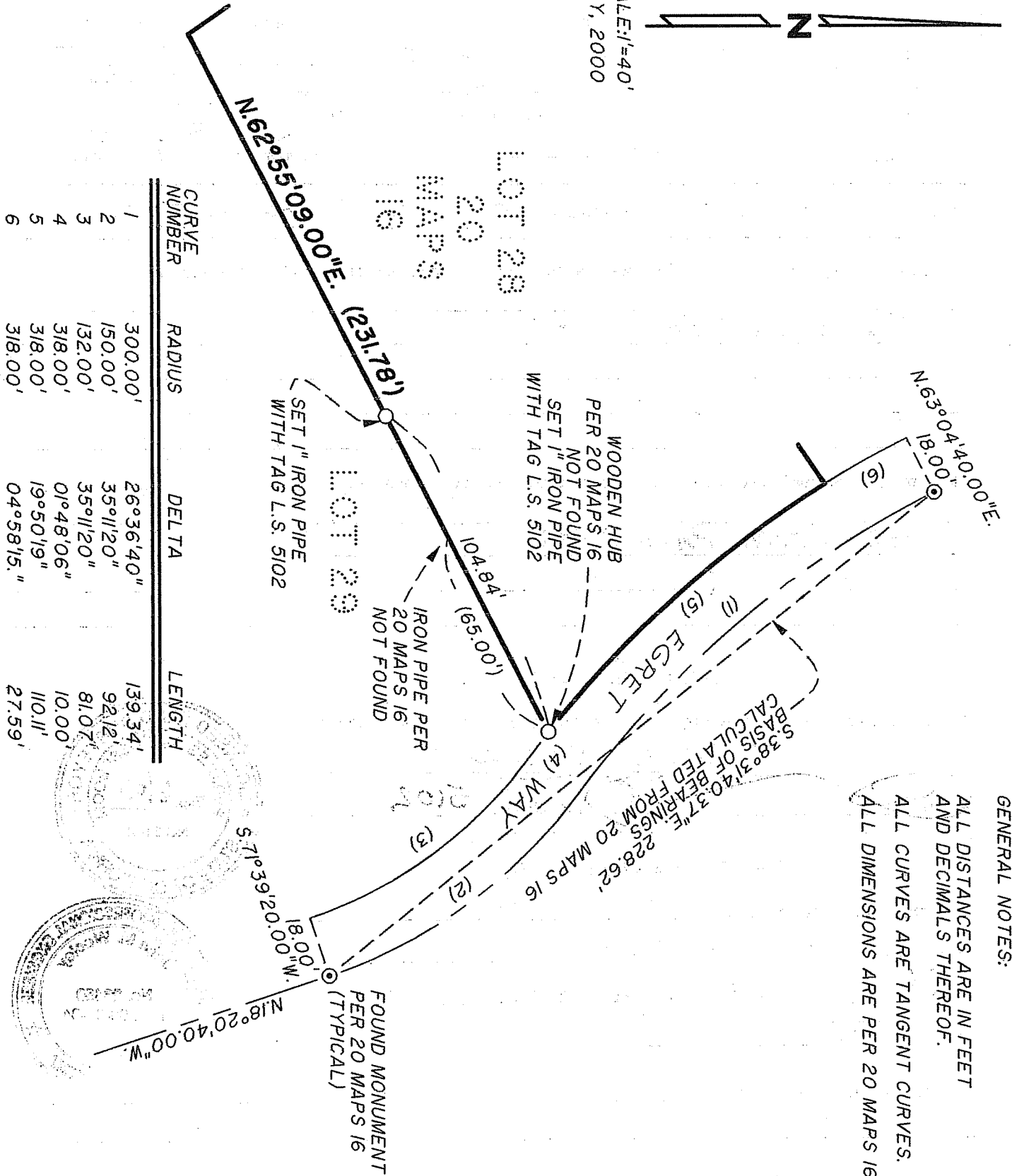
Title DEPUTY



County Surveyor's Comment _____



SCALE: 1"=40'
JULY, 2000



CURVE NUMBER	RADIUS	DELTA	LENGTH
1	300.00'	26°36'40"	139.34'
2	150.00'	35°11'20"	92.12'
3	132.00'	35°11'20"	81.07'
4	318.00'	01°48'06"	10.00'
5	318.00'	19°50'19"	110.11'
6	318.00'	04°58'15"	27.59'

GENERAL NOTES:
ALL DISTANCES ARE IN FEET AND DECIMALS THEREOF.
ALL CURVES ARE TANGENT CURVES.
ALL DIMENSIONS ARE PER 20 MAPS 16.

