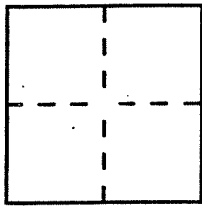


CORNER RECORD

Document Number APN 43-383-01

City of MILL VALLEY County of MARIN, California

Brief Legal Description LOT 42, 20 RM 16



CORNER TYPE

Government Corner  Control   
Meander  Property   
Rancho  Other   
Date of Survey \_\_\_\_\_

COORDINATES (Optional)

N. \_\_\_\_\_  
E. \_\_\_\_\_  
Zone \_\_\_\_\_ Datum \_\_\_\_\_  
Elev. \_\_\_\_\_

Corner — Left as found  Found and tagged  Established  Reestablished  Rebuilt

Identification and type of corner found: Evidence used to identify or procedure used to establish or reestablish the corner:

USED MONUMENTS FOUND IN ESBET WAY  
TO SET POINT AS NOTED

A description of the physical condition of the monument as found and as set or reset:

SEE DESCRIPTION ON PAGE 2

SURVEYOR'S STATEMENT

This Corner Record was prepared by me or under my direction in conformance with the Land Surveyors' Act on JAN. 2000

Signed [Signature] or R.C.E. Number RCE 12247

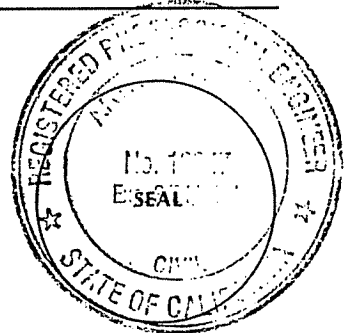
COUNTY SURVEYOR'S STATEMENT

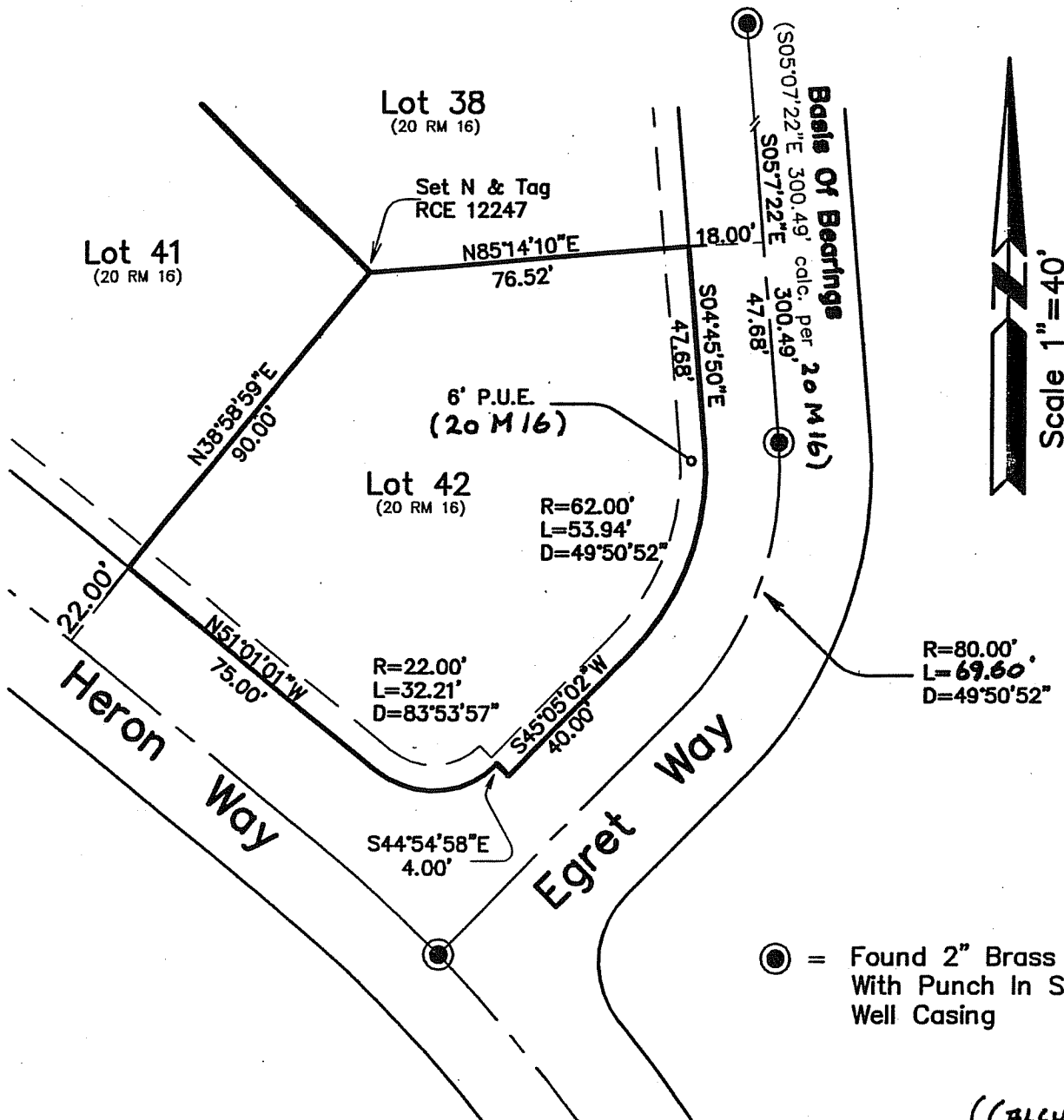
This Corner Record was received 2-16-2000 and examined

and filed 2016 2000

Signed [Signature] Title DEPUTY

County Surveyor's Comment \_\_\_\_\_





R=80.00'  
L=69.60'  
D=49°50'52"

● = Found 2" Brass Disk  
With Punch In Standard  
Well Casing

(CALCULATED)

Note: Distances shown hereon are  
in feet and decimals thereof.

Note: Property Lines shown hereon  
are based upon a field survey performed  
on January 22, 2000 and is based upon  
found centerline monuments and record  
information as shown on 20 M 16, M.C.R.

BASIS OF BEARINGS:  $S05^{\circ}07'22''E$  between  
found centerline monuments on Egret Way as  
shown on that certain map entitled "Map Of  
Strawberry Point" recorded in Book 20 of  
Maps at Page 16, Marin County Records.

**Lands of Feerer**

(Lot 42, 20 RM 16)

Mill Valley Marin County California  
Scale: 1" = 40' January 2000

**Arthur J. Lang Associates, Inc.**

Civil Engineer \* Land Surveying  
7 Pamaron Way. \* Novato, CA 94947