

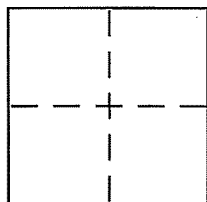
CORNER RECORD

Document Number APN 43-370-08

City of MILL VALLEY

County of MARIN, California

Brief Legal Description LO5 55,20 R.M. 16 APN 043-370-08



CORNER TYPE

Government Corner Control
Meander Property
Rancho Other
Date of Survey JUNE 19, 2009

COORDINATES (Optional)

N. _____
E. _____
Zone _____ NAD27 NAD83
NAD83 Epoch _____
Elev. _____
Vert. Datum: NGVD29 NAVD88
Meas. Units: Metric Imperial

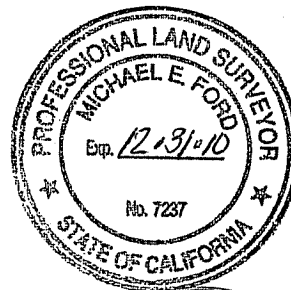
Corner - Left as found Found and tagged Established Reestablished Rebuilt

Identification and type of corner found: Evidence used to identify or procedure used to establish or reestablish the corner:
FOUND CENTERLINE MONUMENTS IN HERON DRIVE. RECORD BEARINGS AND DISTANCES USED TO REESTABLISH LOT LINES

A description of the physical condition of the monument as found and as set or reset:
SET 1/2" IRON PIPE TAGGED LS7237 ON PROPERTY LINES AT OPEN SPACE EASEMENT LINE

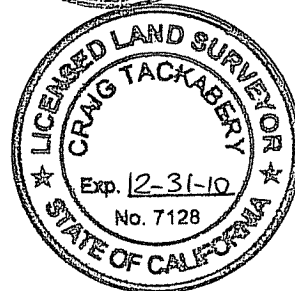
SURVEYOR'S STATEMENT

This Corner Record was prepared by me or under my direction in conformance with the Land Surveyor's Act on JUNE 16, 2009
Signed Michael E. Ford (P.L.S or R.C.E. No. 7237)



COUNTY SURVEYOR'S STATEMENT

This Corner Record was received JULY 31, 2009
and examined and filed SEPTEMBER 9, 2009
Signed _____ (P.L.S or R.C.E. No. 7128)
Title COUNTY SURVEYOR



County Surveyor's Comment _____

LEGEND

- ⊙ FOUND CENTERLINE MONUMENT
- FOUND BRASS TAG LS 7053 IN TOP OF CATCH BASIN
- SET 1/2" IRON PIPE LS 7237

$D=16'16''00''$
 $R=400.00'$
 $L=113.56$

BASIS OF BEARINGS

BETWEEN CENTERLINE MONUMENTS ON
 HERON DRIVE, $N16'53''00''W$ 542.25',
 CALCULATED.

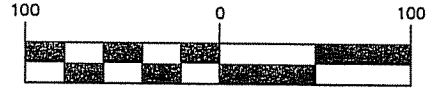
$D=6'00''00''$
 $R=1000.00'$
 $L=104.72'$

$N66'35''10''E$ 3.66'

FND SCRIBED "X" IN TC

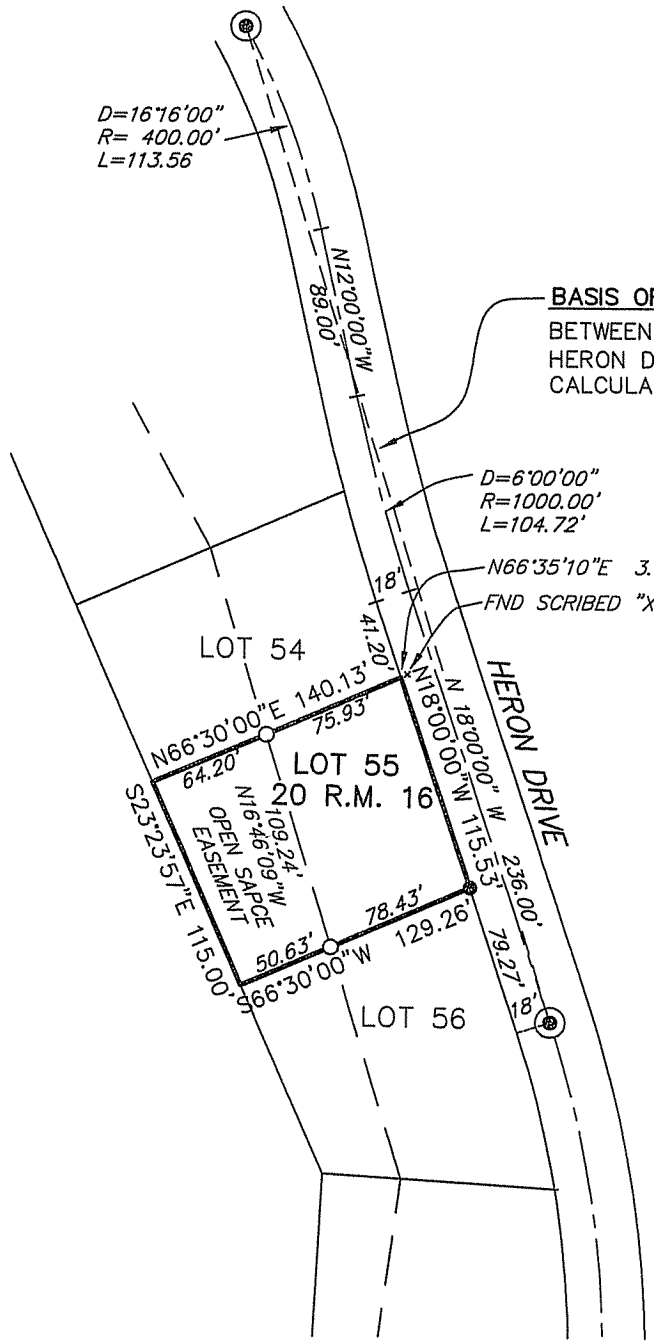


GRAPHIC SCALE



(IN FEET)

1 inch = 100 ft.



BOUNDARY SURVEY
 LOT 55, 20 RECORD MAPS, PAGE 16 M.C.R.
 25 HERON DRIVE, MILL VALLEY
 A.P.N. 043-370-08

JOB #091833



8910 sonoma hwy suite 12b

po box 1243, kenwood, ca 95452

p 707.833.6468 - f 707.833.5744

www.michaelfordinc.com

DATE: 6/19/09