

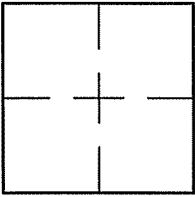
CORNER RECORD

Document Number A.P. 043-370-04

City of MILL VALLEY

County of MARIN, California

Brief Legal Description LOT 59 PER 20 R.M. 16



CORNER TYPE

COORDINATES (Optional)

Government Corner Control
 Meander Property
 Rancho Other
 Date of Survey 9/14/2011

N. _____
 E. _____
 Zone _____ NAD27 NAD83
 NAD83 Epoch _____
 Elev. _____
 Vert. Datum: NGVD29 NAVD88
 Meas. Units: Metric Imperial

Corner- Left as found Found and tagged Established Reestablished Rebuilt

Identification and type of corner found: Evidence used to identify or procedure used to establish or reestablish the corner:

REESTABLISHED LOT 59 USING THE FOUND STREET MONUMENTS PER 20 R.M. 16 AND THE CORNER RECORD
PREPARED BY ILS ASSOCIATES FOR A.P. 43-370-04.

A description of the physical condition of the monument as found and as set or reset: SEE SHEET 2.

SURVEYOR'S STATEMENT

This Corner Record was prepared by me or under my direction in conformance with

the Land Surveyor's Act on SEPTEMBER 15, 2011

Signed Lawrence P. Doyle P.L.S. or R.C.E. No. P.L.S. 4694



COUNTY SURVEYOR'S STATEMENT

This Corner Record was received JANUARY 20, 2012

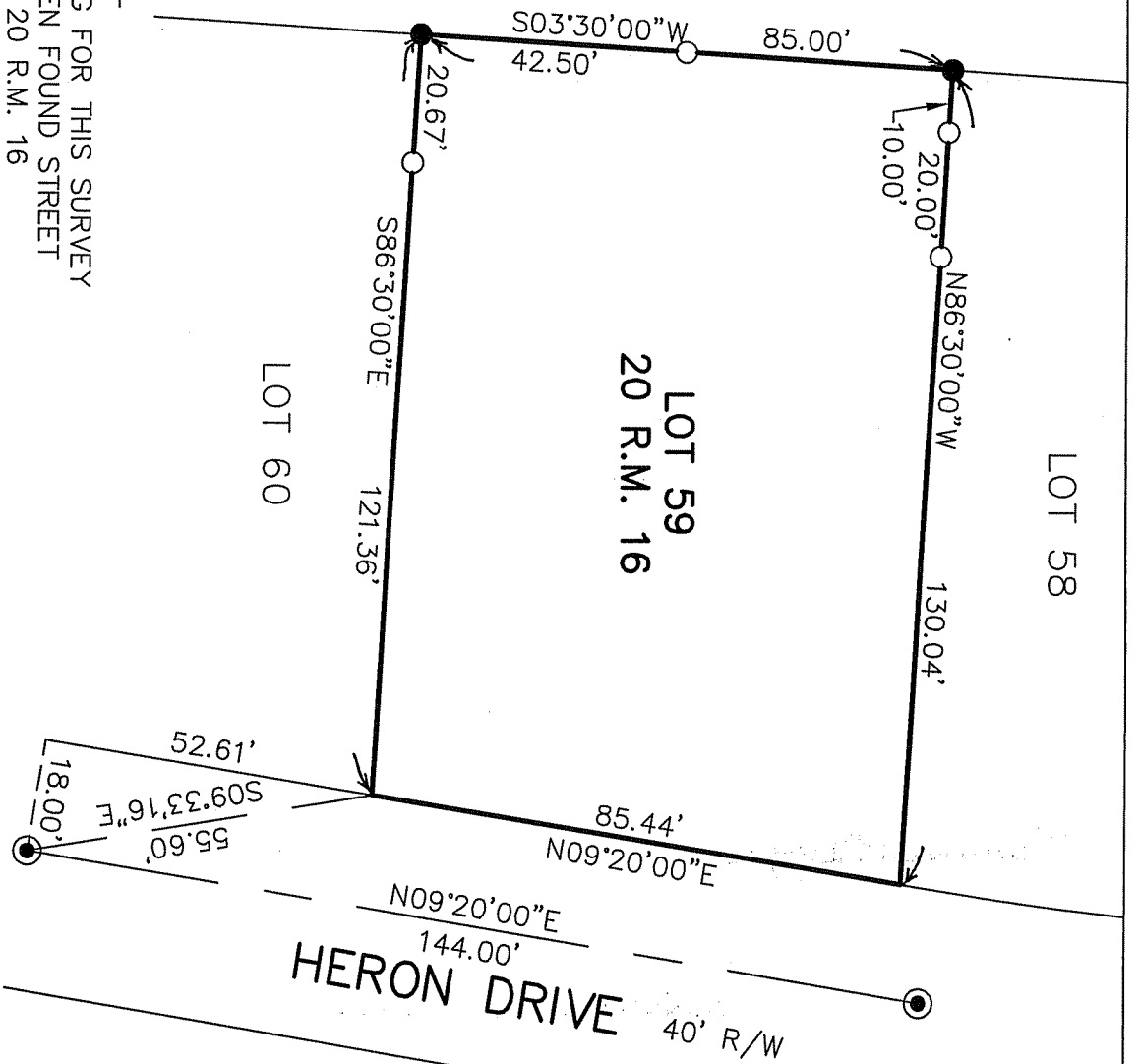
and examined and filed FEBRUARY 15, 2012

Signed [Signature] P.L.S. or R.C.E. No. 7128

Title COUNTY SURVEYOR



County Surveyor's Comment _____



BASIS OF BEARING

THE BASIS OF BEARING FOR THIS SURVEY IS N09°20'00"W BETWEEN FOUND STREET ON HERON DRIVE PER 20 R.M. 16

LEGEND

- FOUND STREET MONUMENT
- FOUND PIPE & PLUG, R.C.E. 18221
- SET PIPE & PLUG, L.S. 4694

LOT 58

LOT 59
20 R.M. 16

LOT 60

HERON DRIVE
40' R/W



CORNER RECORD	
LOT 59, 20 R.M. 16	
MILL VALLEY	CALIFORNIA
MILL VALLEY MARIN COUNTY	
SCALE: 1" = 30'	DRAWN BY:
DATE: 9/15/11	SHEET 2 OF 2
LAWRENCE P. DOYLE	
LAND SURVEYOR/CIVIL ENGINEER	
100 HELENS LANE	(415-388-9585)
MILL VALLEY CA 94941	
DRAWING NO.	2165-11