

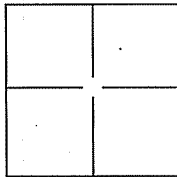
CORNER RECORD

Document Number A.P.N. 043-370-04

City of Mill Valley

County of Marin, California

Brief Legal Description Lot 59, Map of Strawberry Point, 33 Heron Drive, 20 RM 16.



CORNER TYPE

Government Corner Control
 Meander Property
 Rancho Other

Date of Survey 20 June 2011

COORDINATES(Optional)

N. _____
 E. _____
 Zone _____ NAD27 NAD83
 NAD83 Epoch _____
 Elev. _____
 Vert. Datum: NGVD29 NADV88
 Meas. Units: Metric Imperial

Corner - Left as found Found and tagged Established Reestablished Rebuilt

Identification and type of corner found: Evidence used to identify or procedure used to establish or reestablish the corner:

Found Standard Street Monuments (2) per 20 RM 16.

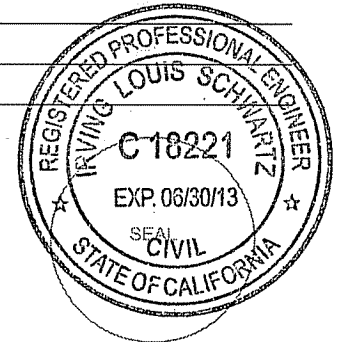
A description of the physical condition of the monument as found and as set or reset:

Set NW and SW corners (2 corners) on Lot 59, See Exhibit "A".

SURVEYOR'S STATEMENT

This Corner Record was prepared by me or under my direction in conformance with the Land Surveyor's Act on JULY 20, 2011

Signed [Signature] P.L.S. or R.C.E. No.: 18221



COUNTY SURVEYOR'S STATEMENT

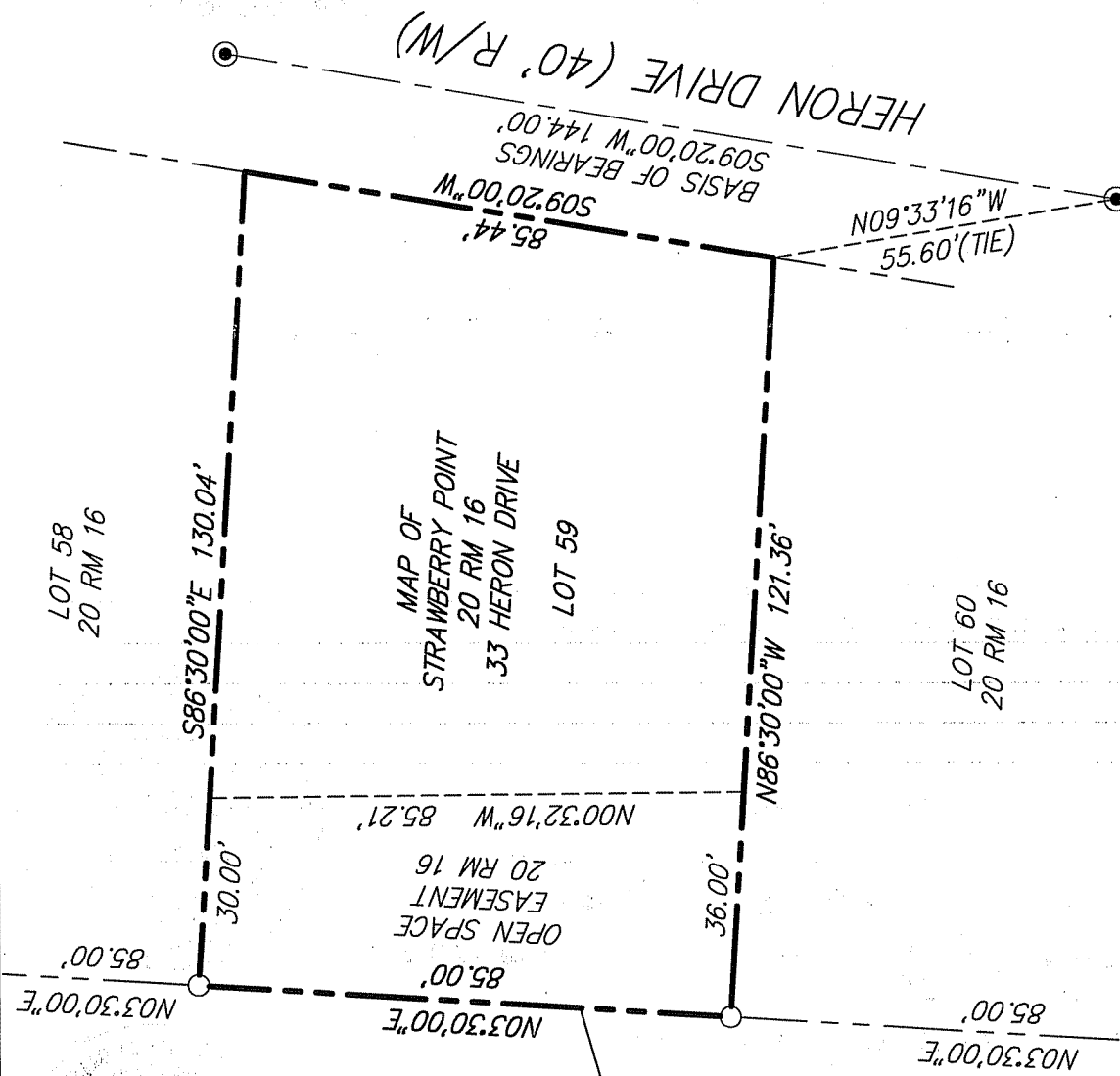
This Corner Record was received JULY 21, 2011 and examined and filed JULY 26, 2011

Signed [Signature] P.L.S. or R.C.E. No.: 7128

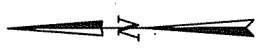
Title COUNTY SURVEYOR

County Surveyor's Comment _____





SCALE: 1"=30'



LEGEND

- SET 3/4" IRON PIPE & YELLOW CAP
"R.C.E. 18221"
- FOUND STANDARD STREET MONUMENT
PER 20 RM 16

EXHIBIT "A"

ILS ASSOCIATES, INC.®
 CIVIL ENGINEERING AND LAND SURVEYING
 79 GALLI DRIVE, SUITE A NOVATO, CA 94949-5717 (415)883-9200 FAX (415)883-2763

NOTE:
 ALL DIMENSIONS AND BEARINGS
 SHOWN HEREON ARE PER 20 RM 16.
 DATE: 06/21/2011
 FILE: 8355CR.dwg
 PAGE 2 OF 2

A.P.N. 043-370-04