

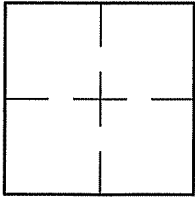
CORNER RECORD

Document Number A.P. 043-293-66

City of MILL VALLEY

County of MARIN, California

Brief Legal Description PARCEL 2 PER 14 P.M. 55



CORNER TYPE

Government Corner Control

Meander Property

Rancho Other

Date of Survey 12/30/2010

COORDINATES (Optional)

N. _____
E. _____

Zone _____ NAD27 NAD83
NAD83 Epoch _____

Elev. _____
Vert. Datum: NGVD29 NAVD88
Meas. Units: Metric Imperial

Corner- Left as found Found and tagged Established Reestablished Rebuilt

Identification and type of corner found: Evidence used to identify or procedure used to establish or reestablish the corner:
REESTABLISHED THE NORTHERLY BOUNDARY LINE OF PARCEL 2 USING THE STREET MONUMENTS SHOWN ON 14 P.M. 55, 9 R.M. 55, A CORNER RECORD FOR A.P. 043-293-51, AND AS SHOWN ON SHEET 2.

A description of the physical condition of the monument as found and as set or reset: SEE SHEET 2.

SURVEYOR'S STATEMENT

This Corner Record was prepared by me or under my direction in conformance with

the Land Surveyor's Act on DECEMBER 25, 2010

Signed Lawrence P Doyle P.L.S. or R.C.E. No. P.L.S. 4694



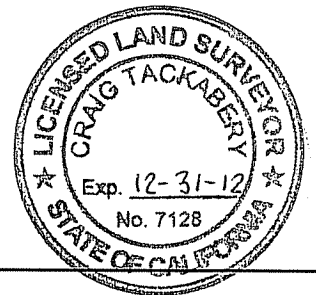
COUNTY SURVEYOR'S STATEMENT

This Corner Record was received JANUARY 7, 2011

and examined and filed FEBRUARY 8, 2011

Signed [Signature] P.L.S. or R.C.E. No. 7128

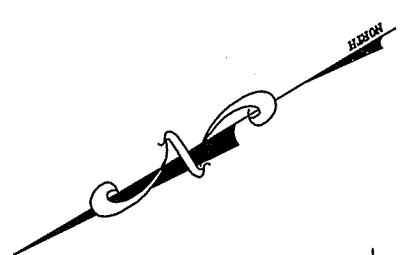
Title COUNTY SURVEYOR



County Surveyor's Comment _____

BASIS OF BEARING

THE BASIS OF BEARING FOR THIS SURVEY IS BETWEEN FOUND STREET MONUMENTS ON E. STRAWBERRY DRIVE PER 14 P.M. 55

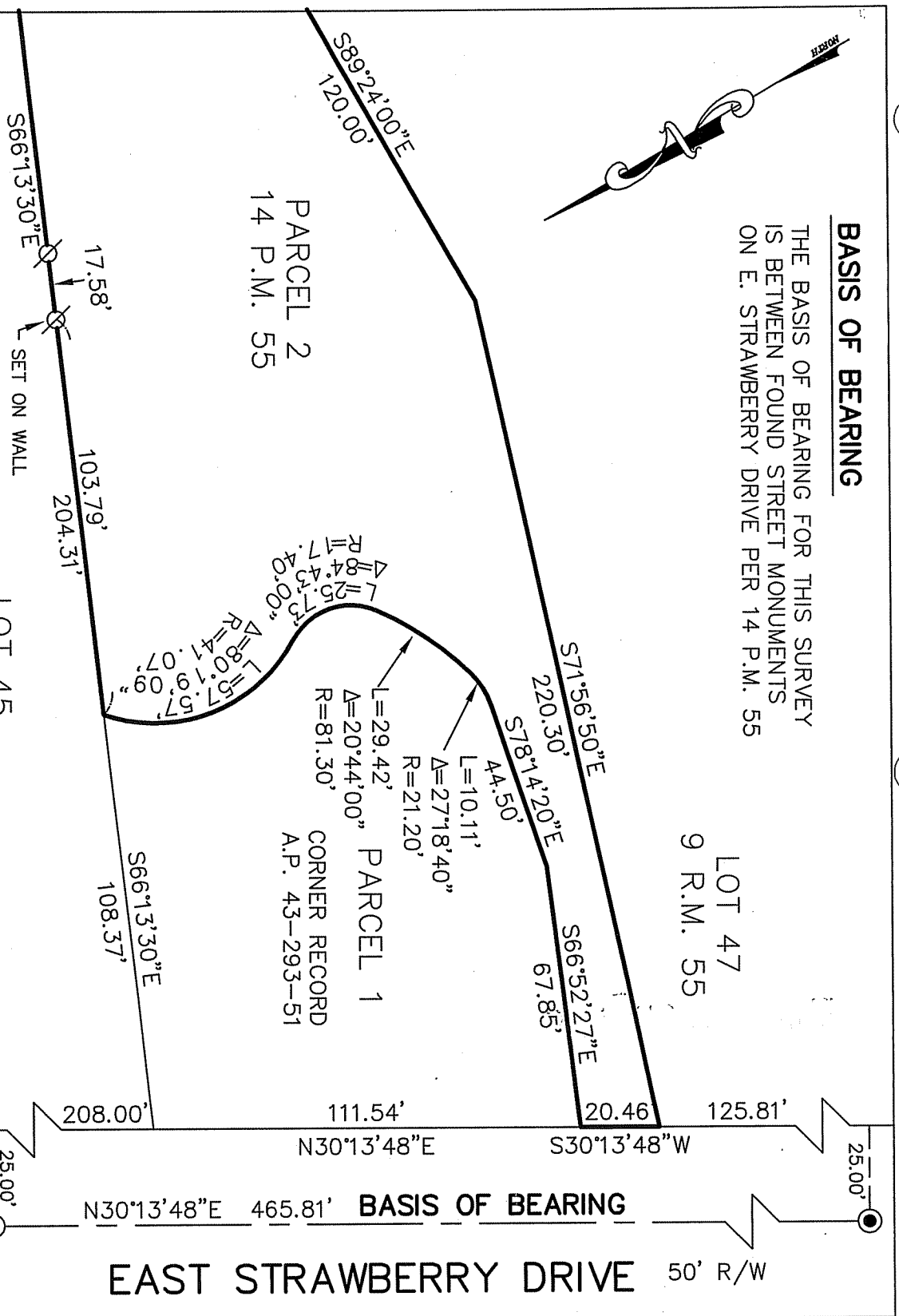


PARCEL 2
14 P.M. 55

LOT 45
9 R.M. 55

LOT 47
9 R.M. 55

PARCEL 1
CORNER RECORD
A.P. 43-293-51



- LEGEND**
- FOUND STREET MONUMENT
 - ⊗ SET NAIL & TAG, L.S. 4694



<p>CORNER RECORD PARCEL 2, 14 P.M. 55 MARIN COUNTY CALIFORNIA</p>	
<p>SCALE: 1" = 40' DATE: 12/30/10</p>	<p>LAWRENCE P. DOYLE LAND SURVEYOR/CIVIL ENGINEER 100 HELENS LANE MILL VALLEY CA 94941 (415-388-9585)</p>
<p>DRAWN BY: SHEET 2 OF 2</p>	<p>DRAWING NO. 2077-10</p>