

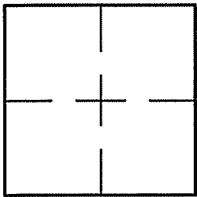
CORNER RECORD

Document Number A.P. 043-293-55

City of MILL VALLEY

County of MARIN, California

Brief Legal Description PARCEL 1 PER 21 P.M. 26



CORNER TYPE COORDINATES (Optional)

Government Corner Control

Meander Property

Rancho Other

Date of Survey 4/13/2010

N. _____
 E. _____
 Zone _____ NAD27 NAD83
 NAD83 Epoch _____
 Elev. _____
 Vert. Datum: NGVD29 NAVD88
 Meas. Units: Metric Imperial

Corner- Left as found Found and tagged Established Reestablished Rebuilt

Identification and type of corner found: Evidence used to identify or procedure used to establish or reestablish the corner:
REESTABLISHED PARCEL 1 AS SHOWN ON 21 P.M. 26 AND AS SHOWN ON SHEET 2.

A description of the physical condition of the monument as found and as set or reset: SEE SHEET 2.

SURVEYOR'S STATEMENT

This Corner Record was prepared by me or under my direction in conformance with

the Land Surveyor's Act on APRIL 15, 2010

Signed Laurence P Doyle P.L.S. or R.C.E. No. P.L.S. 4694



COUNTY SURVEYOR'S STATEMENT

This Corner Record was received MAY 3, 2010

and examined and filed JUNE 29, 2010

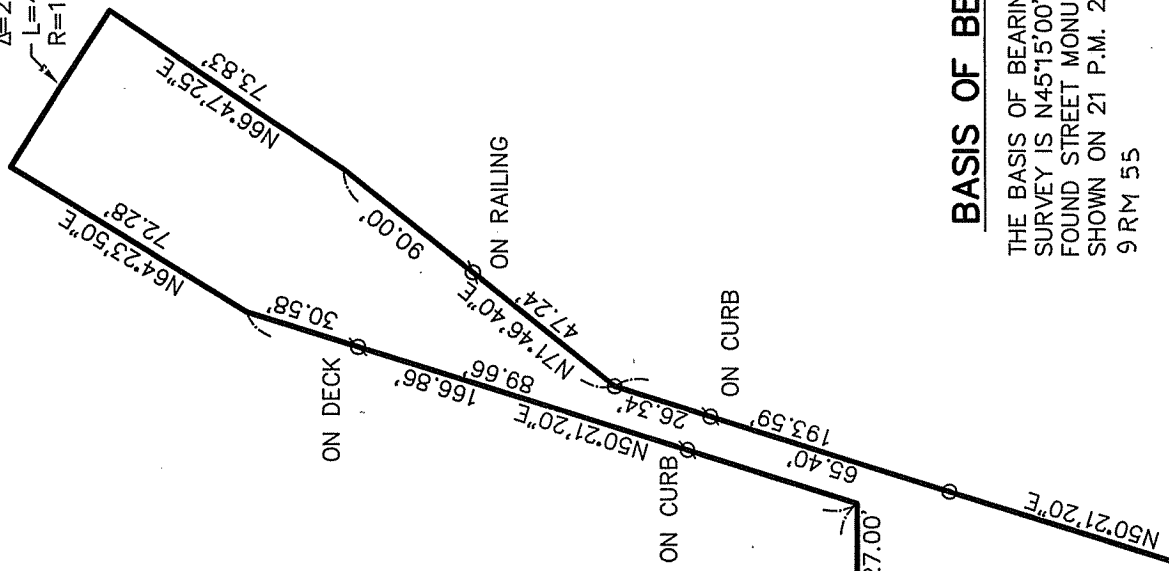
Signed [Signature] P.L.S. or R.C.E. No. 7128

Title COUNTY SURVEYOR

County Surveyor's Comment _____



$\Delta=2'23.33"$
 $L=48.02'$
 $R=1150.00'$



BASIS OF BEARING

THE BASIS OF BEARING FOR THIS SURVEY IS N45°15'00"W BETWEEN FOUND STREET MONUMENTS AS SHOWN ON 21 P.M. 26 AND 9 RM 55



LEGEND

- FOUND STREET MONUMENT PER 21 P.M. 26
- ∅ SET NAIL/TAG L.S. 4694
- SET PIPE/PLUG L.S. 4694
- SET HUB/TAG L.S. 4694
- FOUND PIPE/TAG R.E. 8181

CORNER RECORD	
PARCEL 1 PER 21 P.M. 26	
MILL VALLEY MARIN COUNTY	CALIFORNIA
SCALE: 1"= 50'	DRAWN BY:
DATE: 4/15/10	SHEET 2 OF 2
LAWRENCE P. DOYLE	
LAND SURVEYOR/CIVIL ENGINEER	
100 HELENS LANE MILL VALLEY CA 94941 (415-388-9585)	
DRAWING NO. 2005	

PARCEL 1
21 P.M. 26

PARCEL 2
21 P.M. 26

DRIVE

STRAWBERRY
50' R/W

EAST

N44°45'00"E
25.00'

Δ=17°46'56"
L=69.83' R=225.00'

● BASIS OF BEARING
N45°15'00"W
251.38'
9 RM 55