

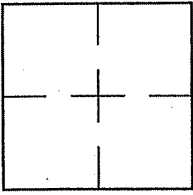
CORNER RECORD

Document Number A.P. 043-293-52

City of MILL VALLEY

County of MARIN, California

Brief Legal Description PARCEL 2 PER 14 P.M. 55



CORNER TYPE COORDINATES (Optional)

Government Corner Control

Meander Property

Rancho Other

Date of Survey 5/2/12

N. _____
 E. _____
 Zone _____ NAD27 NAD83
 NAD83 Epoch _____
 Elev. _____
 Vert. Datum: NGVD29 NAVD88
 Meas. Units: Metric Imperial

Corner: Left as found Found and tagged Established Reestablished Rebuilt

Identification and type of corner found: Evidence used to identify or procedure used to establish or reestablish the corner:
REESTABLISHED THE NORTHERLY BOUNDARY LINE OF PARCEL 2 USING THE STREET MONUMENTS SHOWN ON
14 P.M. 55, 9 R.M. 55, A CORNER RECORD FOR A.P. 043-293-51, AND AS SHOWN ON SHEET 2.

A description of the physical condition of the monument as found and as set or reset: SEE SHEET 2.

SURVEYOR'S STATEMENT

This Corner Record was prepared by me or under my direction in conformance with
 the Land Surveyor's Act on MAY 2, 2012

Signed Lawrence P. Doyle P.L.S. or R.C.E. No. P.L.S. 4694



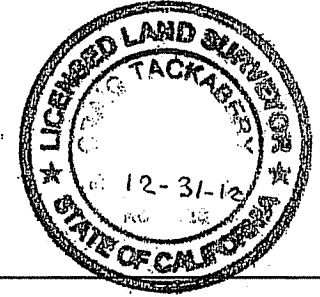
COUNTY SURVEYOR'S STATEMENT

This Corner Record was received JUNE 8, 2012

and examined and filed JULY 5, 2012

Signed [Signature] P.L.S. or R.C.E. No. 7128

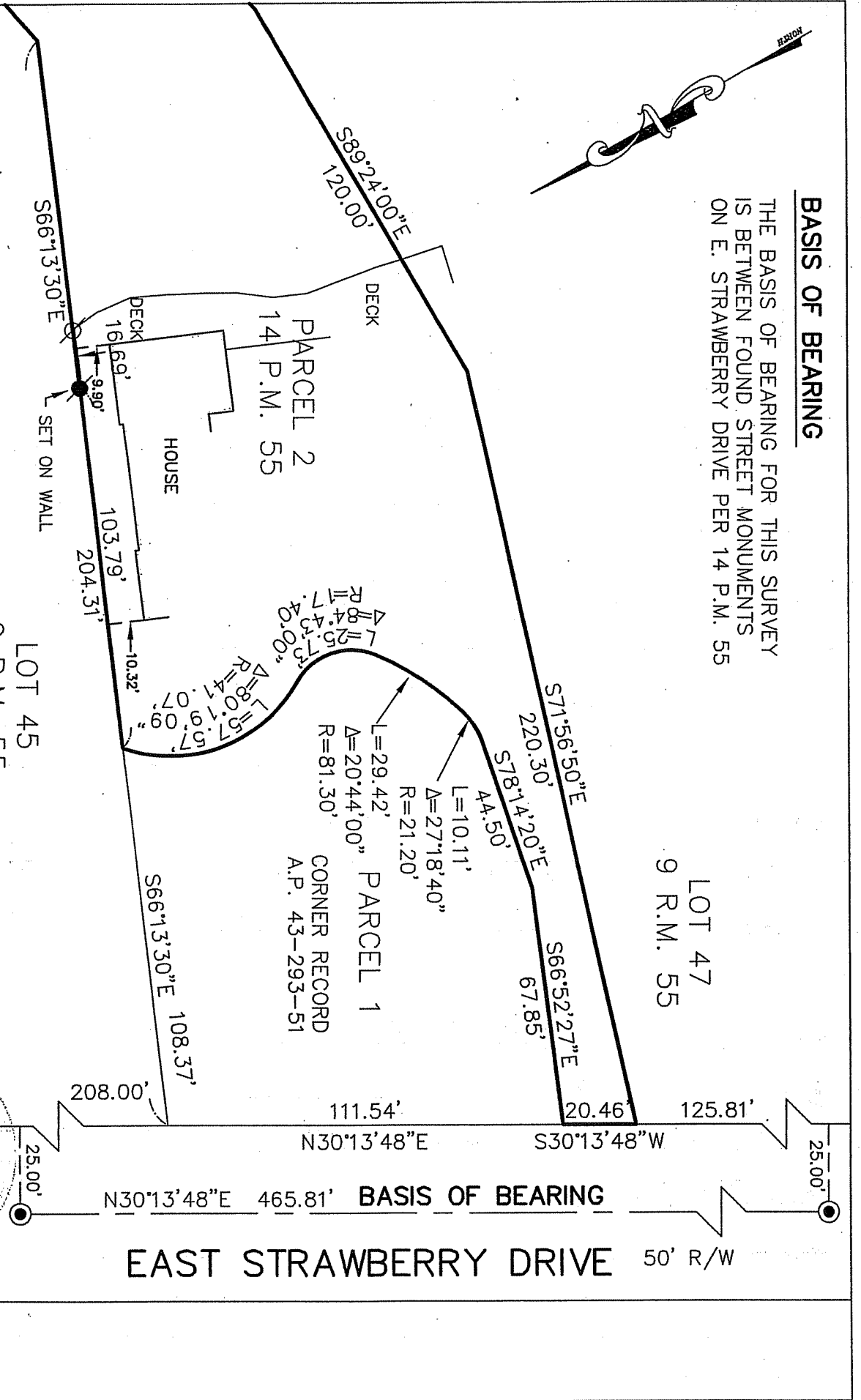
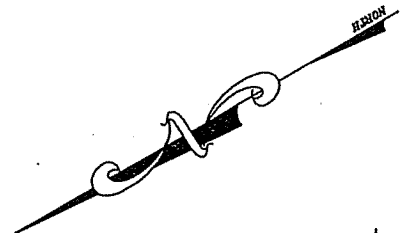
Title COUNTY SURVEYOR



County Surveyor's Comment _____

BASIS OF BEARING

THE BASIS OF BEARING FOR THIS SURVEY IS BETWEEN FOUND STREET MONUMENTS ON E. STRAWBERRY DRIVE PER 14 P.M. 55



LEGEND

- FOUND STREET MONUMENT
- FOUND NAIL & TAG, L.S. 4694
- ⊗ SET NAIL & TAG, L.S. 4694



<p>CORNER RECORD PARCEL 2, 14 P.M. 55 MARIN COUNTY CALIFORNIA</p>	
<p>SCALE: 1" = 40'</p>	<p>DATE: 5/2/12</p>
<p>LAWRENCE P. DOYLE LAND SURVEYOR/CIVIL ENGINEER 100 HELENS LANE MILL VALLEY CA 94941 (415-388-9585)</p>	<p>DRAWN BY: SHEET 2 OF 2</p>
<p>DRAWING NO. 2077-10</p>	