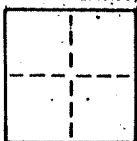


CORNER RECORD

COUNTY OF _____ T. _____ R. _____ MERIDIAN _____ CALIFORNIA

CORNER TYPE: GOVT. CORNER MEANDER RANCHO CONTROL OTHER

CORNER IDENTIFICATION — DATE OF VISIT _____ 19____



CORNER — LEFT AS FOUND FOUND AND TAGGED REESTABLISHED OBLITERATED CORNER REBUILT

PHYSICAL DESCRIPTION OF CORNER FOUND; EVIDENCE AND METHOD USED TO IDENTIFY OR REESTABLISH

Found standard County Street Monuments as shown on (9 Maps 55) and on the Kaliski Land Division (14 PM 55)

PHYSICAL DESCRIPTION OF MONUMENTS, REBUILT OR PERPETUATED

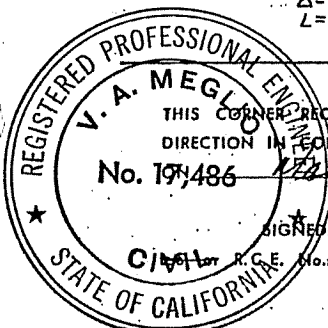
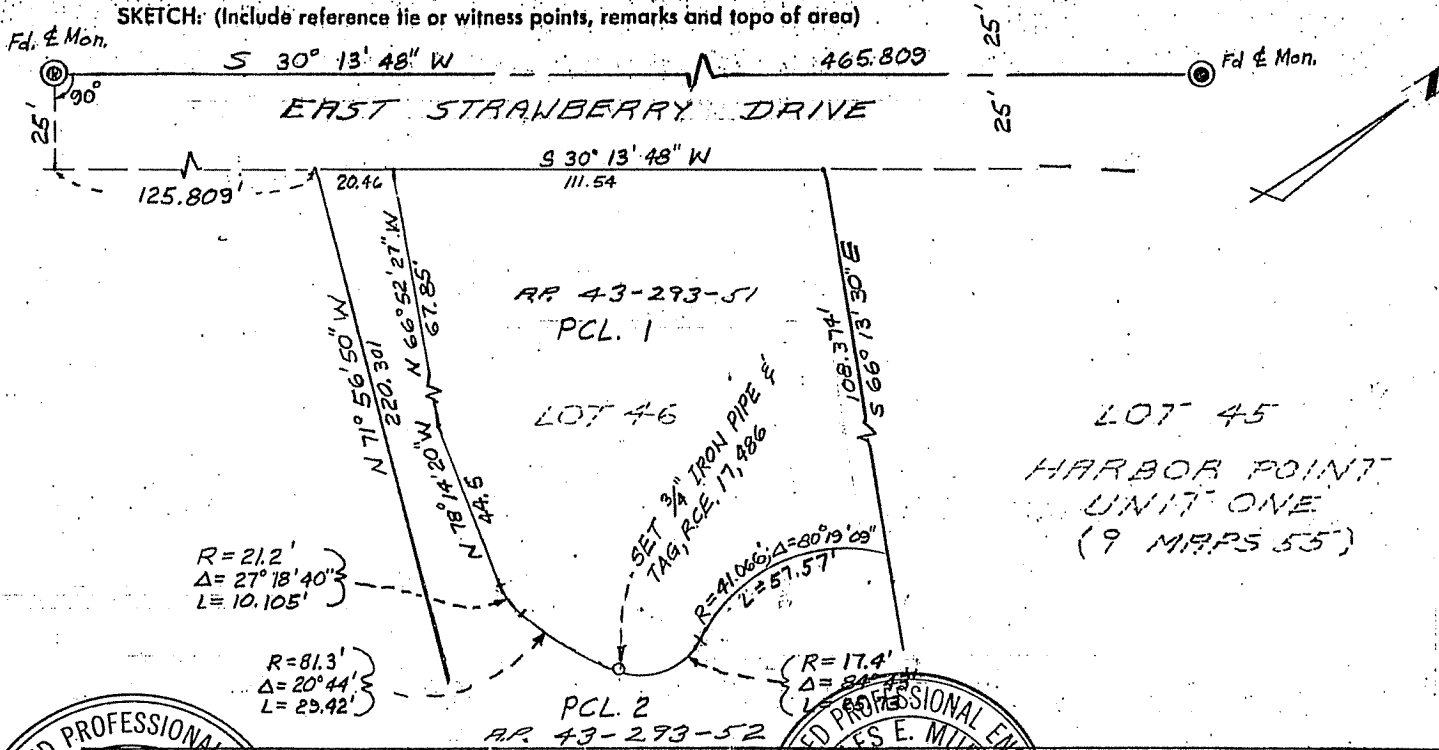
Set 3/4" iron pipes, tagged RCE 17,486 as shown

CALIFORNIA COORDINATE SYSTEM ORDER: FIRST SECOND THIRD

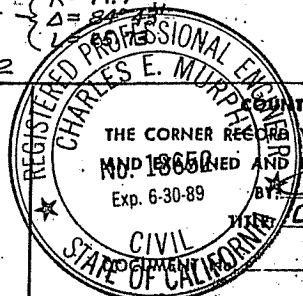
STATIONS USED: NGS (USC & GS) STATE COUNTY OTHER STATION _____ STATION _____

ZONE _____ ELEVATION _____ NORTHINGS (Y) _____ EASTINGS (X) _____

SKETCH: (Include reference tie or witness points, remarks and topo of area)



SURVEYOR'S CERTIFICATE
 THIS CORNER RECORD WAS PREPARED BY ME OR UNDER MY DIRECTION IN PERFORMANCE WITH THE LAND SURVEYORS ACT
 No. 17486 1721 6 19 87
 SIGNED: V.A. Meglio
 CIVIL ENGINEER No.: 17486 Exp 6-30-89



COUNTY SURVEYOR'S CERTIFICATE
 THE CORNER RECORD WAS RECEIVED _____ 19____
 AND FILED 7-20 19 87
 BY: Charles E. Murphy
 Dep. Co. Surv.

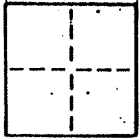
SEAL

STATEMENT ON BACK OF SHEET

YES NO

CORNER RECORD

COUNTY OF _____ T. _____ R. _____ MERIDIAN _____ CALIFORNIA _____
 CORNER TYPE: GOVT. CORNER MEANDER RANCHO CONTROL OTHER
 CORNER IDENTIFICATION — DATE OF VISIT _____ 19____



CORNER — LEFT AS FOUND FOUND AND TAGGED REESTABLISHED OBLITERATED CORNER REBUILT

PHYSICAL DESCRIPTION OF CORNER FOUND; EVIDENCE AND METHOD USED TO IDENTIFY OR REESTABLISH

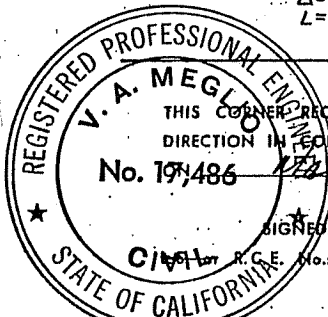
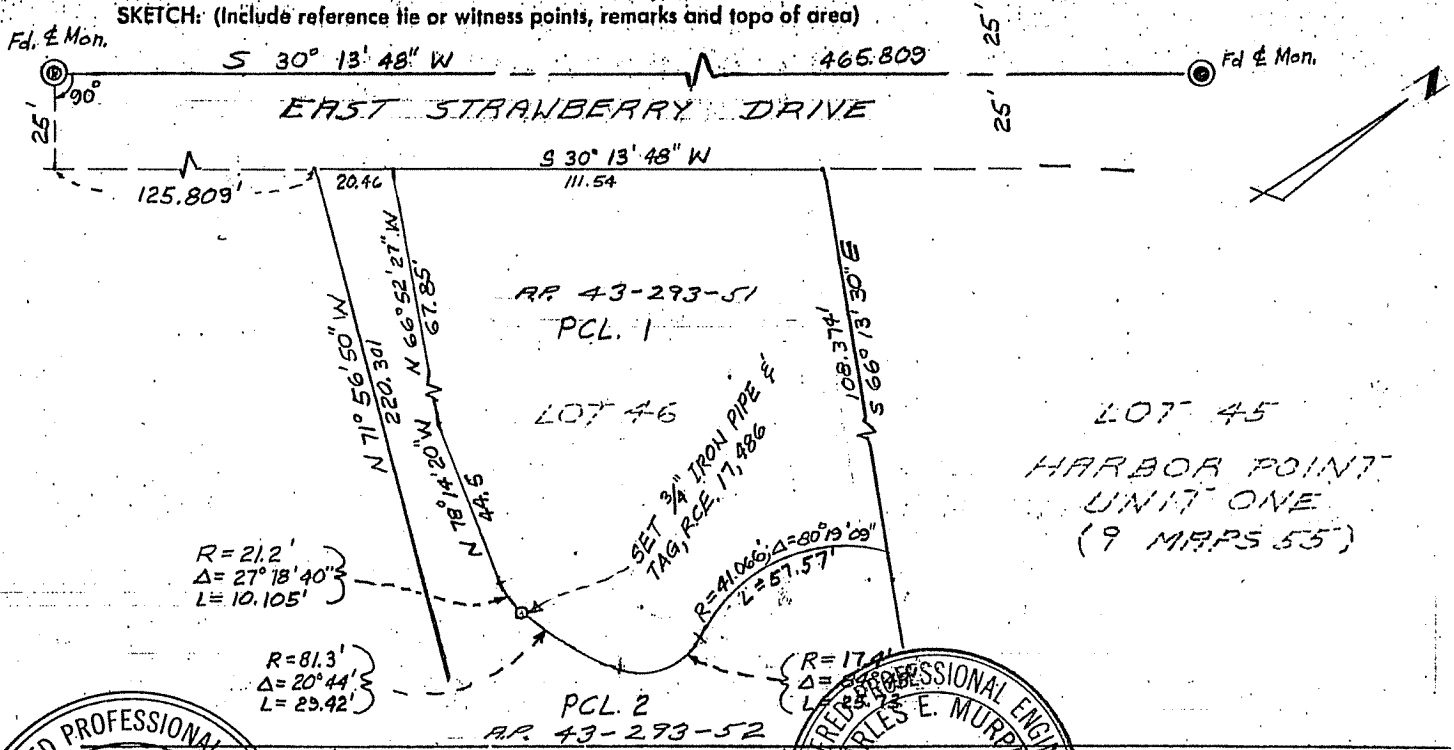
Found standard County Street Monuments as shown on (9 Maps 55) and on the Kaliski Land Division (14 PM 55)

PHYSICAL DESCRIPTION OF MONUMENTS, REBUILT OR PERPETUATED

Set 3/4" iron pipes, tagged RCE 17,486 as shown

CALIFORNIA COORDINATE SYSTEM ORDER: FIRST SECOND THIRD
 STATIONS USED: NGS (USC & GS) STATE COUNTY OTHER STATION _____ STATION _____
 ZONE _____ ELEVATION _____ NORTHINGS (Y) _____ EASTINGS (X) _____

SKETCH: (Include reference tie or witness points, remarks and topo of area)



SURVEYOR'S CERTIFICATE
 THIS CORNER RECORD WAS PREPARED BY ME OR UNDER MY DIRECTION IN PERFORMANCE WITH THE LAND SURVEYORS ACT
 No. 17486
 19 87
 SIGNED: V.A. Meglio
 CIVIL ENGINEER R.C.E. No.: 17486 Exp 6-30-89



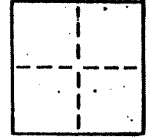
COUNTY SURVEYOR'S CERTIFICATE
 THE CORNER RECORD WAS RECEIVED _____ 19____
 No. 18952 AND EXAMINED AND FILED 7-20 1987
 EXP. 6-30-89 BY: Charles E. Murphy
 CIVIL ENGINEER
 STATE OF CALIFORNIA
 DOCUMENT # _____

CORNER RECORD

COUNTY OF _____ T. _____ R. _____ MERIDIAN CALIFORNIA

CORNER TYPE: GOVT. CORNER MEANDER RANCHO CONTROL OTHER

CORNER IDENTIFICATION — DATE OF VISIT _____ 19____



CORNER — LEFT AS FOUND FOUND AND TAGGED REESTABLISHED OBLITERATED CORNER REBUILT

PHYSICAL DESCRIPTION OF CORNER FOUND; EVIDENCE AND METHOD USED TO IDENTIFY OR REESTABLISH.

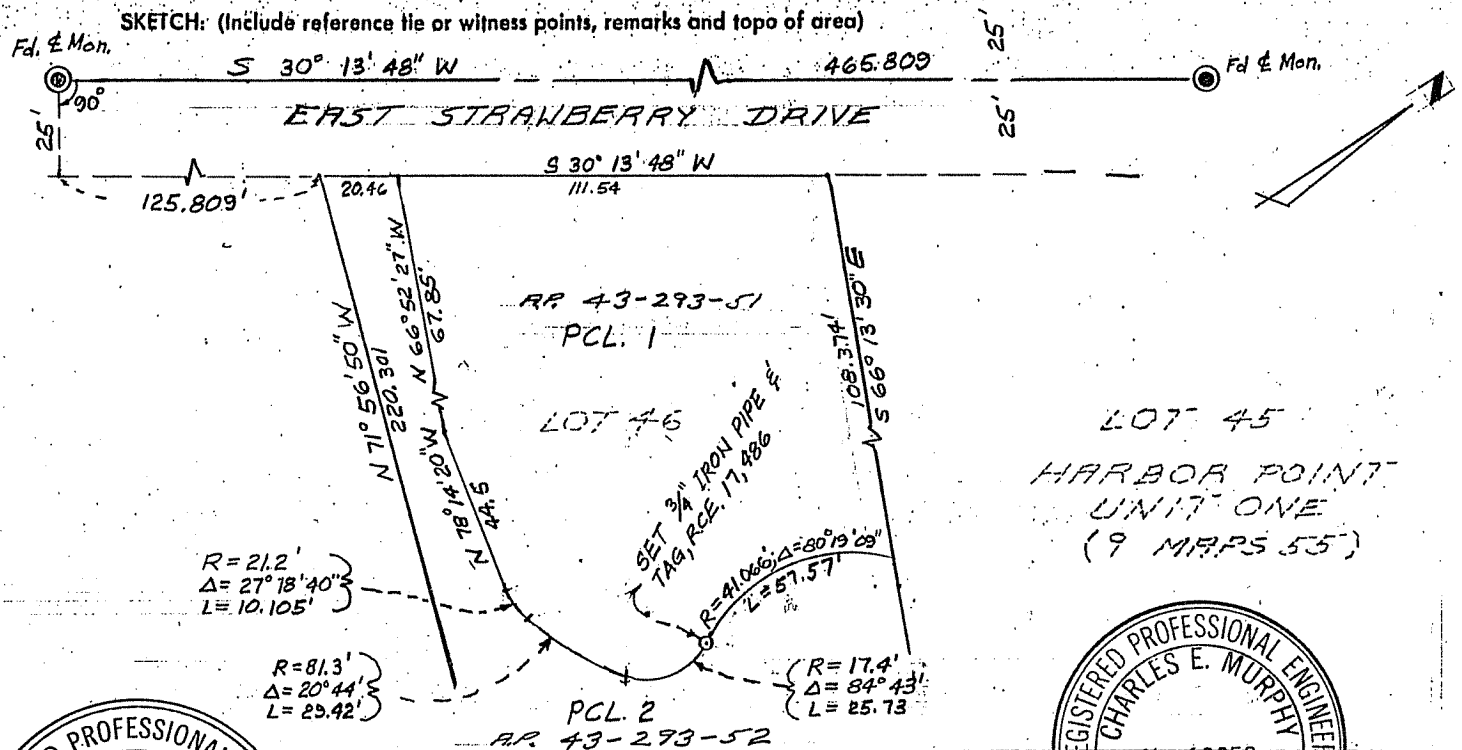
Found standard County Street Monuments as shown on (9 Maps 55) and on the Kaliski Land Division (14 PM 55)

PHYSICAL DESCRIPTION OF MONUMENTS, REBUILT OR PERPETUATED

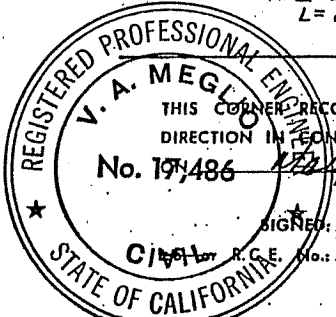
Set 3/4" iron pipes, tagged RCE 17,486 as shown

CALIFORNIA COORDINATE SYSTEM ORDER: FIRST SECOND THIRD
STATIONS USED: NGS (USC & GS) STATE COUNTY OTHER STATION _____ STATION _____
ZONE _____ ELEVATION _____ NORTHINGS (Y) _____ EASTINGS (X) _____

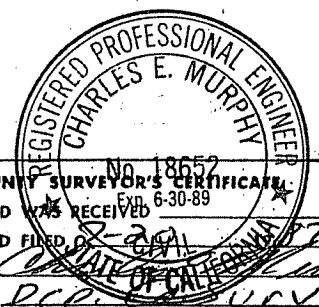
SKETCH: (Include reference tie or witness points, remarks and topo of area)



LOT 45
HARBOR POINT
UNIT ONE
(9 MAPS 55)



SURVEYOR'S CERTIFICATE
THIS CORNER RECORD WAS PREPARED BY ME OR UNDER MY DIRECTION IN CONFORMANCE WITH THE LAND SURVEYORS ACT
No. 17486 19 87
SIGNED: V. A. Meglio
CIVIL No. 17486 Exp 6-30-89



COUNTY SURVEYOR'S CERTIFICATE
No. 18652 Exp. 6-30-89
THE CORNER RECORD WAS RECEIVED AND EXAMINED AND FILED IN _____ 19____
BY: Charles E. Murphy
TITLE: REGISTERED PROFESSIONAL ENGINEER
DOCUMENT No. _____
STATEMENT ON BACK OF SHEET YES NO