

CORNER RECORD

Assessor's Parcel No. 43-284-55

Mill Valley County of Marin California

Brief Legal Description: Parcel 17A, 2 PM 68, Marin County Records

CORNER TYPE

COORDINATES (Optional)

Lot in Existing Land Division.

None

Corners - One found. Re-established remaining corner based on monuments shown on 2 PM 68.

Description of Monuments reset: See Corner Record, Page 2.

SURVEYOR'S STATEMENT

This Corner Record was prepared by me or under my direction in conformance with the Land Surveyor's Act on October 16, 2014.



Signed Dale White LS 4397

COUNTY SURVEYOR'S STATEMENT

This Corner Record was received October 20, 20 14, and examined and filed NOVEMBER 11, 20 14.

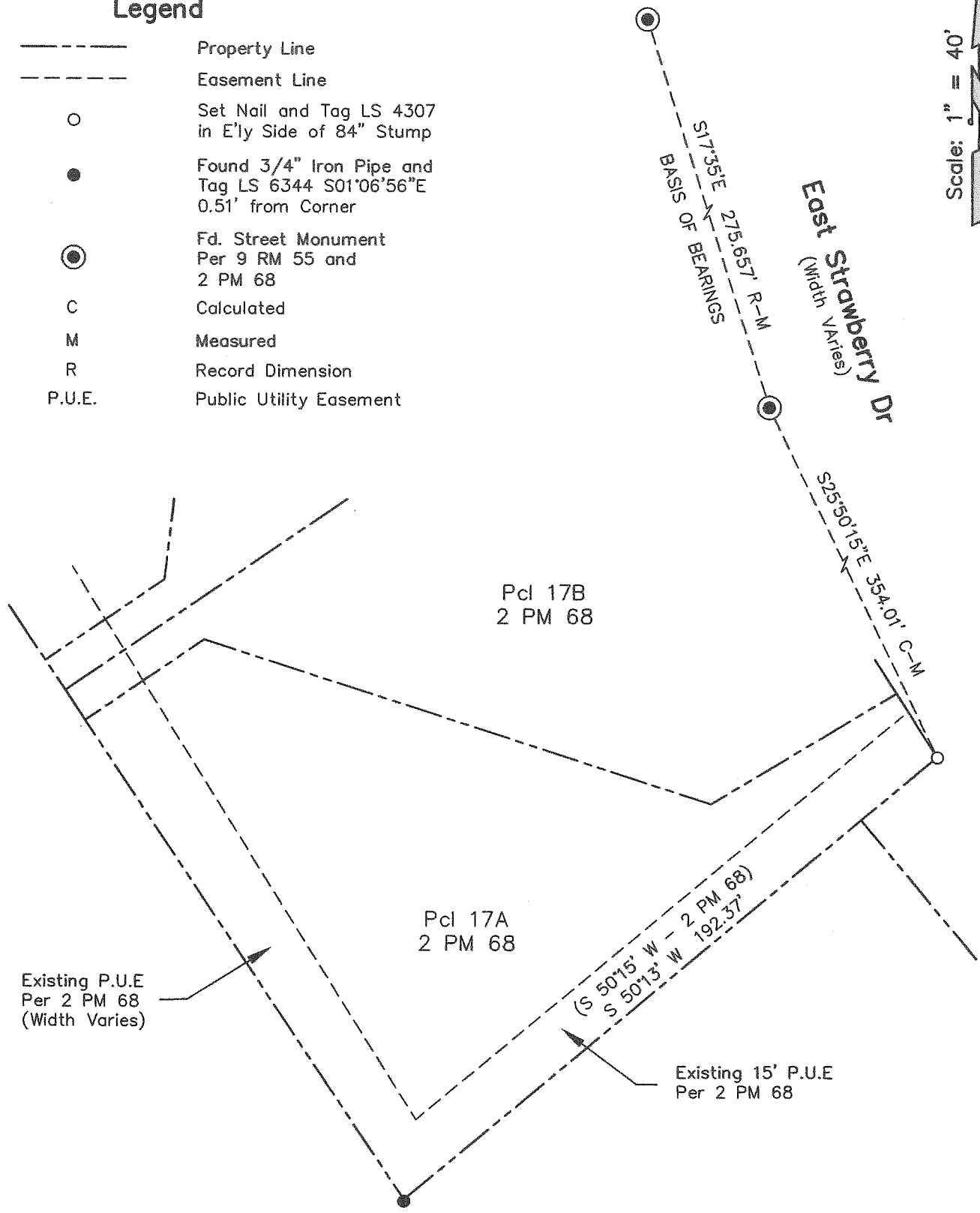
Signed Richard G. Simonitch Title DEPUTY



County Surveyor's Comments _____

Legend

- Property Line
- - - - - Easement Line
- Set Nail and Tag LS 4307
in E'ly Side of 84" Stump
- Found 3/4" Iron Pipe and
Tag LS 6344 S01°06'56"E
0.51' from Corner
- ⊙ Fd. Street Monument
Per 9 RM 55 and
2 PM 68
- C Calculated
- M Measured
- R Record Dimension
- P.U.E. Public Utility Easement



378 East Strawberry Dr
Mill Valley, CA
APN 043-284-55

Corner Record

Property Survey
Pcl 17A, 2 PM 68
Marin County Records