

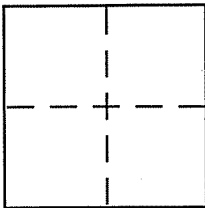
**CORNER RECORD**

Document Number 43-282-26

City of Mill Valley

County of Marin, California

Brief Legal Description Lot 34, 9 RM 55



**CORNER TYPE**

Government Corner  Control   
Meander  Property   
Rancho  Other   
Date of Survey 10-12-98

**COORDINATES (Optional)**

N. \_\_\_\_\_  
E. \_\_\_\_\_  
Zone \_\_\_\_\_ NAD27  NAD83   
NAD83 Epoch \_\_\_\_\_  
Elev. \_\_\_\_\_  
Vert. Datum: NGVD29  NAVD88   
Meas. Units: Metric  Imperial

Corner - Left as found  Found and tagged  Established  Reestablished  Rebuilt

Identification and type of corner found: Evidence used to identify or procedure used to establish or reestablish the corner:

SEE PAGE 2 OF 2

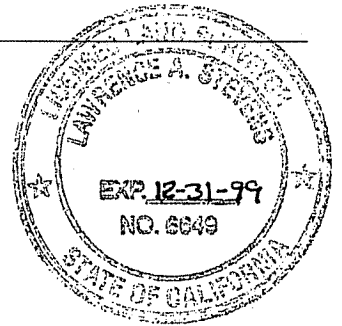
A description of the physical condition of the monument as found and as set or reset:

SEE PAGE 2 OF 2.

**SURVEYOR'S STATEMENT**

This Corner Record was prepared by me or under my direction in conformance with the Land Surveyor's Act on JANUARY 12, 1999

Signed [Signature] P.L.S. or R.C.E. No. 6649



**COUNTY SURVEYOR'S STATEMENT**

This Corner Record was received JANUARY 22, 1999

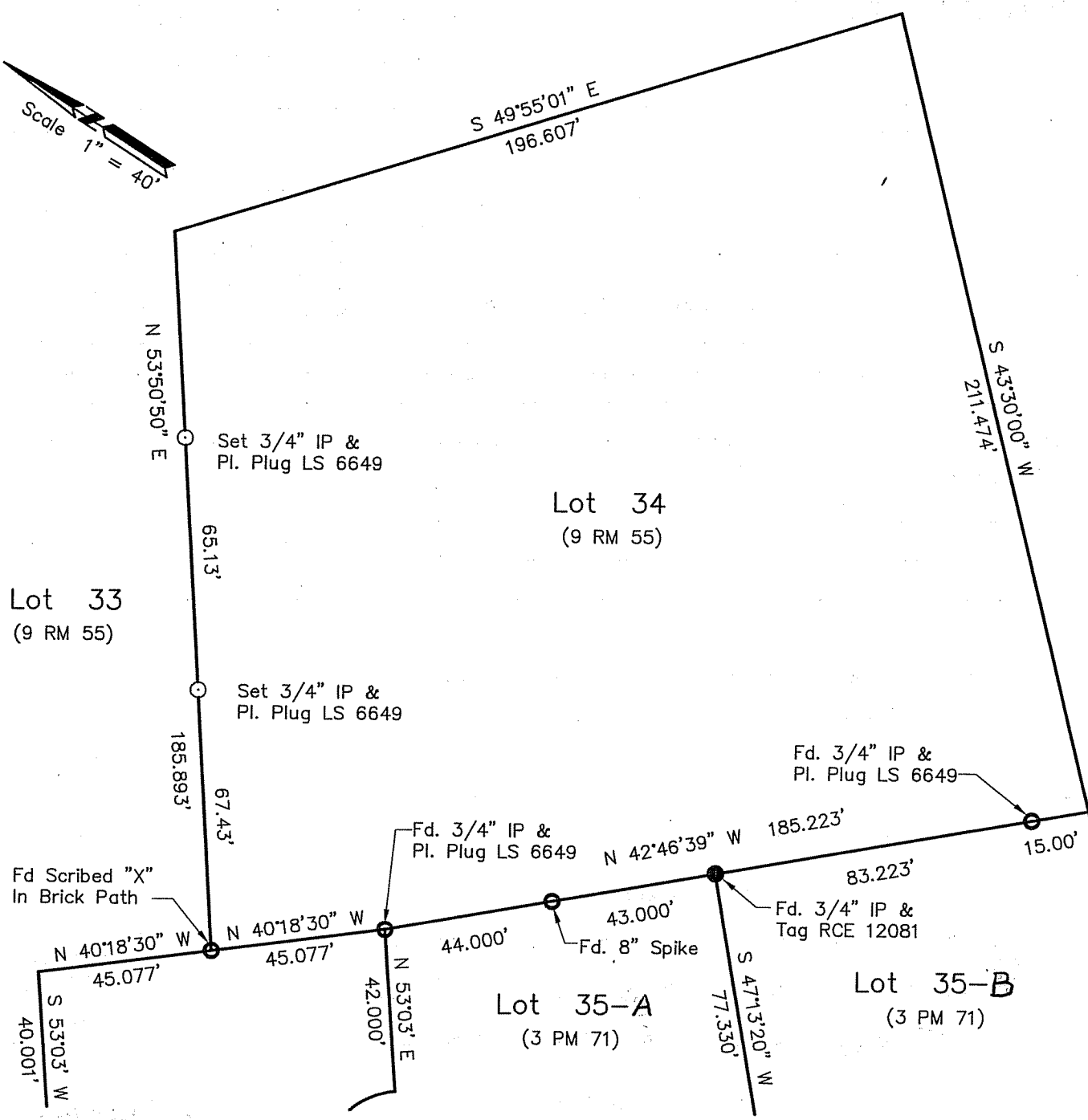
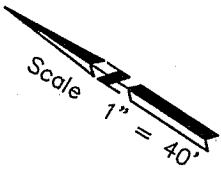
and examined and filed JANUARY 26, 1999

Signed [Signature] P.L.S. or R.C.E. No. 26450

Title DEPUTY



County Surveyor's Comment \_\_\_\_\_

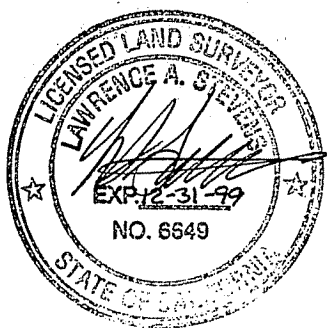


Lot 33  
(9 RM 55)

Lot 34  
(9 RM 55)

Lot 35-A  
(3 PM 71)

Lot 35-B  
(3 PM 71)



# Corner Record Plat

(Lot 34, 9 RM 55)

Mill Valley

Marin County

California

Scale: 1" = 40'

January 1999

## L.A. Stevens & Associates

Professional Land Surveyors \* (415) 382-8321  
1132 Bel Marin Keys Blvd. \* Novato, CA 94947