

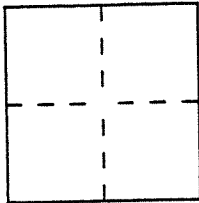
# CORNER RECORD

Document Number A.P. # 43-282-26

City of Mill Valley

County of MARIN, California

Brief Legal Description LOT 34, 9RM 55



### CORNER TYPE

Government Corner  Control   
 Meander  Property   
 Rancho  Other   
 Date of Survey 10-12-97

### COORDINATES (Optional)

N. \_\_\_\_\_  
 E. \_\_\_\_\_  
 Zone \_\_\_\_\_ Datum \_\_\_\_\_  
 Elev. \_\_\_\_\_

Corner — Left as found  Found and tagged  Established  Reestablished  Rebuilt

Identification and type of corner found: Evidence used to identify or procedure used to establish or reestablish the corner:

SEE CORNER RECORD PLAT - PAGE 2 OF 2.

A description of the physical condition of the monument as found and as set or reset:

SEE CORNER RECORD PLAT - PAGE 2 OF 2.

### SURVEYOR'S STATEMENT

This Corner Record was prepared by me or under my direction in conformance with the Land Surveyors' Act on OCTOBER 13, 1997.

Signed [Signature] L.S. No. 6649



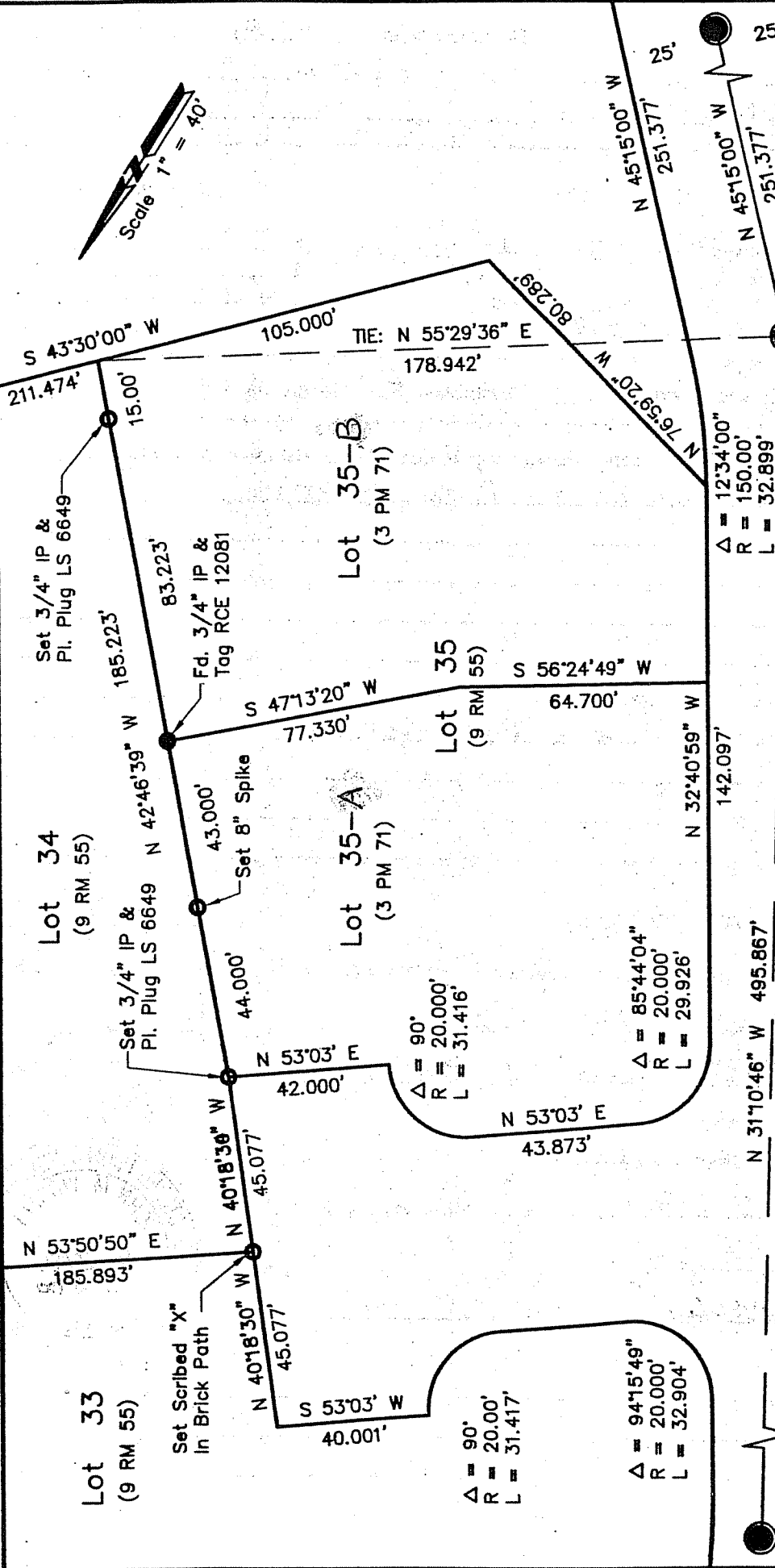
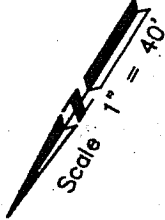
### COUNTY SURVEYOR'S STATEMENT

This Corner Record was received OCTOBER 16, 1997 and examined and filed OCTOBER 20, 1997.

Signed [Signature] Title DEPUTY

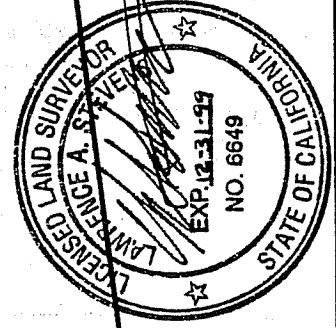


County Surveyor's Comment \_\_\_\_\_



East Strawberry Drive

Measured & Record Calculated Per 9 RM 55



CORNER RECORD PLAT

L.A. STEVENS & ASSOCIATES  
 1132 BEL MARIN KEYS BLVD  
 NOVATO CALIFORNIA  
 (415) 382-8321

10-13-99