

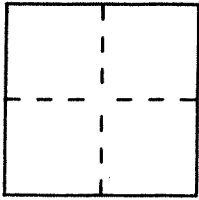
CORNER RECORD

Document Number A.P.# 43-233-04

City of MILL VALLEY

County of MARIN, California

Brief Legal Description LOT 609 7 AM 50, APN 43-233-04, #283 E-STRAWBERRY



CORNER TYPE

Government Corner Control
 Meander Property
 Rancho Other
 Date of Survey _____

COORDINATES (Optional)

N. _____
 E. _____
 Zone _____ Datum _____
 Elev. _____

Corner — Left as found Found and tagged Established Reestablished Rebuilt

Identification and type of corner found: Evidence used to identify or procedure used to establish or reestablish the corner:

See Sketch

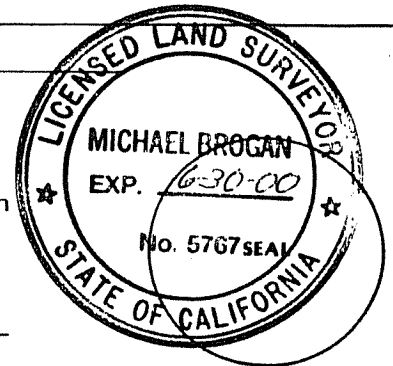
A description of the physical condition of the monument as found and as set or reset:

See Sketch

SURVEYOR'S STATEMENT

This Corner Record was prepared by me or under my direction in conformance with the Land Surveyors' Act on November 25 1996.

Signed Michael A. Brogan L.S. or R.C.E. Number LS 5767



COUNTY SURVEYOR'S STATEMENT

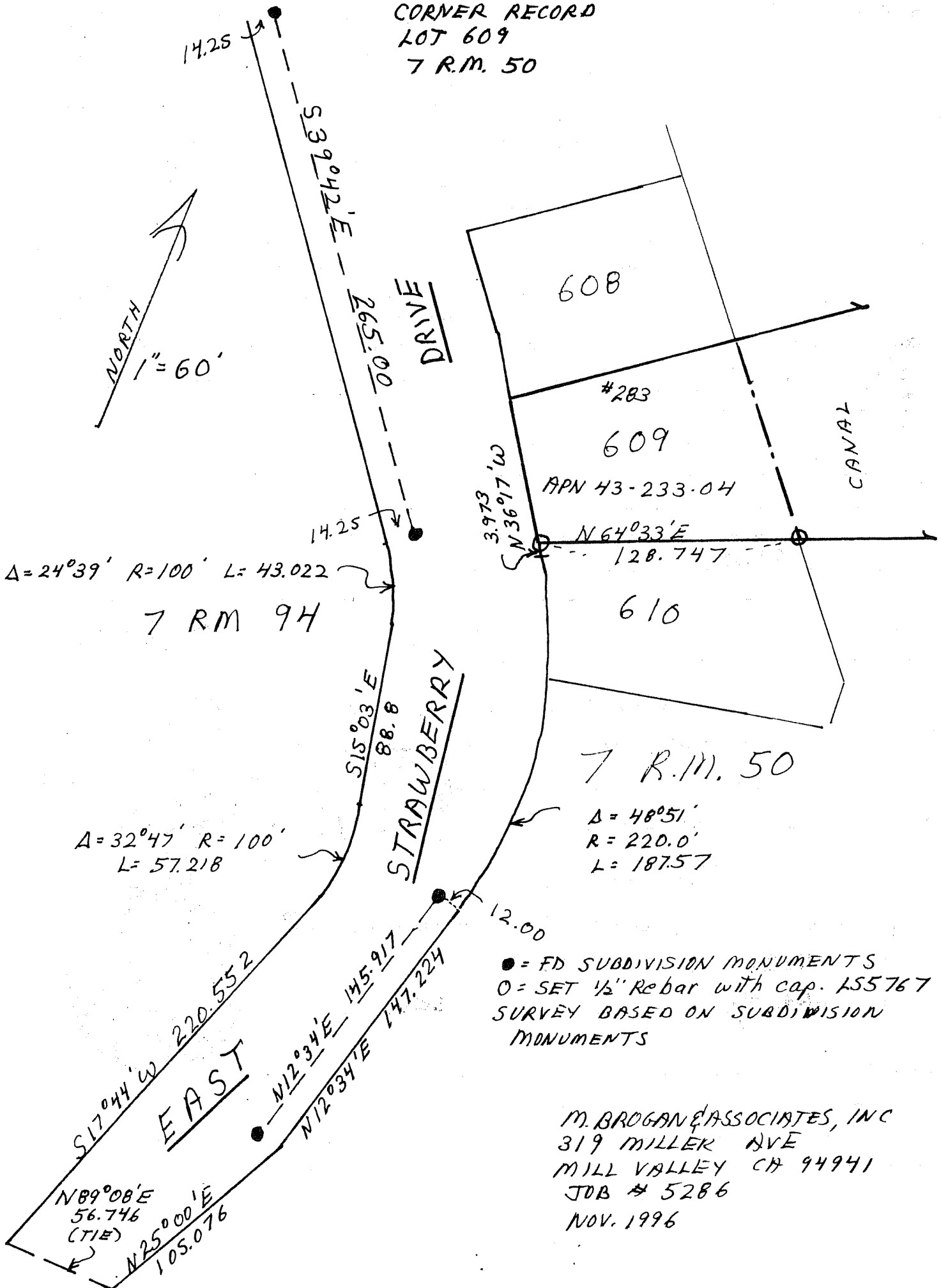
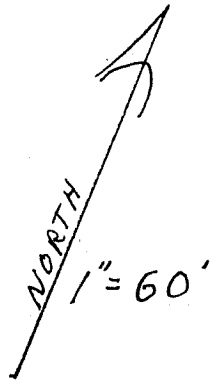
This Corner Record was received November 26 1996 and examined and filed 11-27 1996.

Signed REB Title DCS



County Surveyor's Comment _____

CORNER RECORD
 LOT 609
 7 R.M. 50



$\Delta = 24^{\circ}39'$ R=100' L= 43.022
 7 RM 9H

$A = 32^{\circ}47'$ R= 100'
 L= 57.218

$A = 48^{\circ}51'$
 R= 220.0'
 L= 187.57

● = FD SUBDIVISION MONUMENTS
 ○ = SET 1/2" Rebar with cap. 155767
 SURVEY BASED ON SUBDIVISION
 MONUMENTS

M. BROGAN & ASSOCIATES, INC
 319 MILLER AVE
 MILL VALLEY CA 94941
 JOB # 5286
 NOV. 1996