

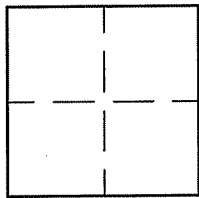
CORNER RECORD

Document Number A.P. 043-232-15

City of MILL VALLEY

County of MARIN, California

Brief Legal Description LOT 719 PER 7 R.M. 94



CORNER TYPE

COORDINATES (Optional)

Government Corner  Control   
 Meander  Property   
 Rancho  Other   
 Date of Survey 9/21/10

N. \_\_\_\_\_  
 E. \_\_\_\_\_  
 Zone \_\_\_\_\_ NAD27  NAD83   
 NAD83 Epoch \_\_\_\_\_  
 Elev. \_\_\_\_\_  
 Vert. Datum: NGVD29  NAVD88   
 Meas. Units: Metric  Imperial

Corner- Left as found  Found and tagged  Established  Reestablished  Rebuilt

Identification and type of corner found: Evidence used to identify or procedure used to establish or reestablish the corner:  
ESTABLISHED LOT 719 PER 7 R.M. 94 USING STREET MONUMENTS ON RICHARDSON DRIVE AND AS SHOWN ON SHEET 2.

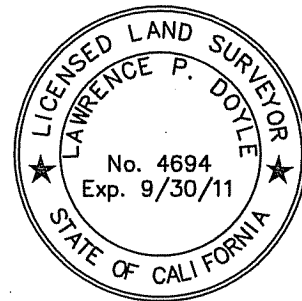
A description of the physical condition of the monument as found and as set or reset: SEE SHEET 2.

SURVEYOR'S STATEMENT

This Corner Record was prepared by me or under my direction in conformance with

the Land Surveyor's Act on SEPTEMBER 27, 2010.

Signed Lawrence P. Doyle P.L.S. or R.C.E. No. P.L.S. 4694



COUNTY SURVEYOR'S STATEMENT

This Corner Record was received FEBRUARY 22, 2011

and examined and filed APRIL 4, 2011

Signed [Signature] P.L.S. or R.C.E. No. 7128  
Title COUNTY SURVEYOR



County Surveyor's Comment \_\_\_\_\_

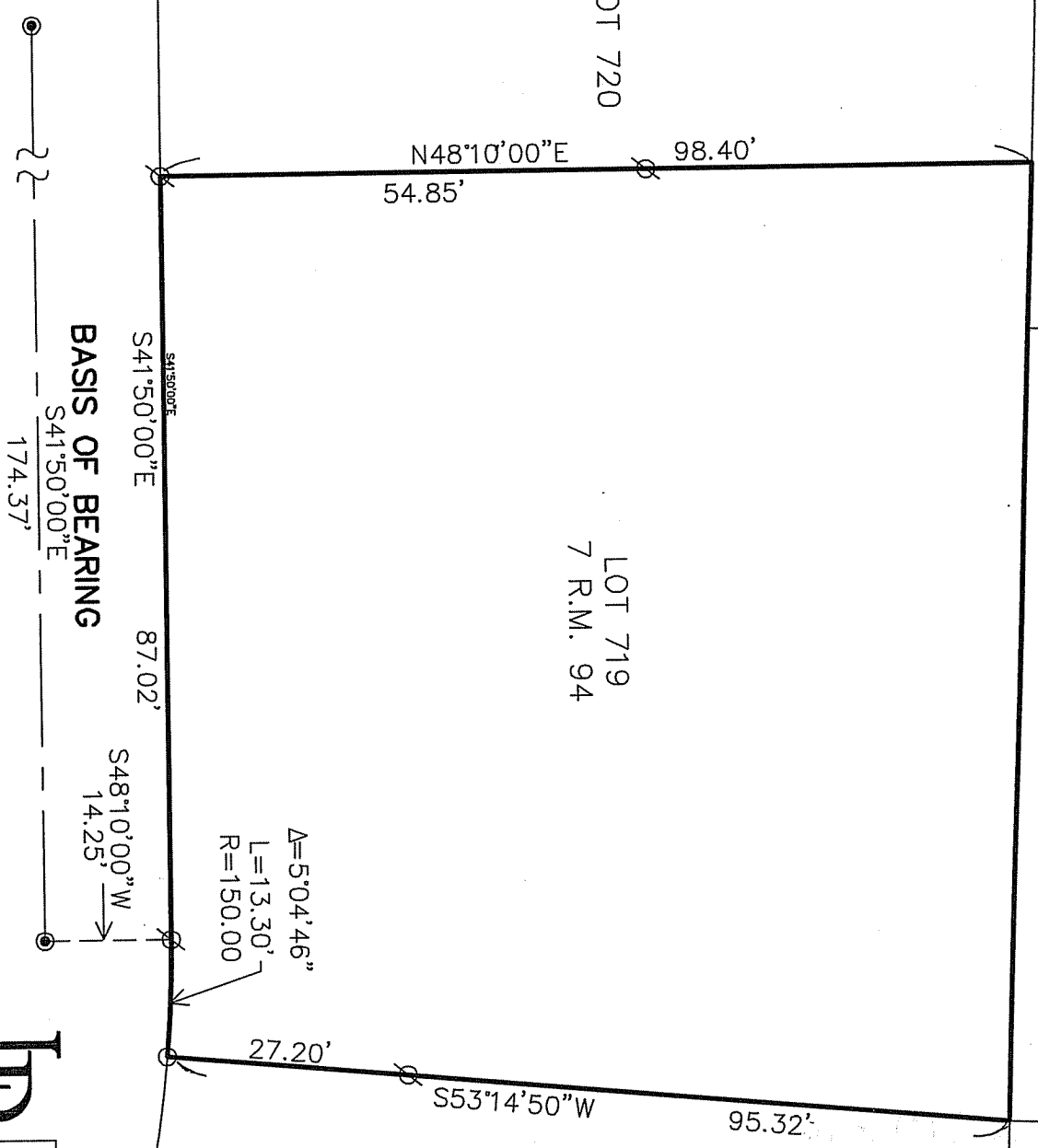
LOT 707

LOT 708

LOT 709

LOT 720

LOT 719  
7 R.M. 94



RICHARDSON DRIVE

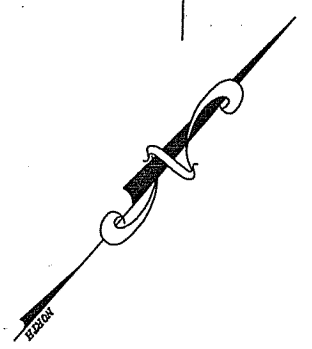
**BASIS OF BEARING**

**BASIS OF BEARING**

THE BASIS OF BEARING IS  $S41^{\circ}50'00''E$  BETWEEN TWO FOUND MONUMENTS ON RICHARDSON DRIVE PER 7 R.M. 94.

**LEGEND**

- STREET MONUMENT PER 7 R.M. 94
- SET PIPE/PLUG L.S. 4694
- ∅ SET NAIL/TAG L.S. 4694



CORNER RECORD  
 LOT 719 7 R.M. 94  
 MILL VALLEY MARIN COUNTY CALIFORNIA

SCALE: 1" = 20'  
 DATE: 9/27/10  
**LAWRENCE P. DOYLE**  
 LAND SURVEYOR/CIVIL ENGINEER

100 HELENS LANE MILL VALLEY CA 94941 (415-388-9585)

DRAWN BY: SHEET 2 OF 2  
 DRAWING NO. 1898