

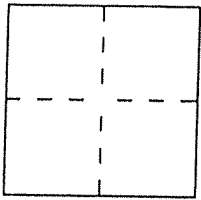
CORNER RECORD

Document Number 043-231-06

City of Mill Valley

County of Marin, California

Brief Legal Description Lot 424 of 7 RM 10, Marin County Records



CORNER TYPE

- Government Corner
- Meander
- Rancho
- Date of Survey _____
- Control
- Property
- Other

COORDINATES (Optional)

N. _____
 E. _____
 Zone _____ Datum _____
 Elev. _____

Corner — Left as found Found and tagged Established Reestablished Rebuilt

Identification and type of corner found: Evidence used to identify or procedure used to establish or reestablish the corner:
Found Standard Street Monuments per 7 RM 10

A description of the physical condition of the monument as found and as set or reset:
Set Iron bars & Caps Embossed L.S. 5290 as shown on the "Sketch Map" (over)

SURVEYOR'S STATEMENT

This Corner Record was prepared by me or under my direction in conformance with the Land Surveyors' Act on 9/11/07

Signed David Harp L.S. or R.C.E. Number LS 5290



COUNTY SURVEYOR'S STATEMENT

This Corner Record was received SEPTEMBER 13, 2007 and examined

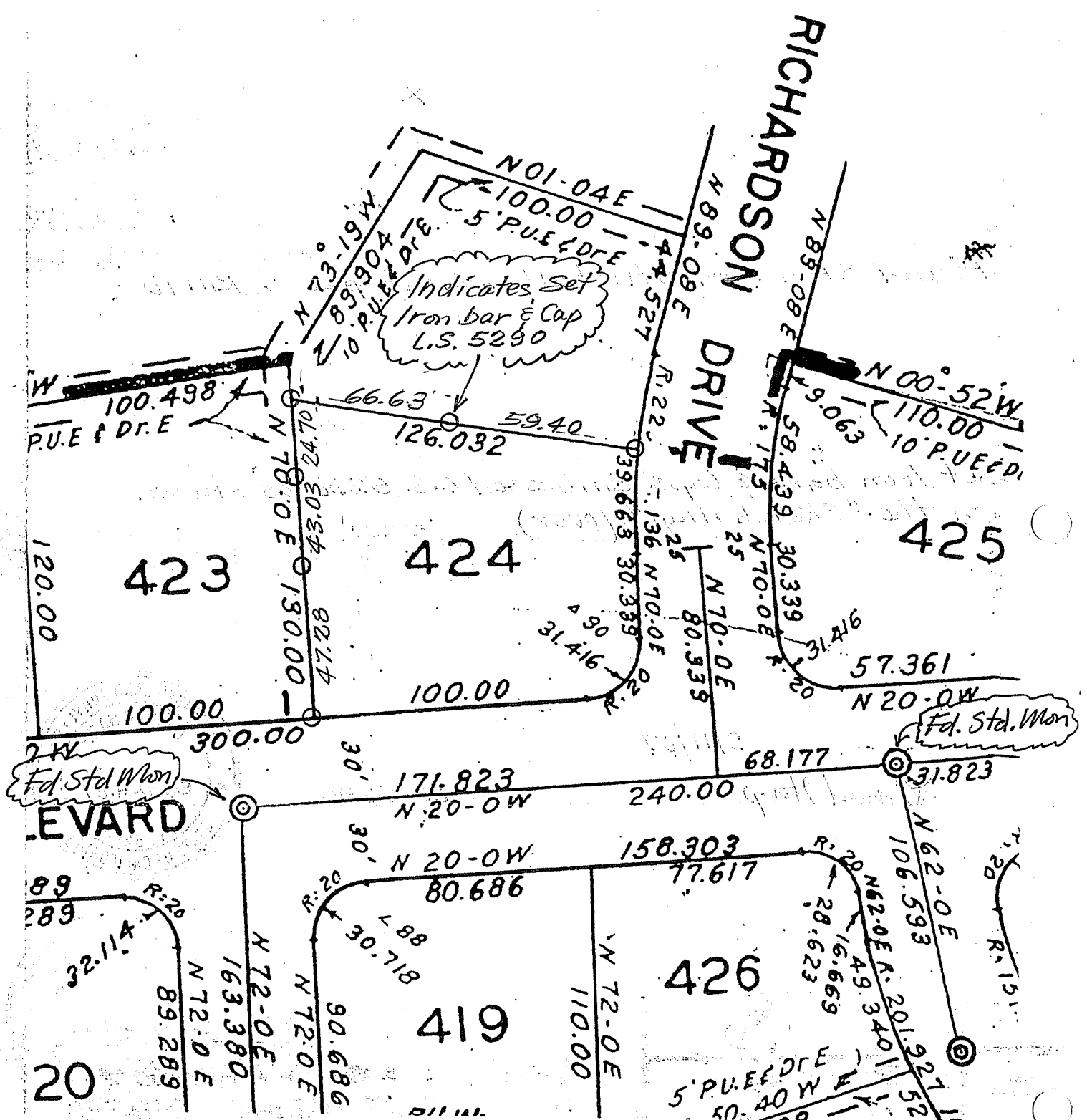
and filed OCTOBER 15, 2007

Signed _____ Title COUNTY SURVEYOR



County Surveyor's Comment _____

23-122-445
 10' P.U.E & D.R.E.
 5' P.U.E & D.R.E.
 10' P.U.E & D.R.E.



" SKETCH MAP "
 (Not to Scale)