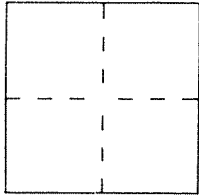


CORNER RECORD

Document Number APN 43-224-25

City of MILL VALLEY County of MARIN, California

Brief Legal Description LOT 432 7 RM 10



CORNER TYPE

COORDINATES (Optional)

Government Corner  Control   
Meander  Property   
Rancho  Other   
Date of Survey 1-28-00

N. \_\_\_\_\_  
E. \_\_\_\_\_  
Zone \_\_\_\_\_ Datum \_\_\_\_\_  
Elev. \_\_\_\_\_

Corner —  Let as found  Found and tagged  Established  Reestablished  Rebuilt

Identification and type of corner found: Evidence used to identify or procedure used to establish or reestablish the corner:  
FOUND CENTERLINE STANDARD STREET MONUMENTS AS SHOWN  
ON 7 RM 10, AND ON REVERSE.  
FOUND 3/4" I.P. # TAG LS 5102 AT REAR OF LOT, AS SHOWN ON REVERSE.

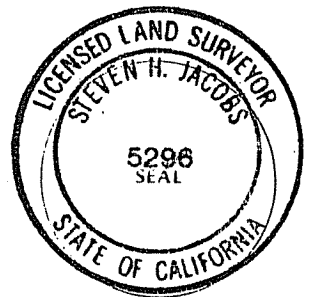
A description of the physical condition of the monument as found and as set or reset:  
SET 3/4" I.P. # TAG PLS 5296.

APN 43-224-25

SURVEYOR'S STATEMENT

This Corner Record was prepared by me or under my direction in conformance with the Land Surveyors' Act on FEBRUARY 7 2000

Signed [Signature] L.S. or R.C.E. Number PLS 5296



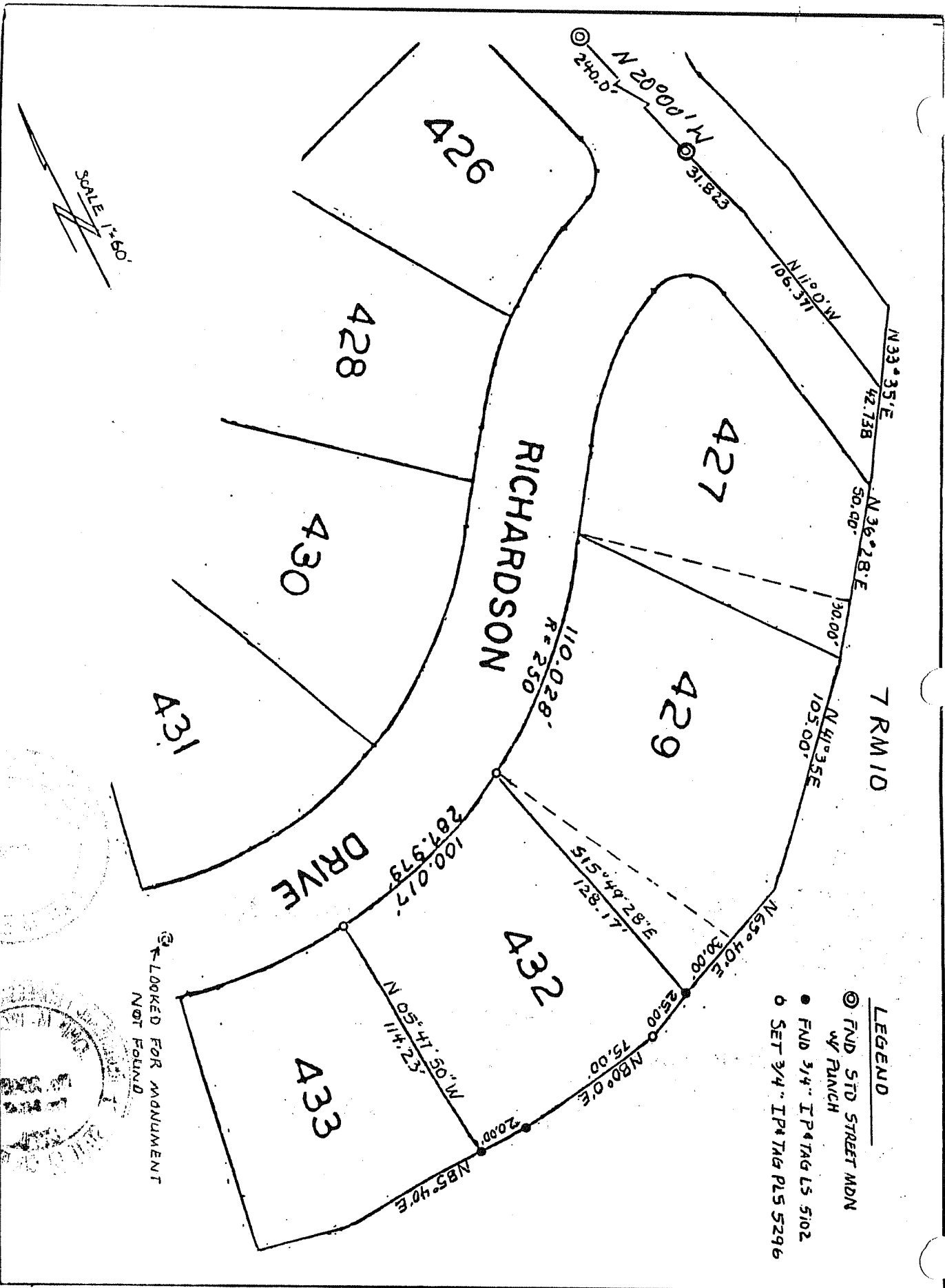
COUNTY SURVEYOR'S STATEMENT

This Corner Record was received 3-8-2000 and examined and filed 3-10-2000

Signed [Signature] Title DEPUTY



County Surveyor's Comment \_\_\_\_\_



SCALE 1"=60'

7 RM ID

**LEGEND**

- ⊙ FND STD STREET MDN W/ RANCH
- FND 3/4" IP TAG LS 5102
- SET 3/4" IP TAG PLS 5296

LOOKED FOR ADJUMENT NOT FOUND

