

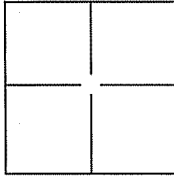
CORNER RECORD

Document Number A.P.N. 043-224-20

City of Mill Valley

County of Marin, California

Brief Legal Description Lot 618, Map of Strawberry Manor Subdivision Six, 327 Richardson Dr., 7 RM 50.



CORNER TYPE

Government Corner Control
 Meander Property
 Rancho Other

Date of Survey 14 September 2010

COORDINATES(Optional)

N. _____
 E. _____
 Zone _____ NAD27 NAD83
 NAD83 Epoch _____
 Elev. _____
 Vert. Datum: NGVD29 NADV88
 Meas. Units: Metric Imperial

Corner - Left as found Found and tagged Established Reestablished Rebuilt

Identification and type of corner found: Evidence used to identify or procedure used to establish or reestablish the corner:

Found 1/2" Rebar and Yellow Cap and Tag Scranton L.S. 5379, per Corner Record

APN 043-224-19, Found 1/2" Rebar and Yellow Cap and Tag L.S. 4402, per Corner Record

APN 043-224-19, See Exhibit "A", and Found Standard Street Monuments (2) per 7 RM 10, See Exhibit "B".

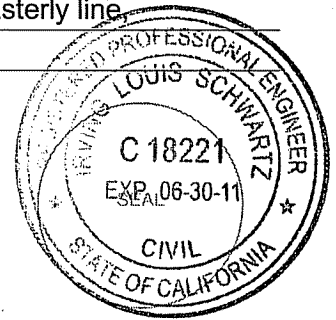
A description of the physical condition of the monument as found and as set or reset: _____

Set NE and SE corners (2 corners) on Lot 618, One Ginney Point on the westerly line and One Ginney Point on the Easterly line, One Brass Nail and Tag on top of wooden fence on westerly line and One Brass Nail and Tag on top west face of concrete retaining wall on easterly line, See Exhibit "A".

SURVEYOR'S STATEMENT

This Corner Record was prepared by me or under my direction in conformance with the Land Surveyor's Act on NOV. 8, 2010.

Signed [Signature] P.L.S. or R.C.E. No.: 18221



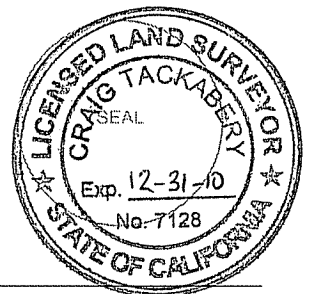
COUNTY SURVEYOR'S STATEMENT

This Corner Record was received NOVEMBER 9, 2010 and examined and filed NOVEMBER 10, 2010.

Signed [Signature] P.L.S. or R.C.E. No.: 7128

Title COUNTY SURVEYOR

County Surveyor's Comment _____



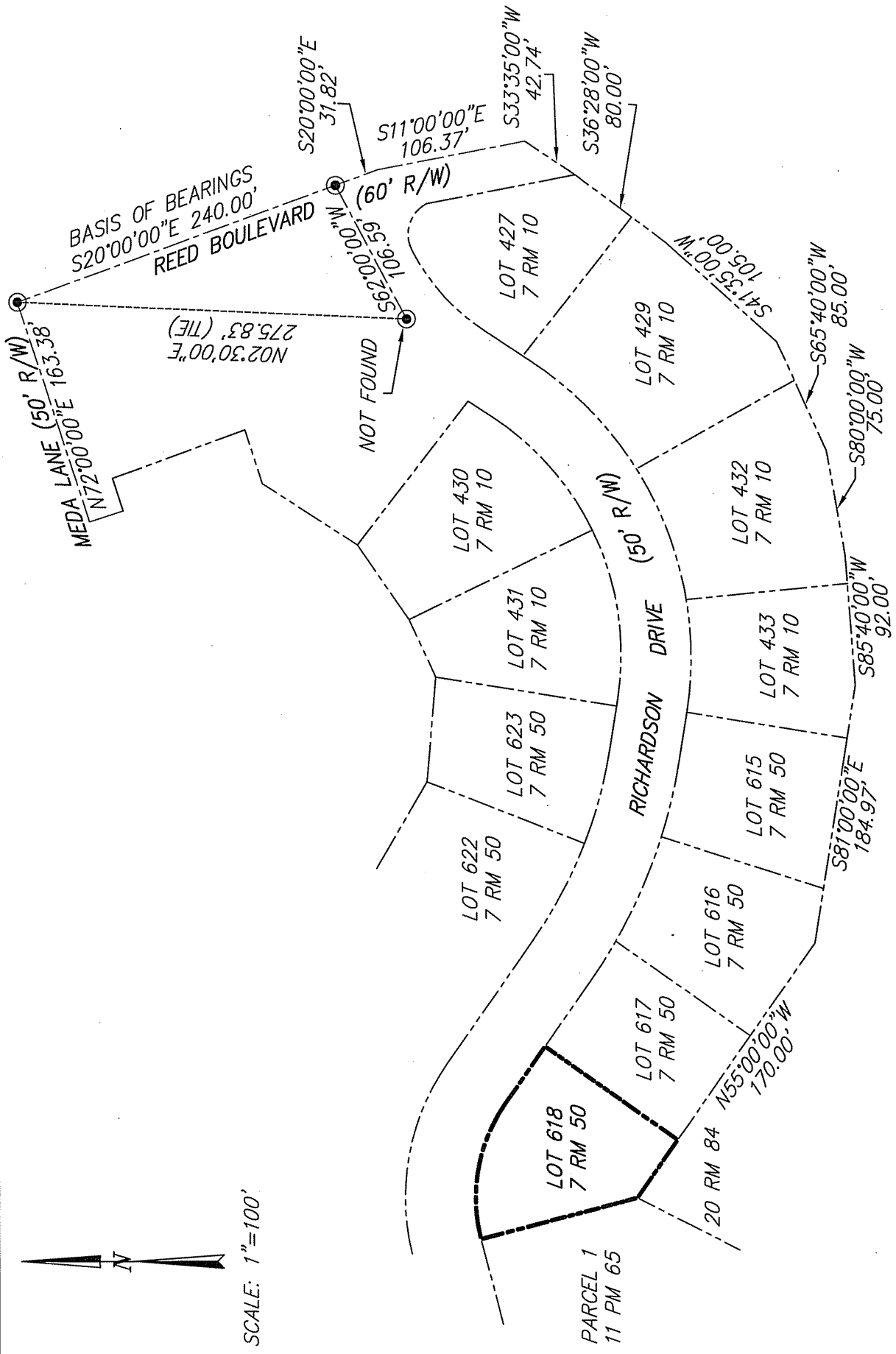


EXHIBIT "B"


ILS ASSOCIATES, INC.®
 CIVIL ENGINEERING AND LAND SURVEYING
 79 GALLI DRIVE, SUITE A NOVATO, CA 94949-5717 (415)863-9200 FAX (415)863-2763

NOTE:
 ALL DIMENSIONS AND BEARINGS
 SHOWN HEREON ARE PER 7 RM 50
 & 7 RM 10.

LEGEND
 FOUND STANDARD STREET MONUMENT
 PER 7 RM 10, EXCEPT AS NOTED
 OTHERWISE.

DATE: 10/19/2010
 FILE: 8427CR.dwg
 PAGE 3 OF 3

A.P.N. 043-224-20

