

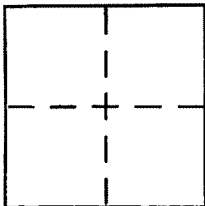
CORNER RECORD

Document Number 043-224-06

City of MILL VALLEY

County of MARIN, California

Brief Legal Description Lot 426, 7 Maps 10



CORNER TYPE

- Government Corner Control
- Meander Property
- Rancho Other
- Date of Survey _____

COORDINATES (Optional)

N. _____
 E. _____
 Zone _____ NAD27 NAD83
 NAD83 Epoch _____
 Elev. _____
 Vert. Datum: NGVD29 NAVD88
 Meas. Units: Metric Imperial

Corner - Left as found Found and tagged Established Reestablished Rebuilt

Identification and type of corner found: Evidence used to identify or procedure used to establish or reestablish the corner:

See Page 2

A description of the physical condition of the monument as found and as set or reset:

See Page 2

SURVEYOR'S STATEMENT

This Corner Record was prepared by me or under my direction in conformance with the Land Surveyor's Act on 5/28/04

Signed [Signature] P.L.S or R.C.E. No. 6784

COUNTY SURVEYOR'S STATEMENT

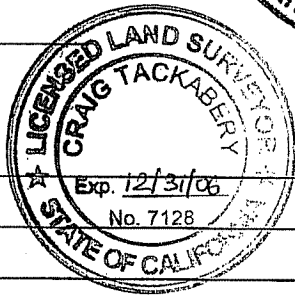
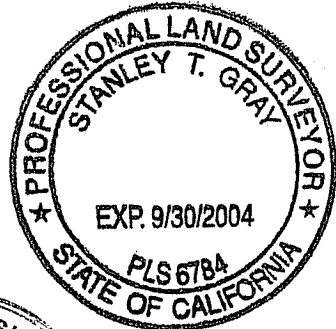
This Corner Record was received JUNE 1, 2004

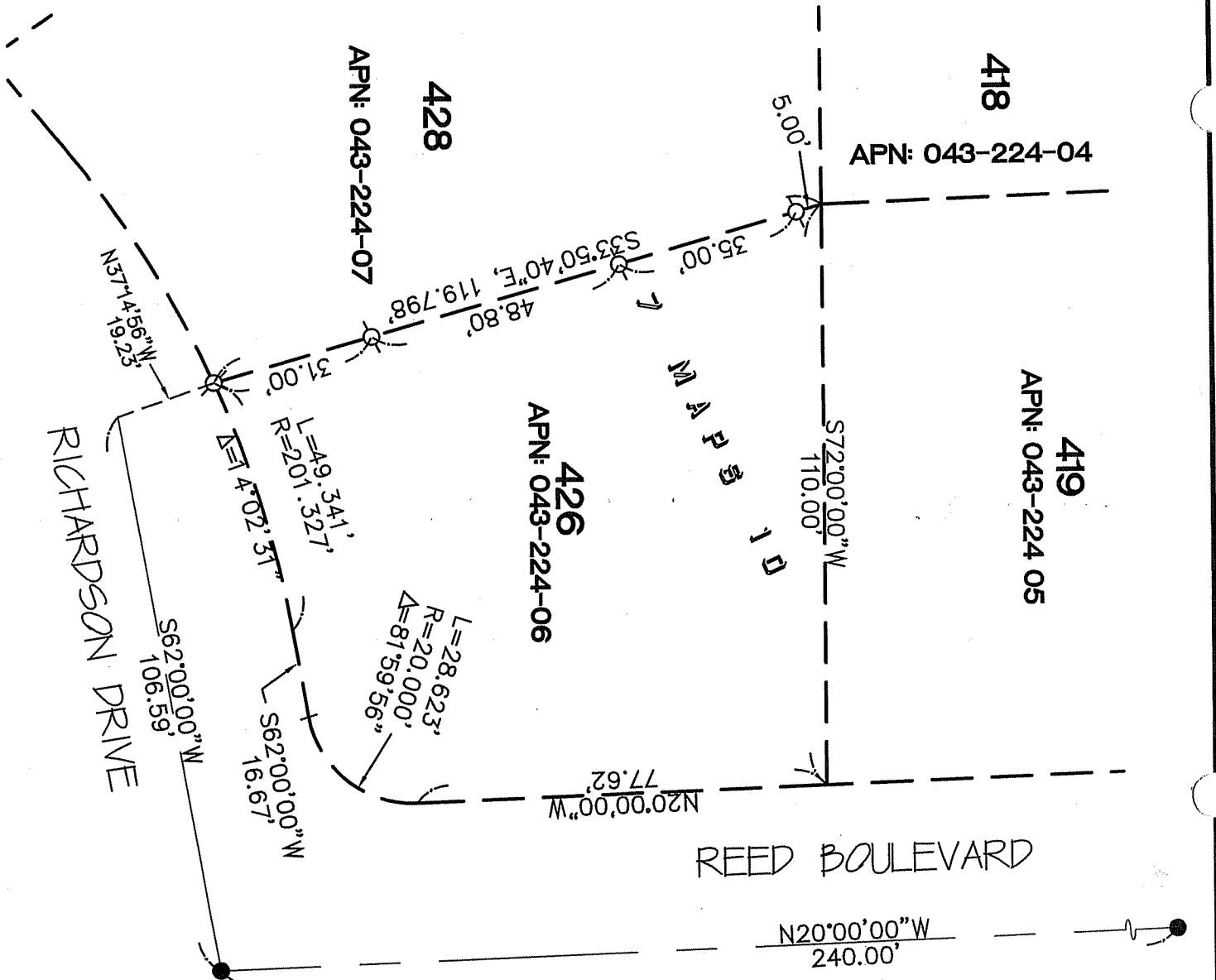
and examined and filed JUNE 22, 2004

Signed [Signature] P.L.S or R.C.E. No. 7128

Title COUNTY SURVEYOR

County Surveyor's Comment _____





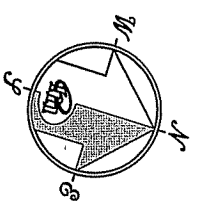
REED BOULEVARD

N20°00'00"W
240.00'

(60' WIDE)
Pole 12

John Decker

1010



REFERENCE

"MAP OF STRAWBERRY MANOR SUBDIVISION FOUR... MARIN COUNTY CALIFORNIA" FILED FOR RECORD IN VOLUME 7 OF OFFICIAL MAPS, AT PAGE 10, MARIN COUNTY RECORDS.

LEGEND

- ✕ FOUND AS NOTED
- FOUND CITY MONUMENT
- SET 5/8" REBAR WITH CAP, PLS 6784

NOTE
RECORD=MEASURED

CORNER RECORD

MERIDIAN SURVEYING
ENGINEERING, INC.

1812 UNION STREET
SAN FRANCISCO, CA 94123
(415) 440-4131
info@meridiansurvey.com

100 BRAKES LANDING RD #164
GREENBRAE, CA 94123
(415) 461-1241

04050